

tina givens
TG-F952112

1

tina g
TG-F

eileen
DRE
BODI
CUT 1

Pattern Preparation
Print page 1 and check square
test box. Print at 100%. Print all
pages. Match triangles and
refer to diagram map on Page 3.

TEST SQUARE 3"X3"

7.62cm x 7.62 cm

EILEEN DRESS
11 PAGES
TG-F952112
XS-3X

LONG THE FOLD

PLACE ALONG THE FOLD

ivens
E952112 Lorem ipsum

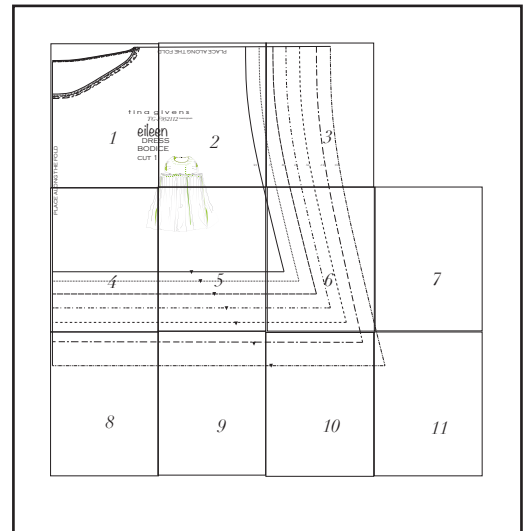
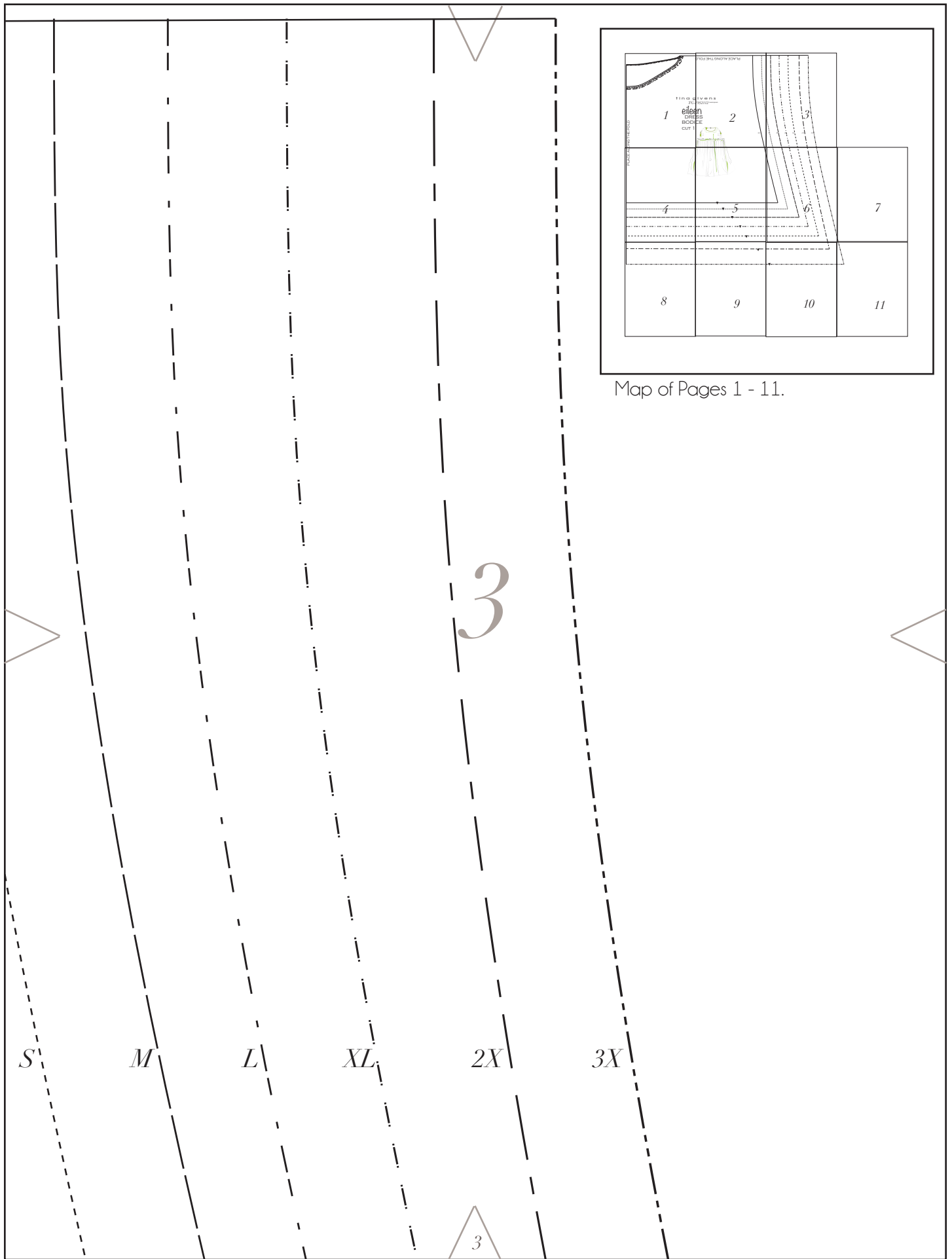
2

on
SS
CE



XS

2

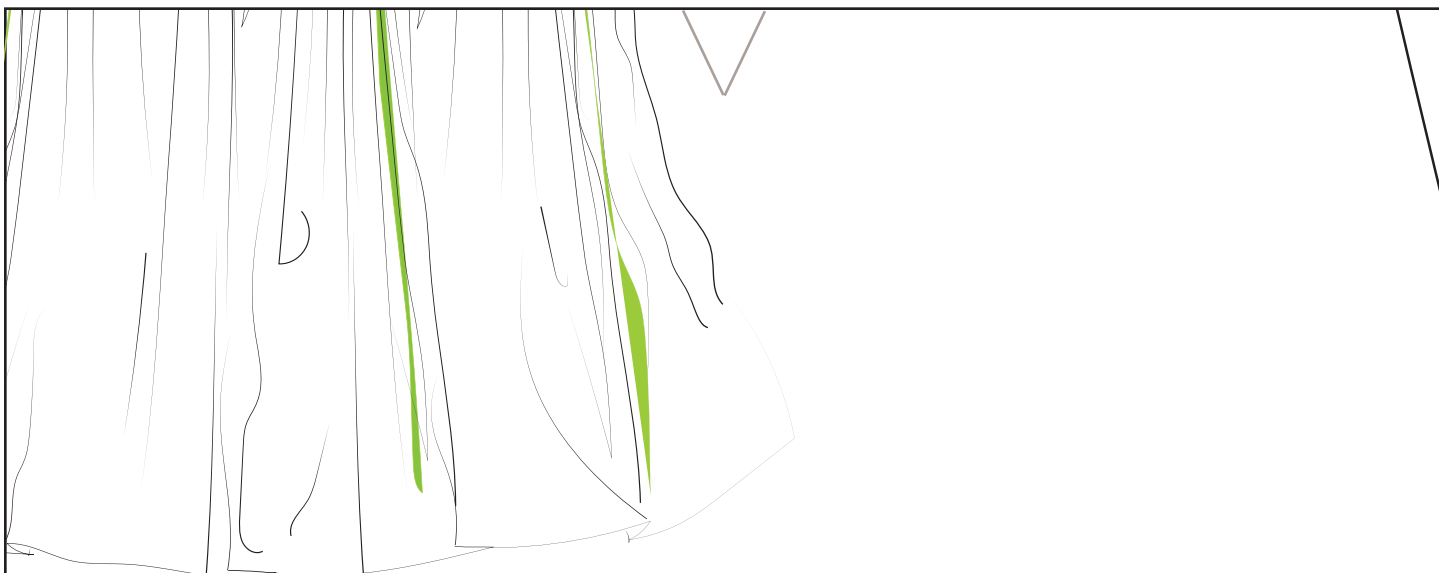


Map of Pages 1 - 11.

PLACE AL

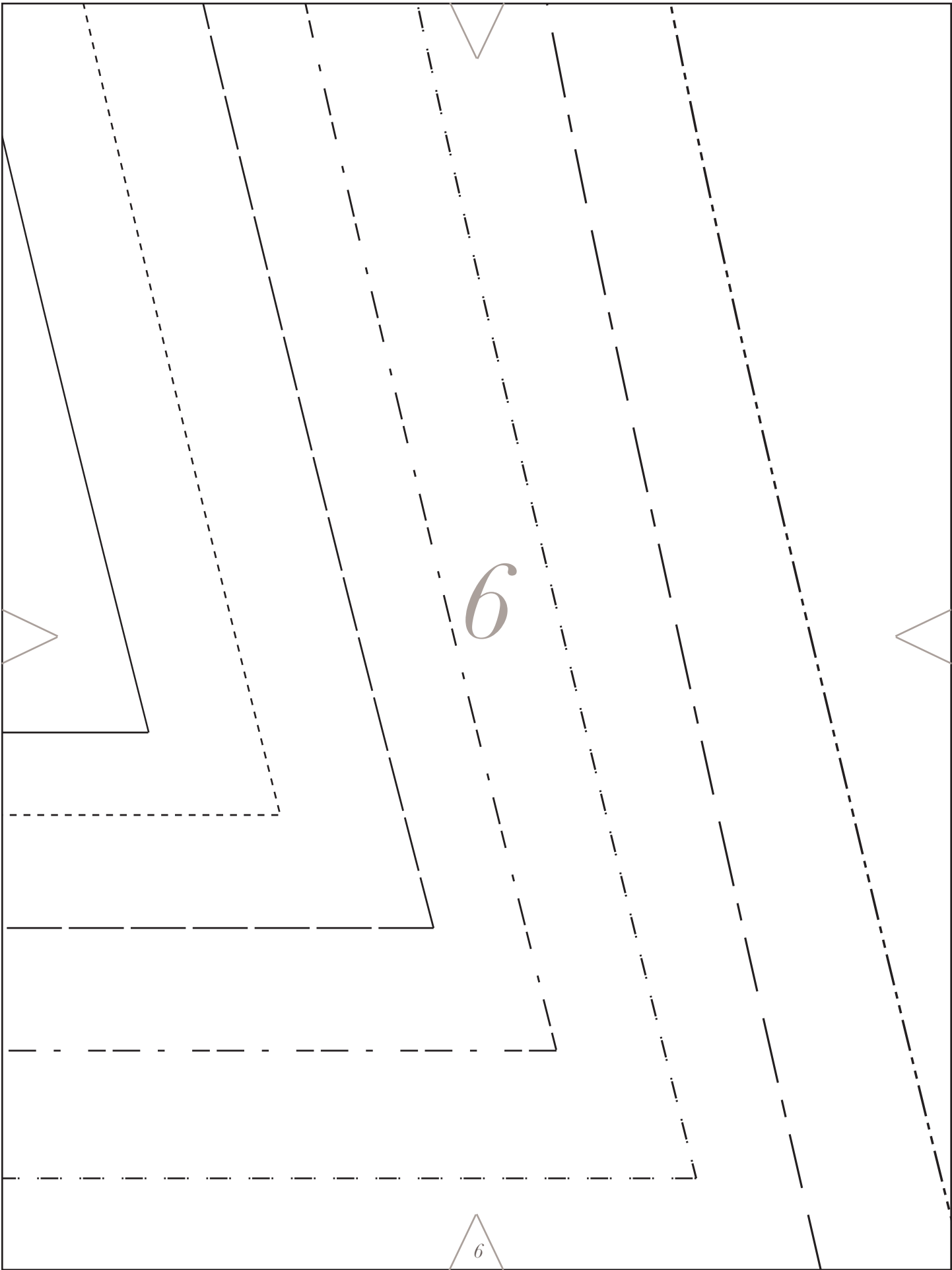
4





5





EILEEN

TG-F952112

tina givens™

| | | | | | | |
|-----|-----|-------|-------|-------|-------|----|
| XS | S | M | L | XL | 2X | 3X |
| 2-4 | 6-8 | 10-12 | 14-16 | 18-20 | 20-22 | 24 |

I AM LOVING THIS LITTLE DRESS. I MADE IT IN THE LIGHTEST COTTON VOILE IN CHARTREUSE AND LIME GREEN. YOU CAN MAKE IT IN ONE COLOR OF COURSE, INSTRUCTIONS INCLUDE DETAILS ON EITHER. PATTERN INCLUDES BODICE PATTERN, AND THEN FOLLOW THE INSTRUCTIONS FOR CUTTING OUT THE SKIRT PANELS, WHICH ARE BASICALLY RECTANGLES.

EILEEN IS UNIQUE IN ARM PLACEMENT AND GATHERS. MEASURE THE BODICE LENGTH AND THEN YOUR OWN BODY TO SEE WHERE IT SITS. IF YOU PREFER IT TO BE HIGHER OR LOWER, JUST ADJUST THE LENGTH TO YOUR PREFERENCE. WHERE EILEEN IN WARM WEATHER AS IS, WITH OR WITHOUT PANTS OR LEGGINGS. IN COOLER WEATHER A LONG SLEEVE 'T' AND PANTS OR LEGGINGS WITH BOOTS.

MATERIALS

FABRIC: LIGHT TO MID-WEIGHT FABRIC

WE USED SOPHIA WASHED VOILE FROM ROBERT KAUFMAN FABRICS, WHICH CAN BE PURCHASED IN A WIDE RANGE OF COLORS. YOU CAN USE LIGHT TO MID-WEIGHT LINEN, RAYON, VELVET, SILK, CHIFFON OR ORGANZA.

FABRIC 54" OR 44" WIDE

MATERIALS:

FABRIC :

| 44" OR 54"w ONE FABRIC | | Two Colors FABRIC A | FABRIC B |
|---------------------------|-----------------|------------------------|-----------|
| XS | 3-1/3 / 3.04M | 2-2/3Y OR 2.38M | |
| S | 3-3/8Y / 3.10M | 2-2/3Y / 2.45M | ALL SIZES |
| M | 3-7/16Y / 3.15M | 2-3/4Y / 2.45M | 1Y OR 1M |
| L | 3-5 Y / 3.20M | 2-7/8Y / 2.255M | |
| XL | 3-5/8Y / 3.25M | 2-7/8Y / 2.60M | |
| 2X | 3-2/3Y / 3.30M | 2-7/8 / 2.65M | |
| 3X | 3-2/3Y / 3.30M | 3Y / 2.70M | |

CUTTING INSTRUCTIONS

PATTERN PIECES

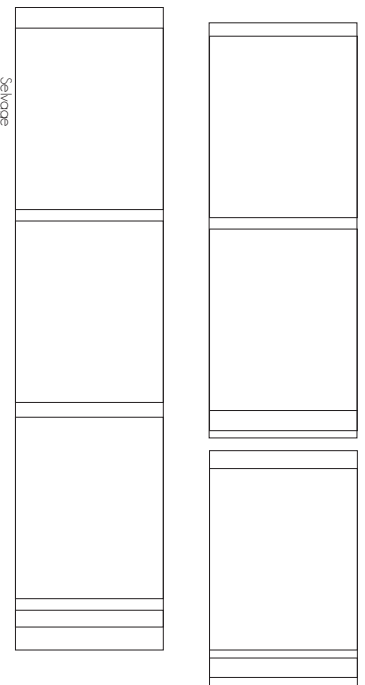
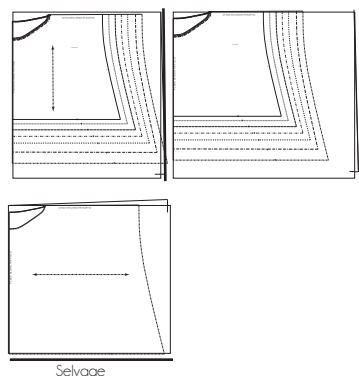
- + BODICE CUT IN ONE PIECE
- + NOT INCLUDED:
- + SKIRT PANELS 27" LONG X WIDTH OF THE FABRIC
- + WAIST BAND 2" WIDE X WOF
- + ARMHOLE BINDING EACH: 1-1/2" OR 38MM X 16" OR 40CM

ALL PATTERN PIECES
INCLUDE
5/8" or 1.60cm SEAM
ALLOWANCE UNLESS
OTHERWISE STATED

- Whether 44 or 54" wide fabric, fold the fabric in half selvage to selvage, then fold in half again cross-grain. You will have 4 layers of fabric. Place the folded sides along the left side and along the top edge on a flat surface. Place the bodice as shown with the front center along the left sided fold, and the shoulder edge along the top sided fold. Note for size 3X, 44" wide fabric has to be folded differently, see below.
- Cut the back neck out through all layers, the side and bottom edge. Now carefully cut out the front curve from the front layer only.

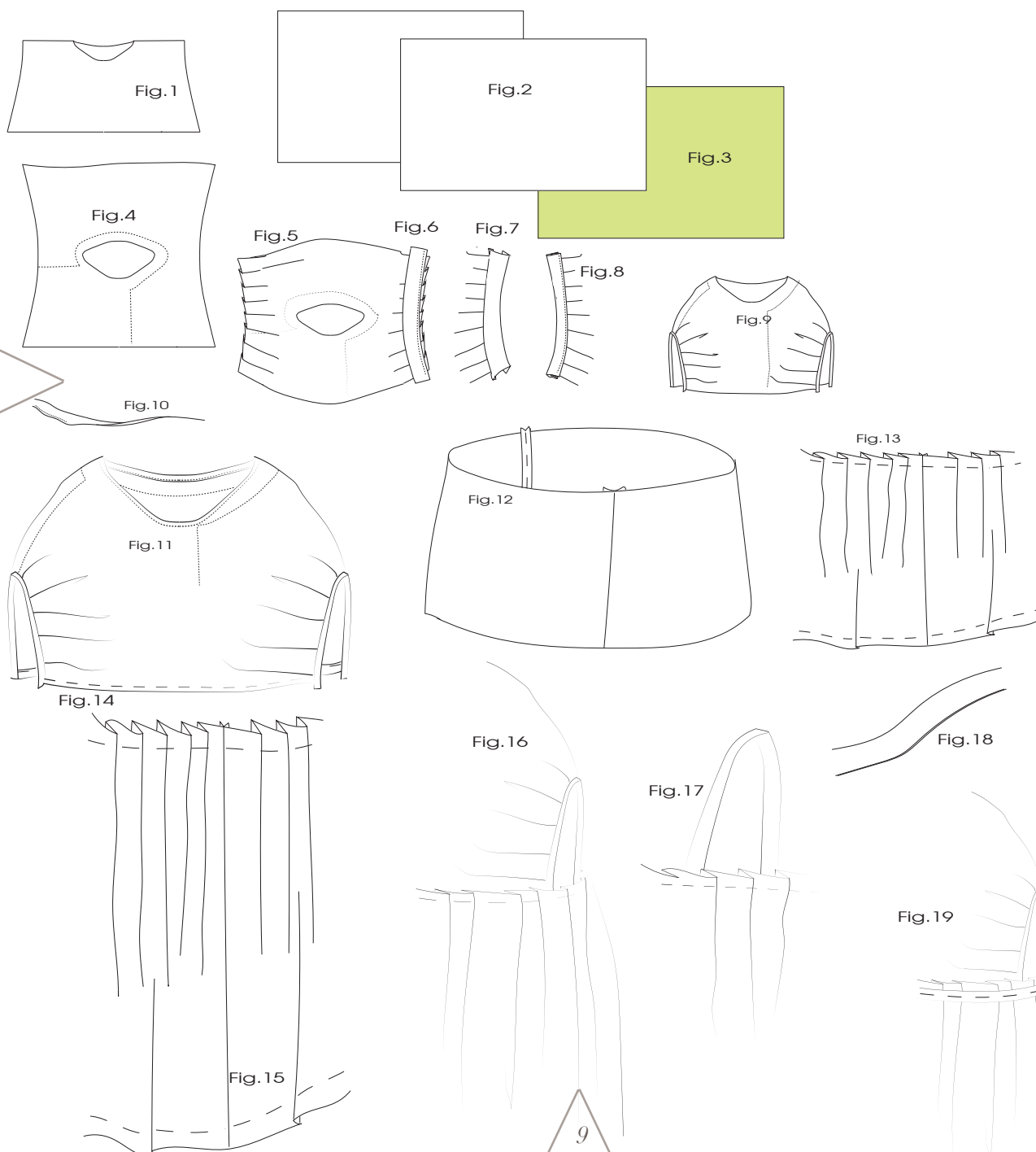
For SIZE 3X Using 44" wide fabric

- For 3X (44" wide) fold the fabric but turn the fabric so the selvage will run along the bottom edge of the bodice as shown.
- **Skirt Panels:** Cut a piece off the folded fabric 27" long. You need 3 panels if you are using one color fabric; or cut 2 from fabric A and 1 from fabric B. Cut off the selvage.
- If you are using 54" wide fabric your skirt panel widths will be wider than if using 44" wide. You can cut off the extra 10" or keep them for a fuller skirt.



© TG Studios

This product is prohibited from being reproduced in any way or format. Creating garments from this sewing pattern for commercial sale is prohibited. All rights are reserved, TG Studios, llc.



SEWING INSTRUCTIONS

Eileen Dress • Tunic

Review the diagrams on page 9

- #1 Illustrates the cut bodice. #2 The skirt panels, #3 in second color (or in same)
- #4 Optional - We used contrast color in top stitching the Eileen. Follow the diagram for a suggested stitch path.
- #5 Make $\frac{1}{2}$ " pleats spaced evenly along the side edges of the bodice. This will form the armholes. When pleated the armhole should measure as follows:
XS: $14\frac{1}{4}$ " / 35cm • S: $14\frac{1}{4}$ " / 36cm • M: $14\frac{1}{2}$ " / 37cm • L: 15" / 38cm • XL: $16\frac{1}{4}$ " / 41cm • 2X: $17\frac{1}{4}$ " / 43cm • 3X: 18" / 46cm
- #6-8 Using the bias binding to bind the armholes. Place the binding right sides together onto the pleated edge/armhole as shown. Stitch. Press the seam allowance and binding away from the bodice. Fold over the raw edge of the binding onto the wrong side of the fabric $\frac{1}{4}$ " and press. Fold the binding over in half over the seam allowance and pin down on the inside of the bodice. Stitch down.
- #9 This is what your bodice should look like.
- #10-11 Make a small $\frac{1}{8}$ " or 3mm rolled hem around the neckline. Stitch down. Press.
- #12 Stitch the three skirt panels together, right sides together. Press.
- #13 Make 1" pleats evenly around the top edge of the skirt panels, so they equal the bodice width + extra 10".
- Optional Top stitch around the hemline $1\frac{1}{2}$ " or 4cm from the raw edge. And optionally make a small finished hem, $\frac{1}{4}$ " or 5mm. We left our hem raw.
- #14 Hem the bodice using a small $\frac{1}{8}$ " or 3mm rolled hem.
- #15 The skirt will be placed over the bottom edge of the bodice 1" above the bottom edge of the bodice. Pin the skirt in place, leaving 5" or 12cm between the bound armhole edges as shown in fig.16 and 17.
- Stitch the skirt in place.
- Using the 2" wide strips you precut, fold them in half lengthwise, right sides facing out. Pin these onto the stitched line around the bodice as shown in fig.19.
- Stitch through the center of the strip. If using second color as we did, we matched the skirt color and strips.

11

12

12

13

14

14

15

16

17

18

18

19

20

21

22

23

24

25

26

27

28

29

30

30

31

32

33

34

35