

Sew
tina givens

Twiggy TG-A202392

BABY DOLL DRESS/TUNIC
Petite - 3X



TWIGGY BABY DOLL DRESS / TUNIC TG-A202392

Twiggy

TG-A202392

TUNIC OR DRESS, this sweet Baby Doll is perfect! Feminine and clever construction.

- WITH A SWEET CROSS OVER EXTERIOR BODICE FRONT AND SIMPLE BACK, WE LAYERED THE FRONT WITH AN INSIDE FRONT BODICE PANEL GIVING THE BABY DOLL TUNIC SOMETHING SPECIAL. LONG SLEEVES WITH AN OPTIONAL KEY-HOLE AT THE CUFF AND BINDING. OPTIONAL BUTTON PLACEMENT OR USE LONG RIBBON TO CREATE A TIE EFFECT. FULL SKIRT PANELS GIVE THIS TUNIC/DRESS IT'S PERSONALITY, HEMMED BOTTOM.



MATERIALS

Fabric: Lightweight linen, Cotton Voile, Wovens, Rayon, Silks.

REQUIREMENTS 44" WIDE FABRIC

PT	4 Y / 2.38M
XS	4 Y / 2.38M
S	4 Y / 2.38M
M	4-1/8Y / 2.55M
L	4-1/8Y / 2.55M
XL	4-1/4Y / 2.60M
2X	4-1/4Y / 2.60M
3X	4-1/4Y / 2.60M

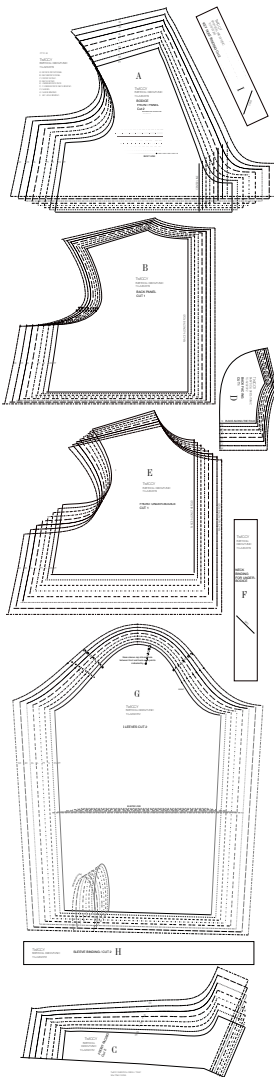
REQUIREMENTS 44" WIDE FABRIC

PT	3-1/2Y / 1.95M
XS	3-1/2Y / 1.95M
S	3-1/2Y / 1.95M
M	3-2/3Y / 2.08M
L	3-2/3Y / 2.08M
XL	3-2/3Y / 2.08M
2X	3-2/3Y / 2.08M
3X	3-2/3Y / 2.08M

FOR DRESS LENGTH: ADD 1/4Y OR 30CM

+ 1 SMALL OR LARGE BUTTON FOR FRONT CLOSURE

OPTIONALLY YOU CAN USE A LONG RIBBON TO SECURE FOR A DIFFERENT LOOK.



SIZE CHART

Women's Size Chart
In Inches

SEWTG SIZE	PT	XS	S	M	L	XL	2X	3X	4X
US SIZE	2-4	6-8	10-12	14-16	18-20	22-24	26-28	30-32	34-38
EUR SIZE	29-30	32-34	36-38	40-42	44-46	48-50	52-54	56-58	60-62
BUST	26-28	30-32	33-35	36-38	39-41	41-46	48-51	53-56	58-62
WAIST	20-22	23-25	26-28	29-31	32-34	35-39	41-44	45-48	50-52
HIP	29-30	32-34	35-37	38-41	41-44	45-48	50-53	55-58	60-62
BACK LENGTH	15 1/2	16	16 1/2	16 3/4	17	17 1/2	18	18.5	19
SLEEVE LENGTH	23 1/4	23 1/4	23 3/4	24	24	24 1/2	24 3/4	24.75	25
NECK WIDTH	12 1/2	13 1/2	14 1/8	15	15 3/4	16 1/2	17 1/4	17 3/4	18
FRONT WAIST LENGTH	16 1/2	17	17 3/4	18 1/2	19 1/4	20 1/4	21 1/4	21 3/4	22 1/4
BUST POINT	9	10	10 3/4	11 1/2	12 1/4	13	14 1/4	14 3/4	15 1/4
UPPER ARM CIRCUMFERENCE	9 3/4	10 1/4	11 1/8	11 7/8	12 3/4	14 1/2	15 3/4	17 1/4	18 1/2
ARMS EYE	14 5/8	15 3/8	15 3/4	17	18 3/8	20 5/8	21 3/8	23	24 3/8
Please note your approximate size and ensure your personal measurements fit within the listed measurements on this chart. If your arm circumference measures 10-1/2" please use the M size which shows 11-1/8".							<i>Sew tina glvens</i>		

GARMENT MEASUREMENTS

SIZE	BUST	SHOULDER	SLEEVE	BODICE LENGTH	TUNIC LENGTH	DRESS LENGTH
PT	40"	4-1/3"	22"	12-3/4"	36-1/8"	41-1/8"
XS	43-1/3"	4-1/8"	22-1/8"	13"	36-1/3"	41-1/3"
S	46-2/3"	5-1/3"	22-1/4"	13-1/4"	36-2/3"	41-2/3"
M	50"	5-7/8"	22-1/2"	13-1/2"	36-7/8"	41-7/8"
L	53-1/3"	6-1/3"	22-3/4"	13-3/4"	37-1/8"	42-1/8"
XL	56-2/3"	6-7/8"	23"	14"	37-1/3"	42-1/3"
2X	58"	7"	23-1/2"	14-1/2"	37-1/3"	42-7/8"
3X	60"	7-1/8"	23-3/4"	15"	38-1/3"	43-1/3"

View your body measurements against the size chart above, and select the size you prefer. Review the garment measurements and determine how you'd like the garment to fit. I designed Twiggy to have a nice sized shoulder, shorter bodice and wide bust area.



CUTTING INSTRUCTIONS

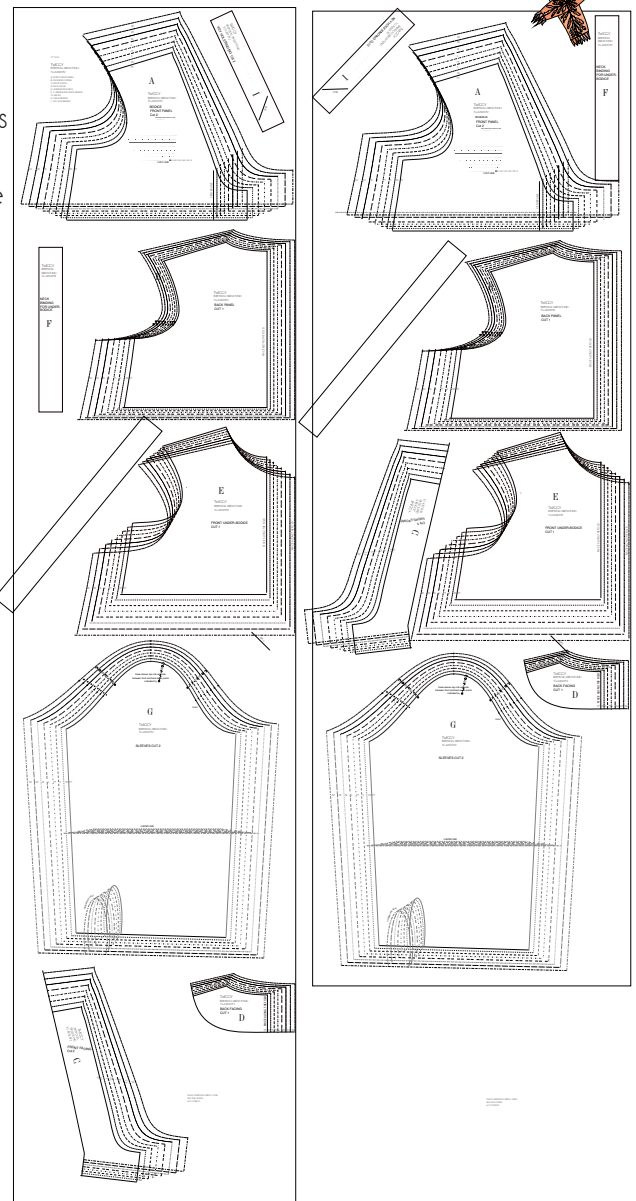
CUTTING LAYOUTS are shown here. Please reference them as suggested cutting layouts! Note sleeves have a back and front noted, make sure to either mark with chalk or a pin on the back side.

Fold your fabric selvage to selvage. Lay out your pattern pieces.

- Pattern pieces:
- A BODICE FRONT, CUT 2
- B BODICE BACK CUT 1 along the fold
- C FRONT FACING Cut 2
- D BACK FACING Cut 1 on the fold
- E UNDER-BODICE Cut 1 on the fold
- Optionally you could choose a different fabric in color or print for the under-bodice!
- F UNDER-BODICE NECK BINDING Cut 1 on the bias
- G SLEEVES Cut 2, note back and front caps
- H SLEEVE CUFF BINDING cut on the bias
- Cut the optional Key-Hole detail
- I Optional Key-Hole Bias Binding Cut 1
-
- NOT INCLUDED - CUT TWO SKIRT PANELS
- TUNIC - WIDTH OF THE FABRIC X 25"
- DRESS LENGTH - WIDTH OF THE FABRIC X 30"

44" WIDE

54" WIDE

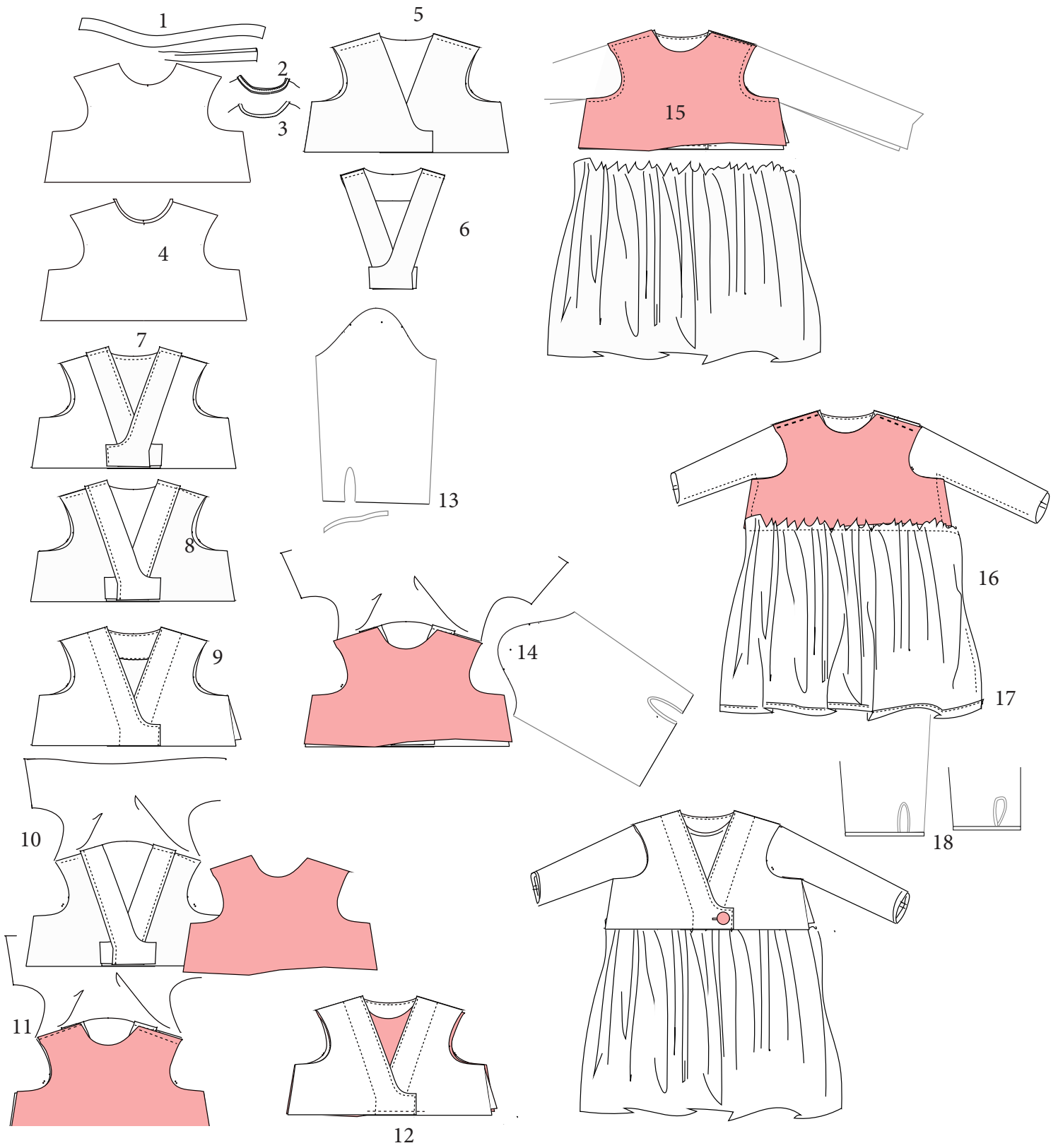


TECHNIQUES & NOTES

This baby-doll design is meant to have a wide body and slim sleeves, optional keyhole at the wrist. The skirt is full and hangs beautifully from the cross-over bodice with its under-bodice piece.

Using: Straight Stitching, finishing seam raw edges, adding facings, binding Neckline and Cuffs (optional hemming of cuffs if you do not choose to add the keyhole. Hemming No pockets but you could optionally add them. I felt the dress has a lot of fabric to entertain side pockets.

SEWING INSTRUCTIONS



TWIGGY

SEWING

INSTRUCTIONS

1. Using the bias strip for the under-bodice piece, bind the neckline.
2. Add the binding to the under-bodice neckline only, place right side of the binding to the wrong side of the bodice and stitch on using 1/4" seam allowance. Press the binding and the seam allowance upward.
3. Fold the raw edge of the binding over 1/4" and press. Then fold again and pin down covering the stitches.
4. Stitch the binding down on the front side of the garment. Press.
5. Place the two front cross-over bodice pieces onto the back bodice piece matching the shoulders. Wrong sides of the fabric together. Stitch. Press.
6. Place the two front facings pieces onto the back facing piece and stitch at the shoulders;. Press. Either fold the outer raw edge of the facings 1/4" to the wrong side and press, or zig-zag or over-lock the raw edges.
7. Place the facing onto the bodice, right sides of the fabric together, pin around the neckline and fronts. Stitch using 1/2" seam allowance.
8. Turn the facing into the bodice, so wrong side of the facing is facing the wrong side of the bodice. Pin the facings down. Press.
9. Stitch the facings down as shown.
10. Open up the bodice so the front faces you, and the back away, wrong side facing upward. Lay the Under-Bodice panel onto the garment matching the shoulder seams from the outer edge. Note the neck of the under-bodice is wider than the bodice neckline, by design.
11. Stitch the shoulders onto the shoulder seam allowance of the bodice.
12. Lay the garment right side out and you should have the under-bodice in place, baste the bottom front where the cross-over occurs to secure.
13. Prepare the key-holes by using the binding strips, and use same technique as we used for the neckline. Just open up the curved keyhole and place the binding onto it. Sew away.
14. Time to add the sleeves, pin the shoulder point of the sleeve onto the shoulder seam of the bodice, right sides together, and continue to pin the sleeve into the armscyes. Noting the back of the sleeve curved edge goes into the back of the bodice. Stitch in place and press.
15. Using the skirt panels, gather the top edge of each skirt piece so it measures the same as the bodice bottom. Repeat for second skirt panel. Baste gathers. Right sides of the fabric together, pin the skirt panel onto the front of the bodice bottom edge and pin in place. Stitch together. Repeat for the second skirt panel onto the back of the bodice.
16. Press the seams. Place the garment wrong side out as shown, and pin the under sleeves, and down the sides of the garment, matching the front and back skirt seams. Stitch. Press.
17. Hem the skirts, by folding to wrong side of the fabric 1/4" and then again 1". Press, and stitch down. Press again.
18. Finish the sleeves by either hemming if you chose not to use the keyhole detail; or binding the sleeves as you did before for the neckline, this time the binding should fit around the sleeve, and edges joined prior to adding to the sleeve.
19. Note you can bind with the keyhole apart as shown, or on the right cross the ends over and finish binding.