

PRISCILLA

TGF-A4016

Slip

WWW.SEWTINAGIVENS.COM

AMAZING SLIP, YOU HAVE TO HAVE ONE!! THIS IS SIMPLY GORGEOUS BUT IT IS NOTHING WITHOUT YOU IN IT!



XS ... BUST 32-36"
S.... BUST 36-40"
M... BUST 40-44"
ML BUST 44"-46"
L ... 46-48"



Materials { Lightweight Fabric

--- F A B R I C ---

WIDTH OF FABRIC 54"

XS,S 2-7/8 YDS

M,L,ML..... 3 YDS

A-LINE SLIP DRESS WITH DRAWSTRING CHANNEL AT FRONT AND BACK. DRAWSTRING THREADS THROUGH AND TIES ON ONE SHOULDER. MAKE THIS IN LIGHT-WEIGHT FABRIC.. MUST BE 54" WIDE!

Pattern Preparation

SIMPLY PRINT OUT THIS PDF DOWNLOAD PATTERN ON LETTER SIZE PAPER

(8.5x11 IN US OR EURO SIZE)

Tape all the join lines together. It's that simple. For more info see instructions online at www.sewtinagivens.com

ONCE ALL TAPED TOGETHER SELECT THE SIZE YOU WISH TO MAKE, SEE OUR SIZE CHART AND CUT OUT YOUR PAPER PATTERN PIECES.

© tina givens

Cutting

Simply cut both back and front panels along the fold of your fabric. Cut 1 drawstring 2" wide by the width of the fabric. Cut ruffles: 4 strips 3" wide. Cut two bias binding strips 2" x 22" each.

Sewing Instructions

NOTE: ALL SEAMS ARE 3/8"
UNLESS OTHERWISE STATED!

Place the slip pattern pieces wrong side to wrong side, matching outer side seams. See fig.1. Using French seam (see below) stitch the side seams together.

Technique: French Seam --

Place garment right sides facing outward, stitch seam; press then place garment right sides inside and stitch again. This encases the raw seam allowance and just finishes the dress beautifully.

- Using the 20" x 2" bias binding strips, place one onto the armhole edges, and across the side seam as in fig.2. Right side to right side. Stitch.
- Press seam allowance onto the binding, and roll the binding strip over 1/4" and press (fig.3.). Roll again 1/4 or so over the seam allowance and pin just past the inside seam stitches. See fig.4. Stitch down. Repeat for other armhole.
- Roll the top edges of both back and front to wrong side 1/4" and press. Roll again 1/2" and press. Stitch as in fig.5. Do not stitch the sides.

© tina givens

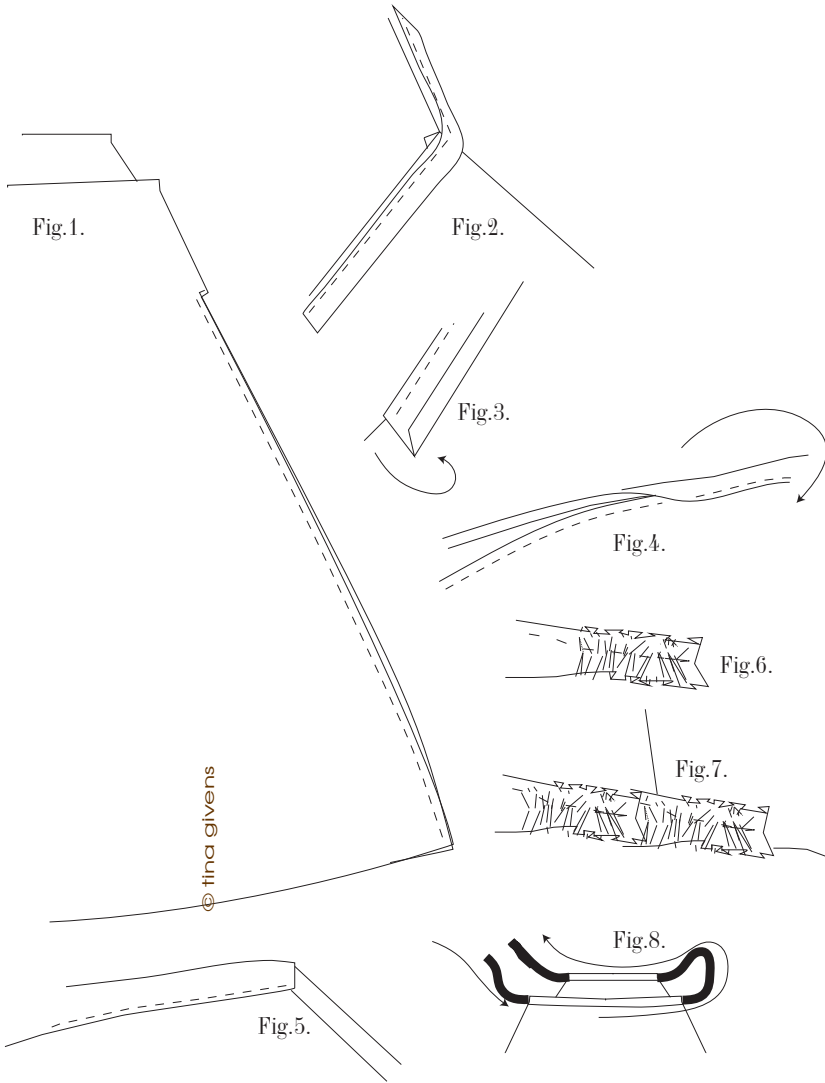
- This will form the drawstring channels.
- Hem the dress by rolling the fabric onto the RIGHT side of the fabric, 1/8" and again 1/8" and press. Stitch the hem.
- PREPARE THE RUFFLES - Using a zigzag stitch around the edges of all 4 strips you precut for ruffles.
- Then run a gathering stitch or free-hand ruffle through the center of the strips as in fig.6. You should be ruffling the strips to just over 1/2 their size.
- Place the ruffled strips along the hemline of the slip as in fig.7. Bottom edge of the ruffle should be slightly longer than the dress. Place them along the right side of the dress, and pin along the stitch line. Overlap each ruffle about 1" until all 4 ruffles are used.
- NOTE: PLACE THE RUFFLE WRONG SIDE ONTO THE DRESS RIGHT SIDE of the fabric.
- Stitch through the center line of the ruffles as in fig.7.
- Make your drawstring by folding the strip you precut in half lengthwise. Stitch along the edge. Turn with a large safety pin or turning tool, and press your drawstring.
- Thread one end through the back channel of the slip, out and then back into the front channel, see fig.8.
- Finish the ends of the drawstring by hand stitching the ends, tucking in the raw edges, or knotting the ends.
- Garment wash the slip to get that laundered linen softness, dry in the dryer on warm and hang. Trim off any ruffle threads, and you are ready to look gorgeous.

tina givens™

continued...



WWW.SEWTINAGIVENS.COM



© tina givens