

1A

1B

Back

Front

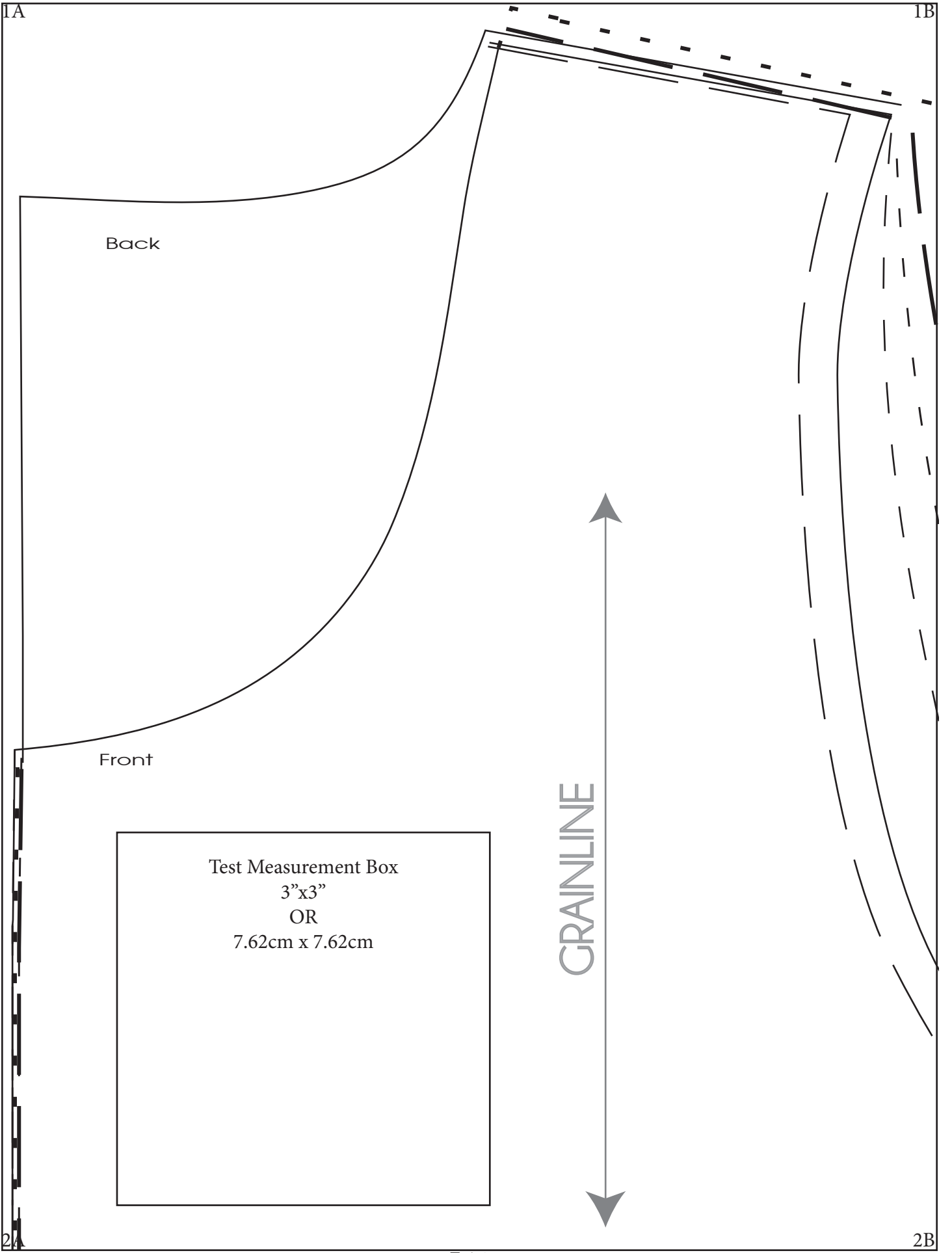
Test Measurement Box  
 3"x3"  
 OR  
 7.62cm x 7.62cm

GRAINLINE

2A

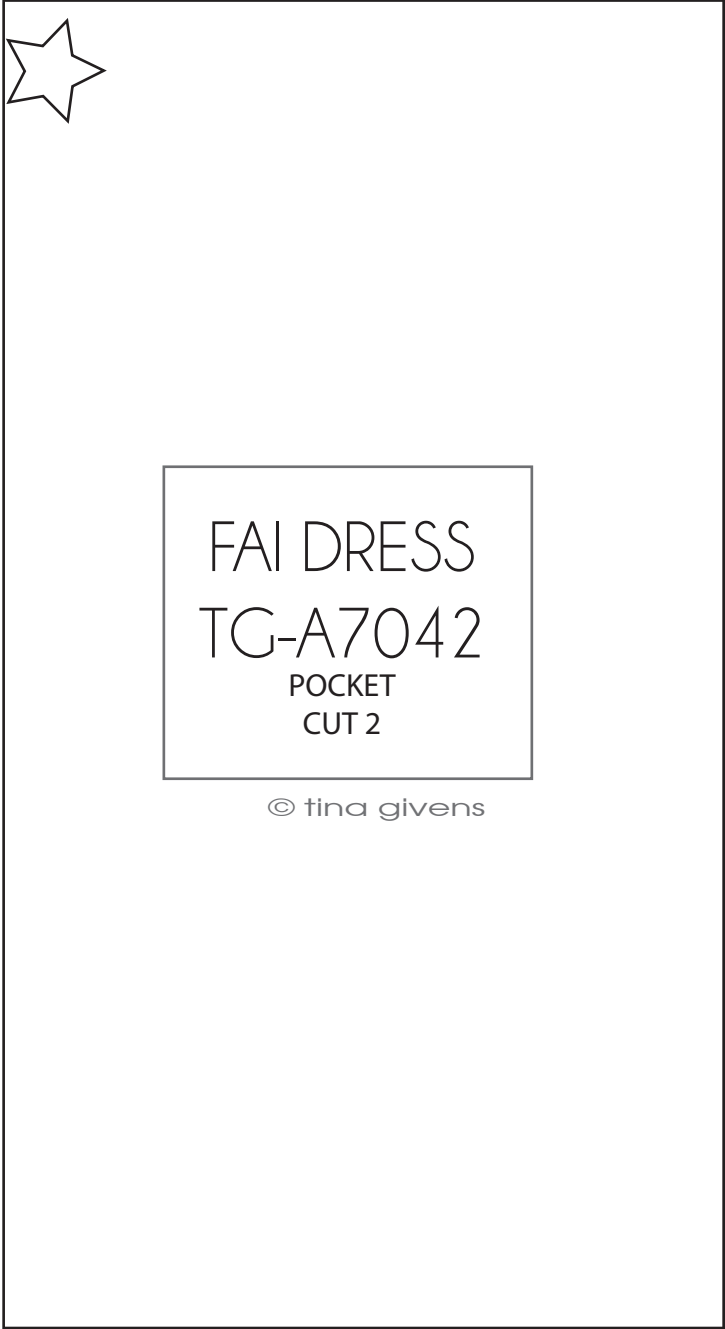
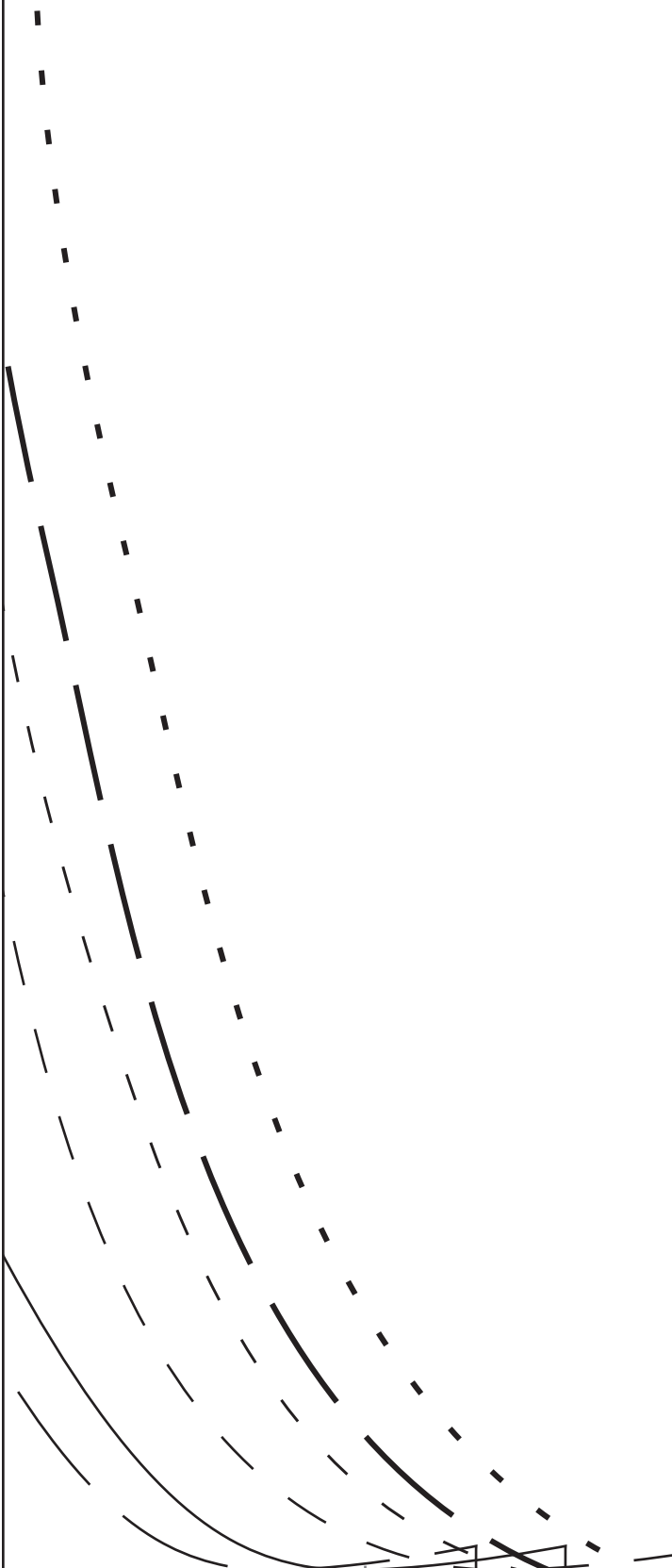
2B

Fai 1



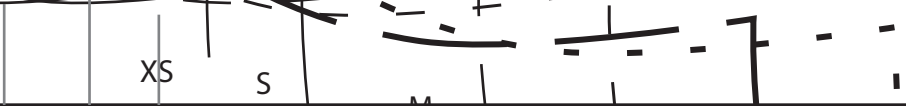
1B

1C



2B

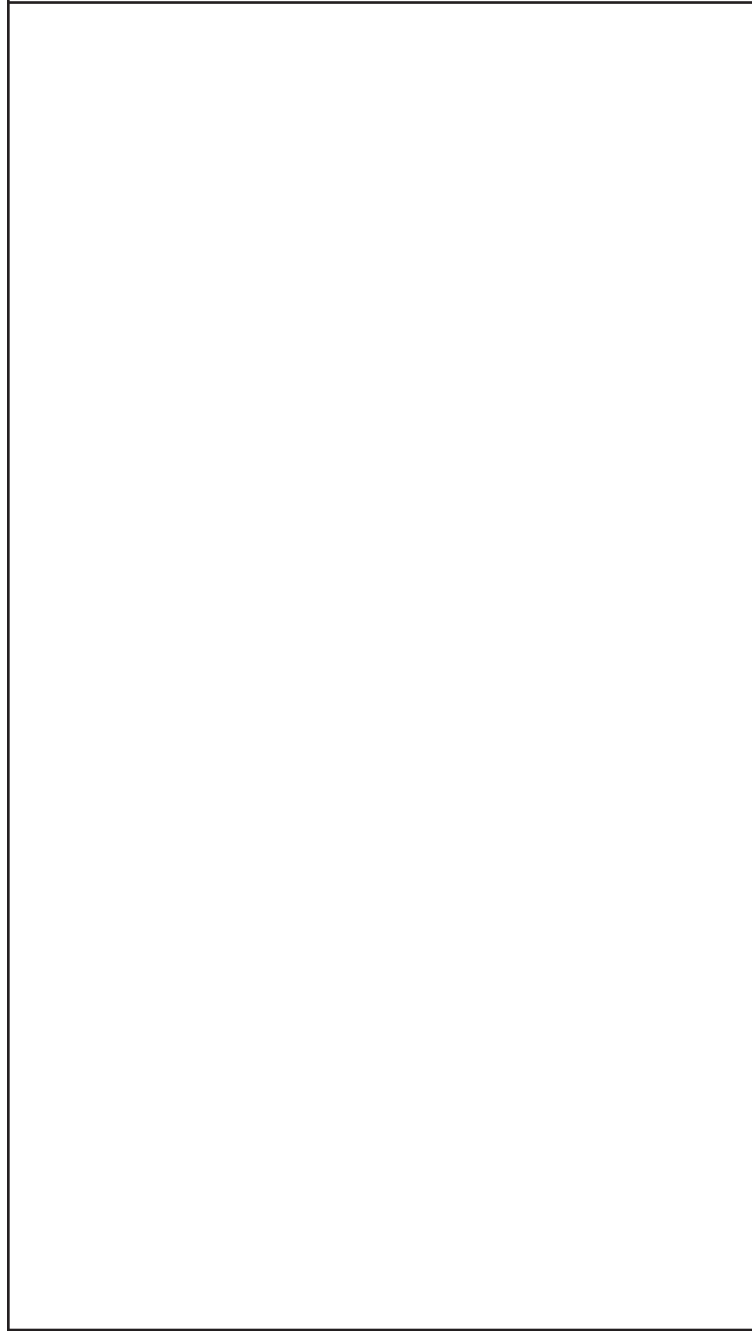
2C



Fai 2

1C

1D



2C

2D

2A

2B

-- PLACE ALONG THE FOLD --

FAI DRESS  
 TG-A7042  
 FRONT AND BACK BODICE PANELS  
 CUT ONE OF EACH  
 DIFFERENCE IS THE NECKLINE  
 © tina givens

### Pocket Placement



XS

S

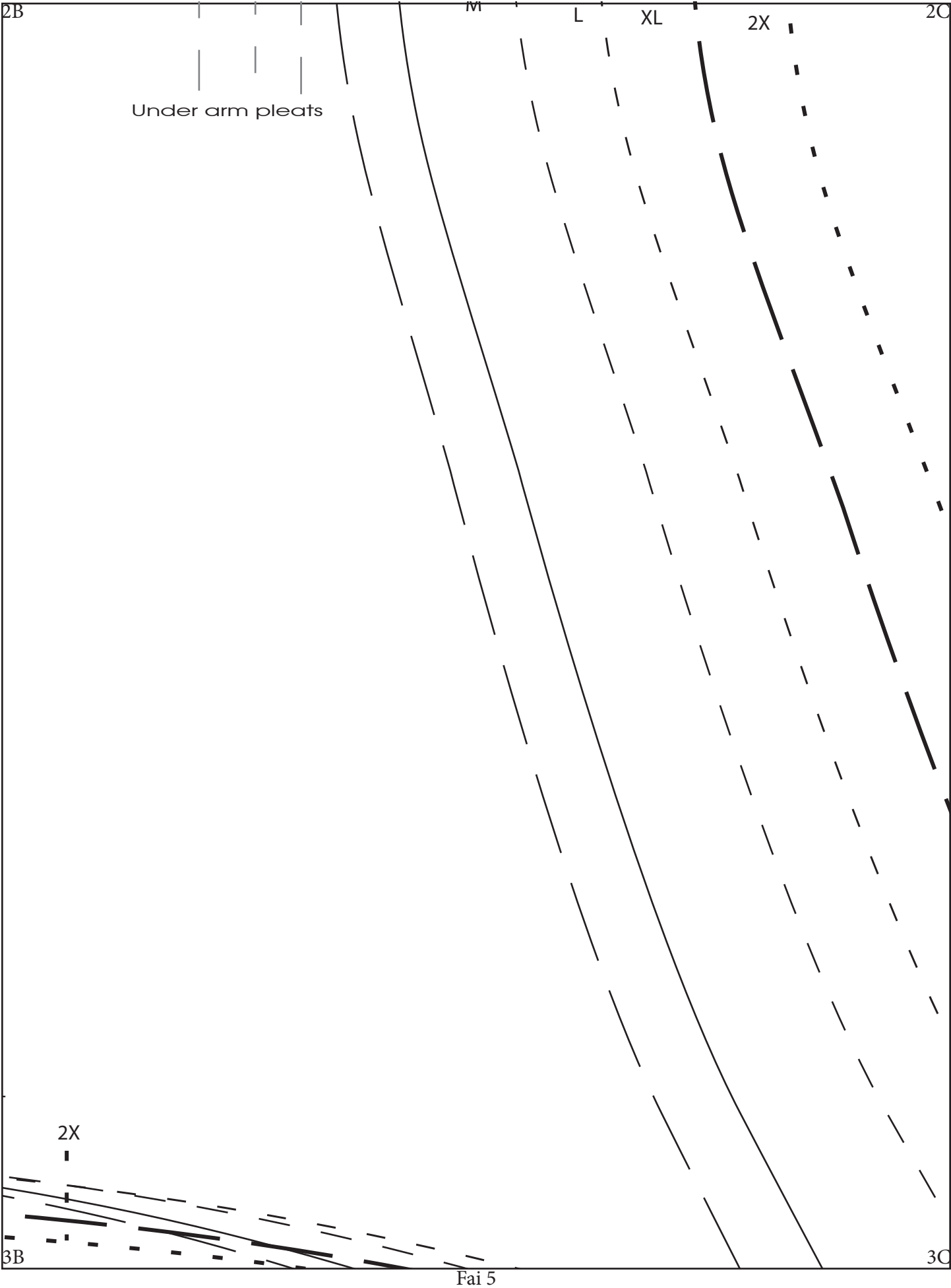
M

L

XL

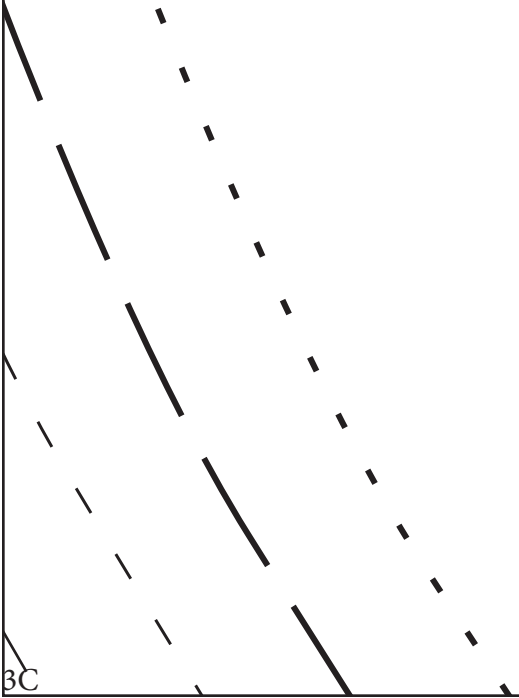
3A

3B



2C

2D



3C

3D

Fai 6

3A

3B

XS

S

M

L

XL



Pocket Placement



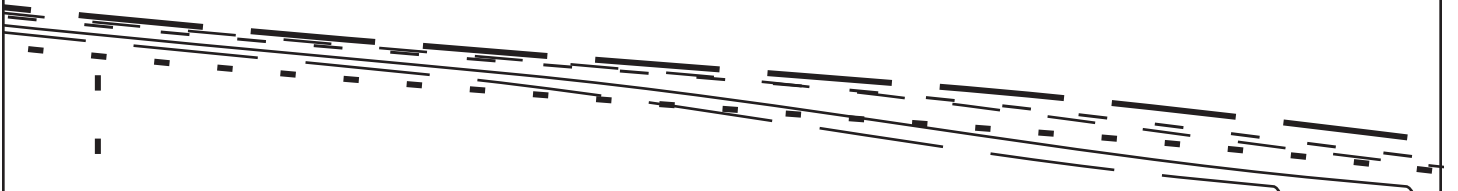
NE

4B

4A

3B

3C



2X

XS

S

4B

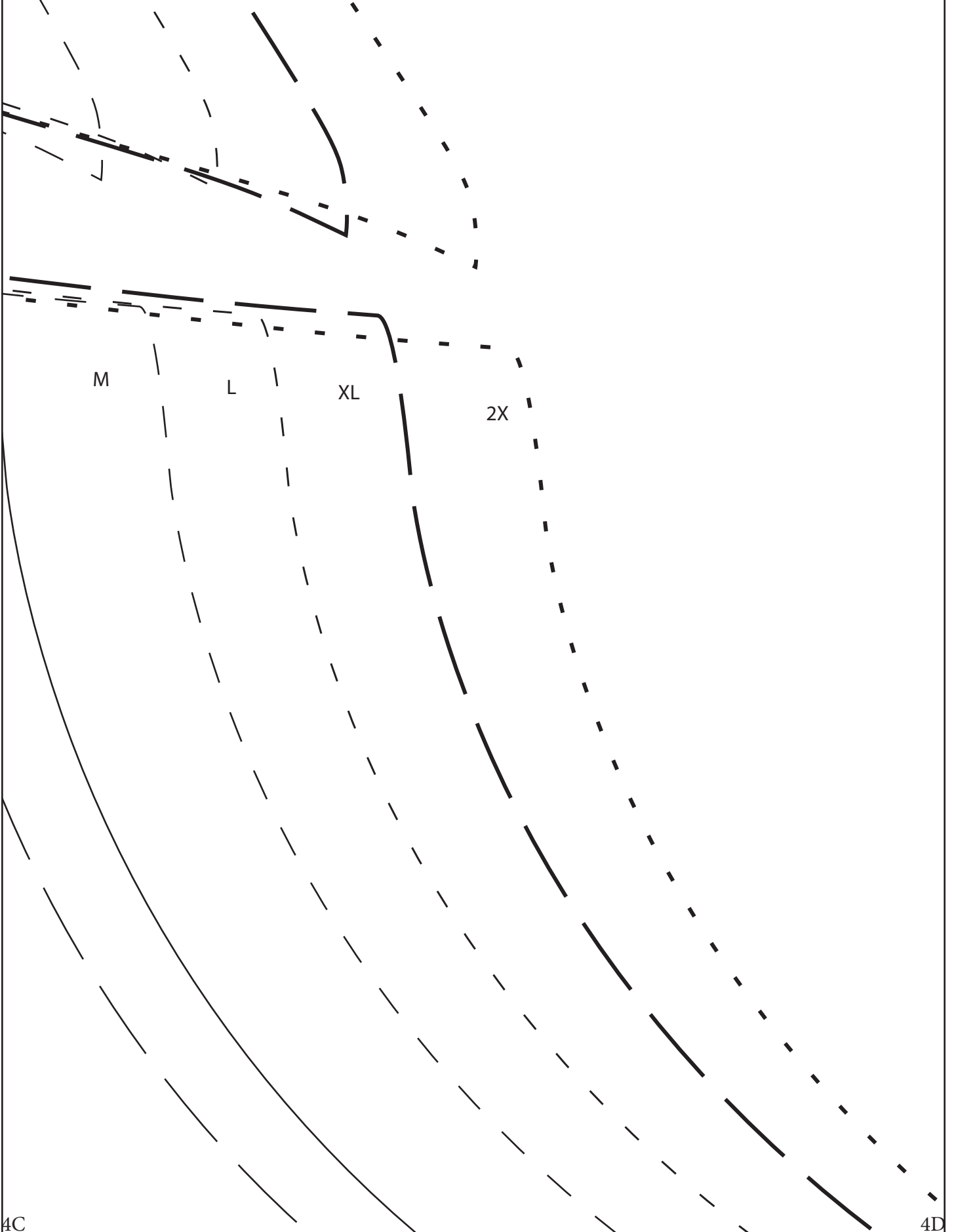
4C

© tina givens



3C

3D



M

L

XL

2X

4C

4D

Fai 9

4A

--- PLACE ALONG THE FOLD ---

5A

GRAIN ↓

4B



5B

4B

4C

FAI DRESS  
TG-A7042  
SKIRT PANELS  
CUT 2

5B

5C

4C

4D

5C

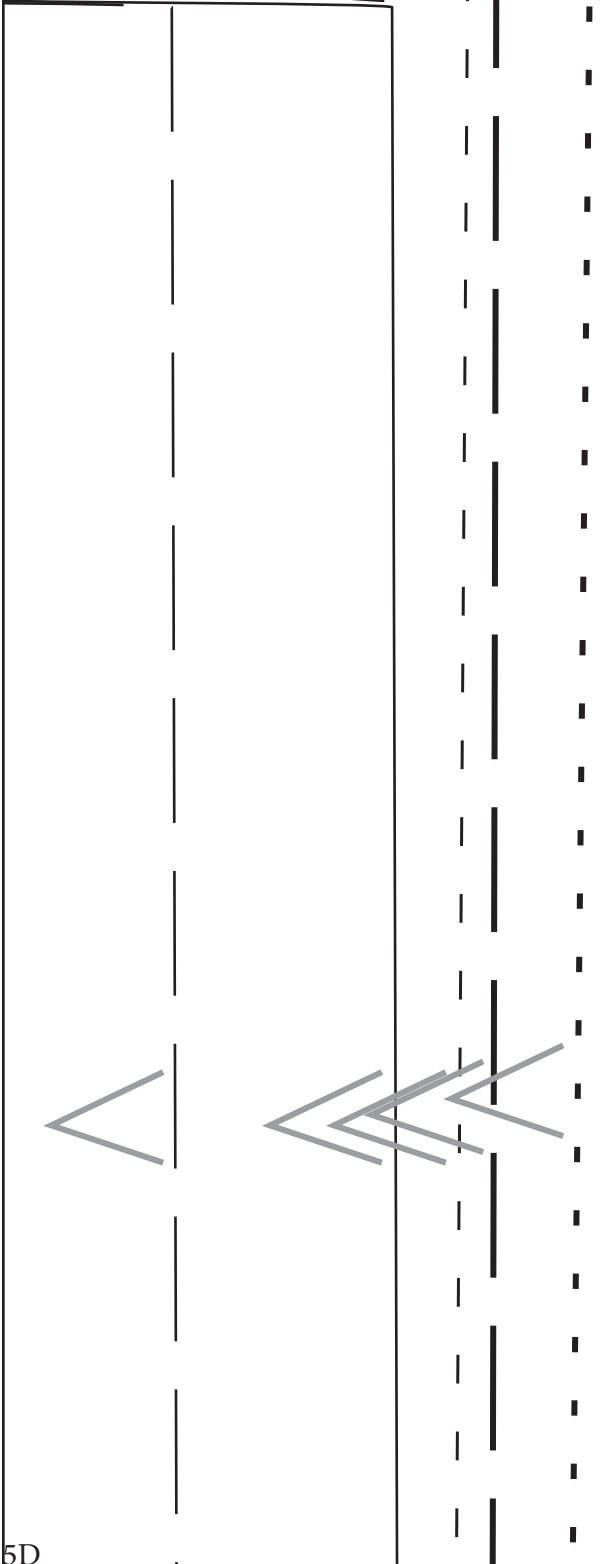
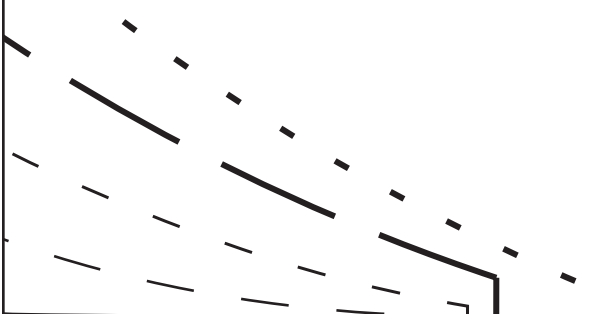
5D

Fai 12



4D

4E

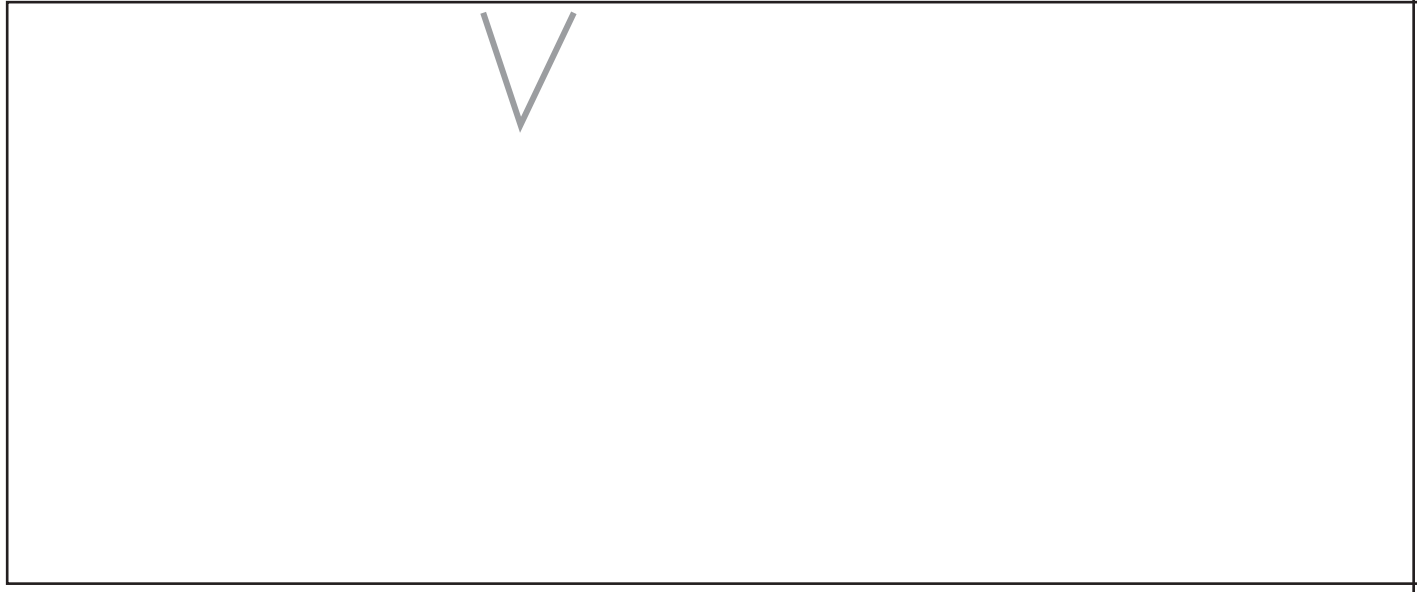
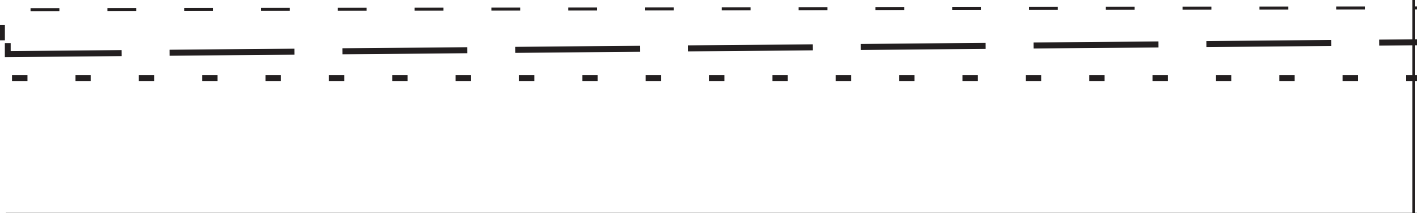


5D

5E

5A

5B

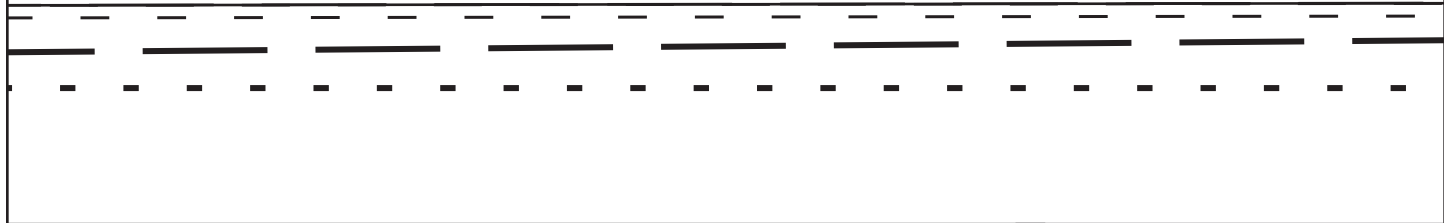


6A

5F

5B

5C



FAI DRESS  
TG-A7042  
SIDE TRIM  
CUT 2

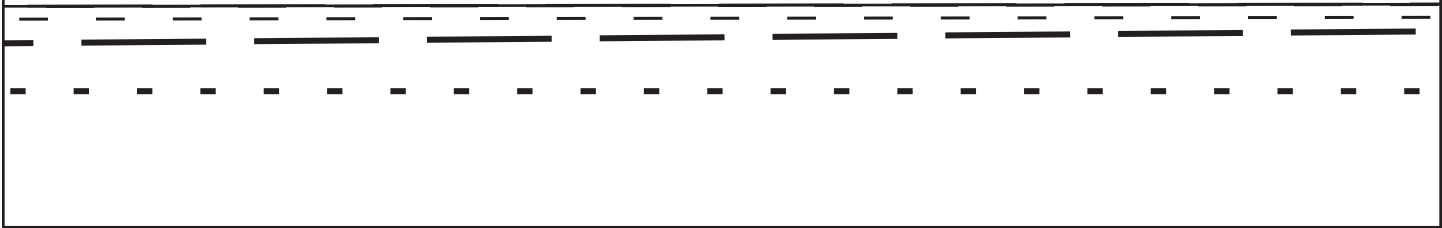
© tina givens

6B

5C

5C

5D



GRAINLINE

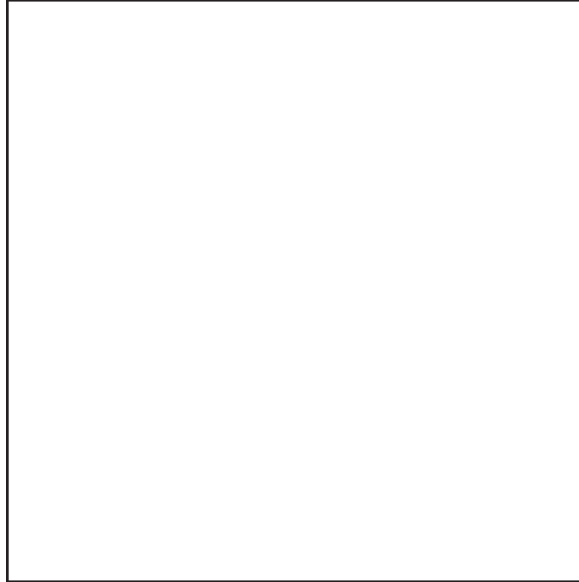
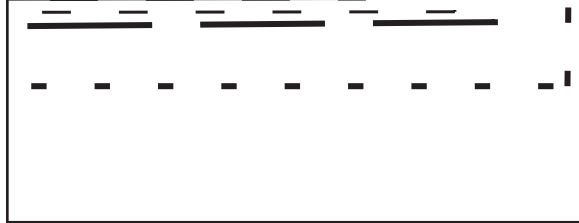
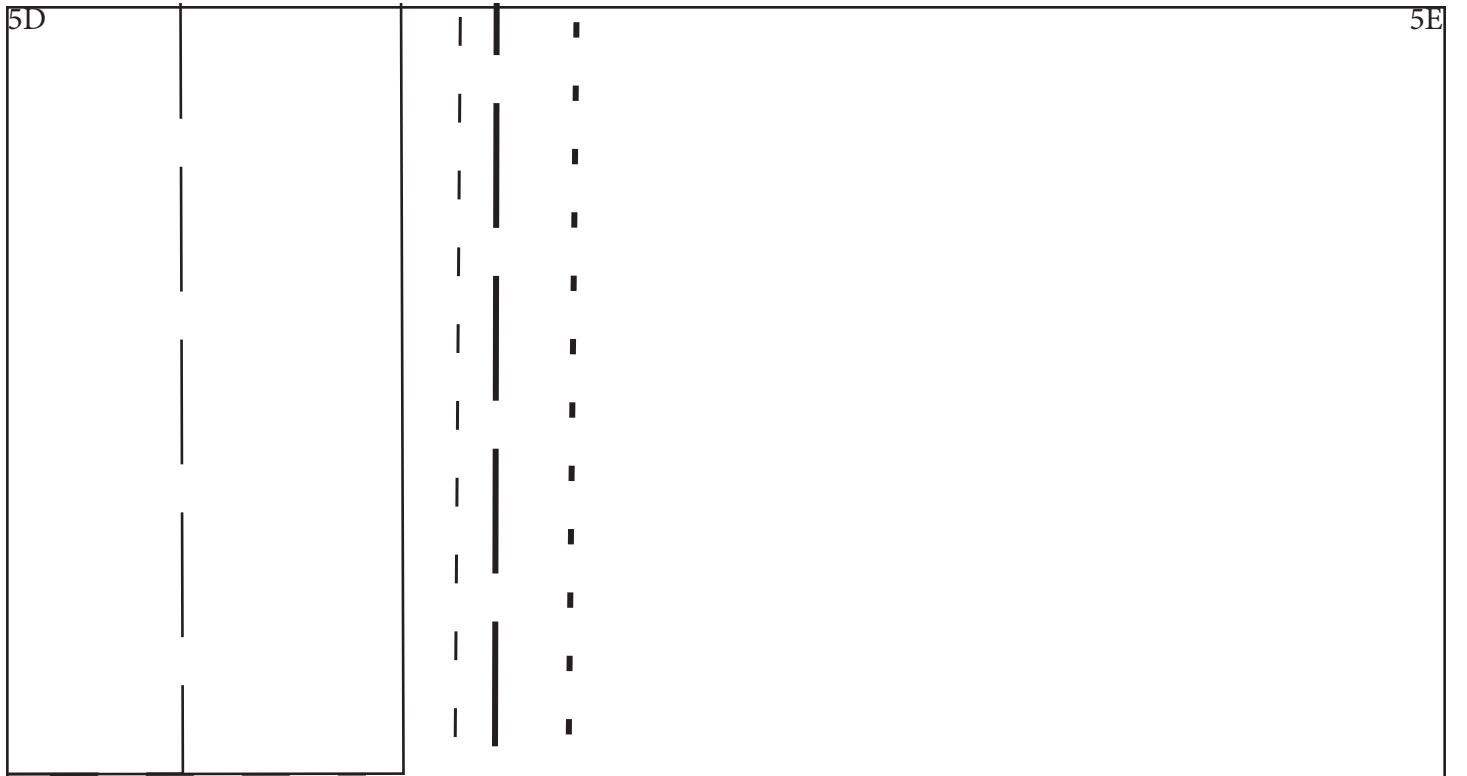
6C

5D



5D

5E



6D

5E

**Fai** Dress  
TG-A7042

*Pattern Preparation*

WE CHOOSE TO PRINT OUR PATTERNS ON HIGH QUALITY WHITE PAPER STOCK TO ENSURE YOU HAVE LONG USE.

PREPARE YOUR PATTERN -

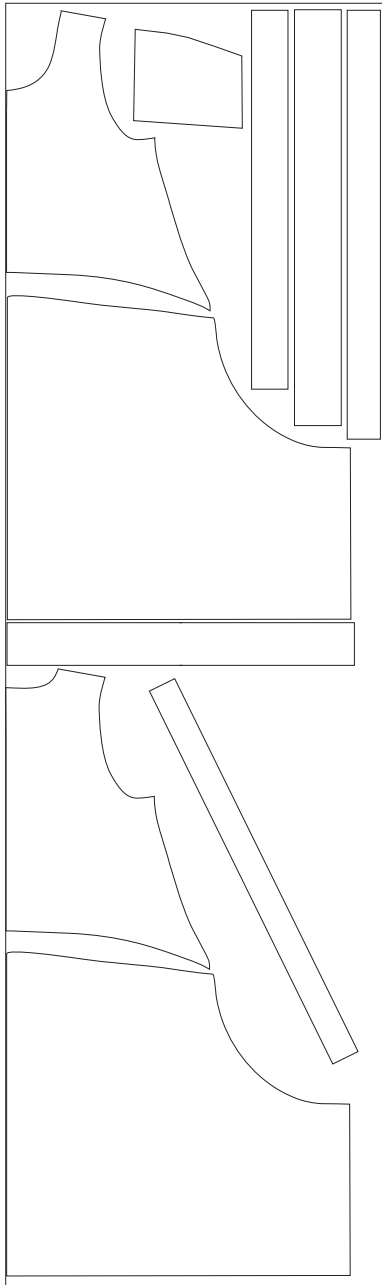
WE TRY TO KEEP ALL PATTERN PIECES INTACT, BUT ON OCCASION WE NEED TO CREATE JOIN LINES. SIMPLY CUT AND TAPE THE JOIN LINES TOGETHER IF NECESSARY. IT'S THAT SIMPLE.

ONCE ALL TAPED TOGETHER SELECT THE SIZE YOU WISH TO MAKE, SEE OUR SIZE CHART AND CUT OUT YOUR PAPER PATTERN PIECES.

S I Z I N G			
	US	UK	EUR
XS....	2	4-6	34
S....	4-6	8-10	36-38
M.....	8-10	12-14	40-22
L.....	12-14	16-18	44-46
XL....	16-18	20-22	48-50
2X....	20-22	24-26	52-54

*Materials*

LIGHT TO MEDIUM WEIGHT. WE USED LINEN + SCRAPS OF A LIGHT SILK AND MEDIUM WEIGHT FLORAL. CAN USE AN EYELIT COTTON OR LACE TOO.



**FABRIC:**  
**54"/55" WIDE**  
**(140CM WIDE)**

ALL SIZES .....

**2.5 YARDS OR**  
**2.25M**  
+  
**FABRIC 2 AND 3 USE**  
**SCRAPS SEE CUTTING**  
**INSTRUCTIONS (OR**  
**ABOUT 1/8 YARD EACH)**

## *Cutting*

ALL OF OUR PATTERNS INCLUDE  
THE SEAM ALLOWANCE,

Fai Dress -- pattern pieces include bodice (can cut front and a back as shown - review neckline; Pocket; Skirt; Hem Trim.

Cut the bodice and skirt pieces as shown along the fold of the fabric. Cut the two rectangles for the hem trim; and two pocket pieces. Also cut two lengths of bias binding as shown, 2" wide; and enough 3" wide strips as shown to equal roughly 110" or 275cm.

For scraps - fabric 2 -- cut three pieces:

- a) 9x2" or 23x5cm
- b) 8x3" or 20x8cm
- c) 4x2" or 10x5cm

Fabric 3 -- cut 2 rectangles --

- a) 15x2" or 38x5cm; and b) 12x2.5" or 30x6cm

# Sewing Instructions

NOTE: ALL SEAMS ARE 3/8"  
UNLESS OTHERWISE STAT-  
ED!

## FAI DRESS

- Refer to Fig.1. Using the rectangle measuring 9x2" or 23x5cm (Fabric 1) fold in half lengthwise and right sides facing outward, and tuck in the short sides. Press.
- Pin this strip across the center back as shown in fig.2. Leaving raw edge exposed along the bottom edge, stitch through to secure in place.
- Repeat for the rectangle in fabric 3 12x2" or 38x5cm. Stitch the short ends closed on this piece. And position as shown in fig.3. centered on back bodice (on right side of fabric). Baste stitch this piece in place.
- Pin a skirt panel onto the back bodice piece as shown in fig.4. Right sides facing. Stitch the waist line as shown.
- Position the pocket pieces in place as shown in fig.5. Refer to the pattern piece for placement. Right sides facing. Stitch both in place. Pin skirt onto front bodice as shown in fig.6. Right sides facing. Pin around pockets. Stitch, pivoting at corners of the pockets. Press.
- Using one of the bias cut strips 2" wide, zigzag stitch along one long edge and both short ends about 1/4" from edge. Then ruffle up the strip as in fig.7. along the raw edge (with no zigzag). Pin this length onto the right side of the fabric of the dress front as in fig.8. Should look like the diagram. If the bias you cut is too short, just add some length to it by using scraps. The ruffle should start 1" below the armhole, and to the side edge as shown. Baste in place.
- Using the remaining rectangle in fabric 3, again fold this piece in half lengthwise, right sides outward and tuck in short ends. Stitch short ends. Pin this strip, raw edge to raw edge along the other side of the dress front on the right side of the fabric, see fig.8.
- Place the front and back dress panels together, right sides facing and pin side seams as shown in fig.9. Stitch side seams.
- Refer to the pattern bodice piece and make 3 small pleats under each arm as in fig.10. Baste stitch along the under arm to secure. Adjust the pleats prior to stitching for a custom fit. Zigzag stitch around the armholes. (Optional: For a more finished armhole, you have enough fabric to cut more bias strips and bind the armholes.)
- Using the two rectangle pieces in fabric 1 add these to the sides, right sides facing as shown in fig.11.
- Join remaining strips together in fabric 1 to form strips long enough to equal the width of the bottom edge hem from one side to the other, both front and back. Place these along the hemline right sides facing and stitch, see fig.12.
- Using the bias binding, bind the neckline. And the rectangle in fabric 2 measuring 4x2" pin over the binding center front as shown in fig.13. Stitch in place. We left raw edges. You could optionally not use this piece or finish it first then pin and stitch in place. Your choice.
- Finally using the last of the extra pieces, rectangle 8x3" in fabric 2 - run zigzag stitch around all edges, then gather up the top edge as shown in fig.14, and pin along the bottom edge for added trim and excitement! Where you put this along the front or back of your Fai dress is up to you.... Just a little creative finish to your dress! And you are done. Launder your dress, steam and wear! We show the dress with our free PLINKA pant pattern found on [sewtingivens.com](http://sewtingivens.com)

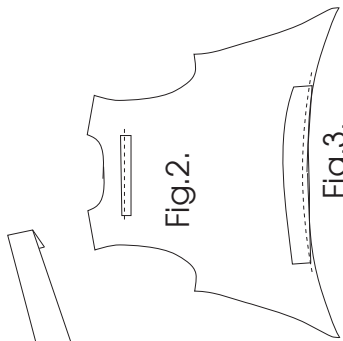
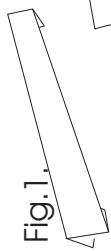


Fig. 2.



Fig. 3.

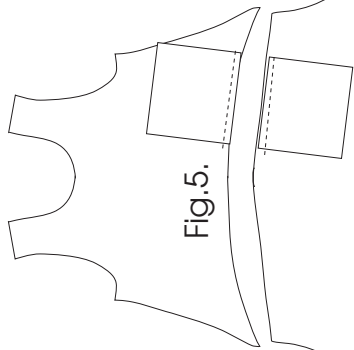


Fig. 5.

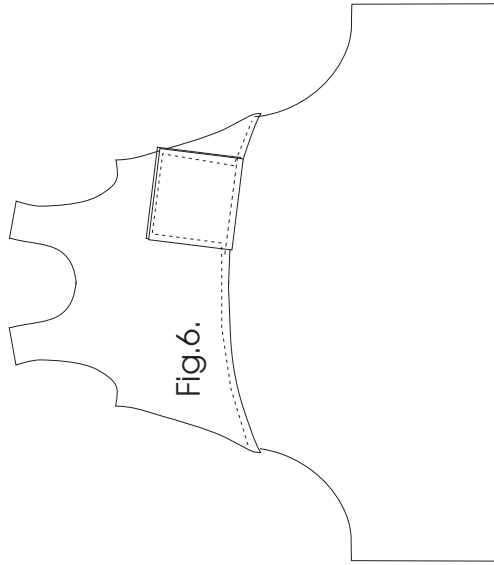


Fig. 6.



Fig. 4.



Fig. 7.

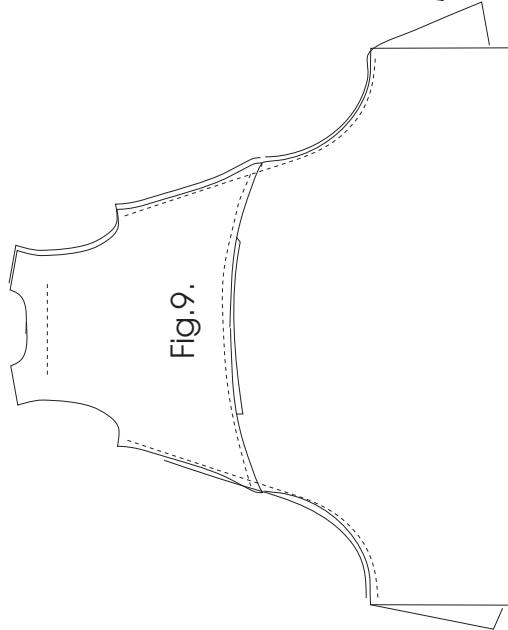


Fig. 8.

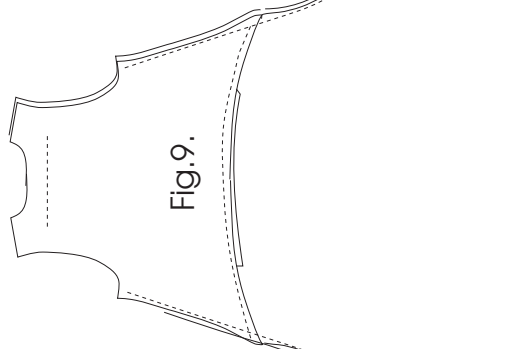


Fig. 9.

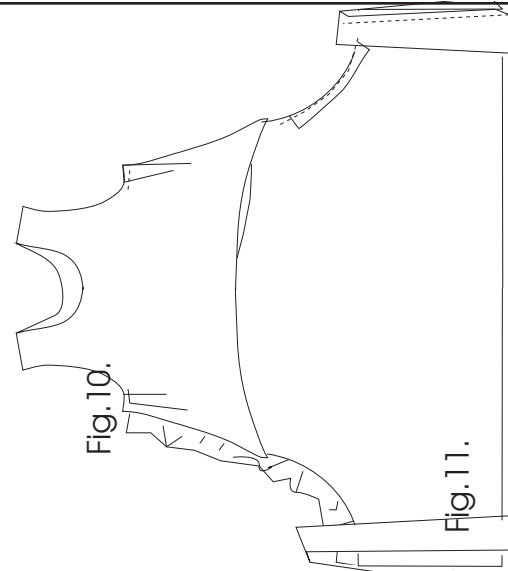


Fig. 10.

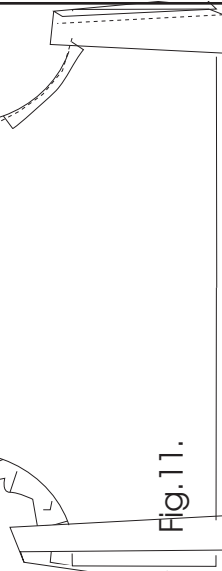


Fig. 11.

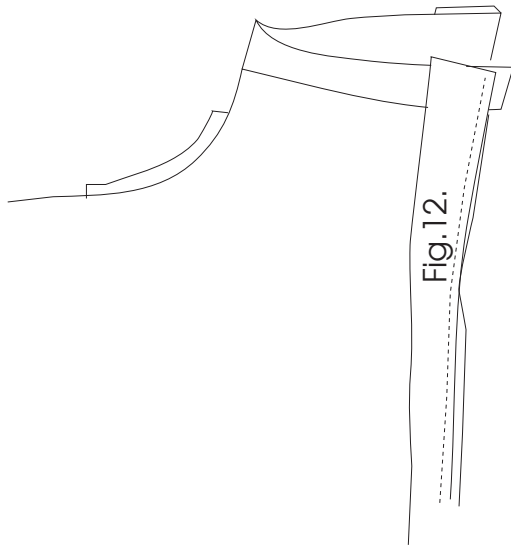


Fig. 12.

© tina givens

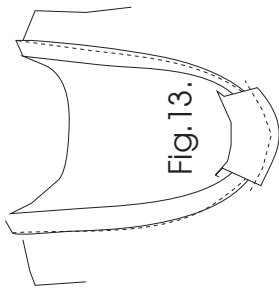


Fig. 13.

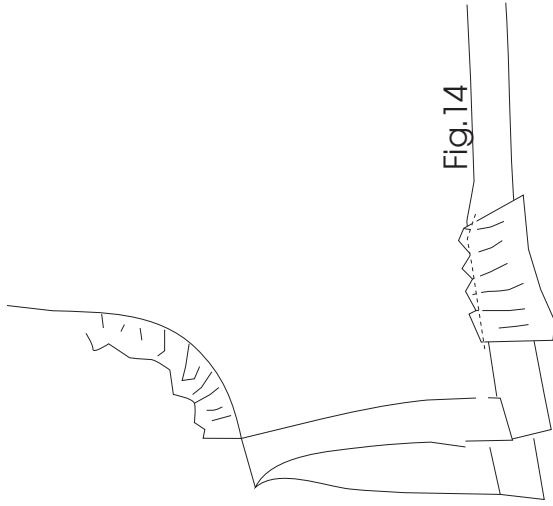


Fig. 14

You have purchased this sewing pattern by Tina Givens Design for personal purposes. No part of this pattern should be duplicated or reproduced for any reason. We want you to create this garment for your own personal use. Do not share this sewing pattern with others. This is the honor code of Sew Tina Givens and Tina Givens, LLC.

tina givens™