

# BLOOM *Dress*

TGP-A4023

WWW.SEWTINAGIVENS.COM



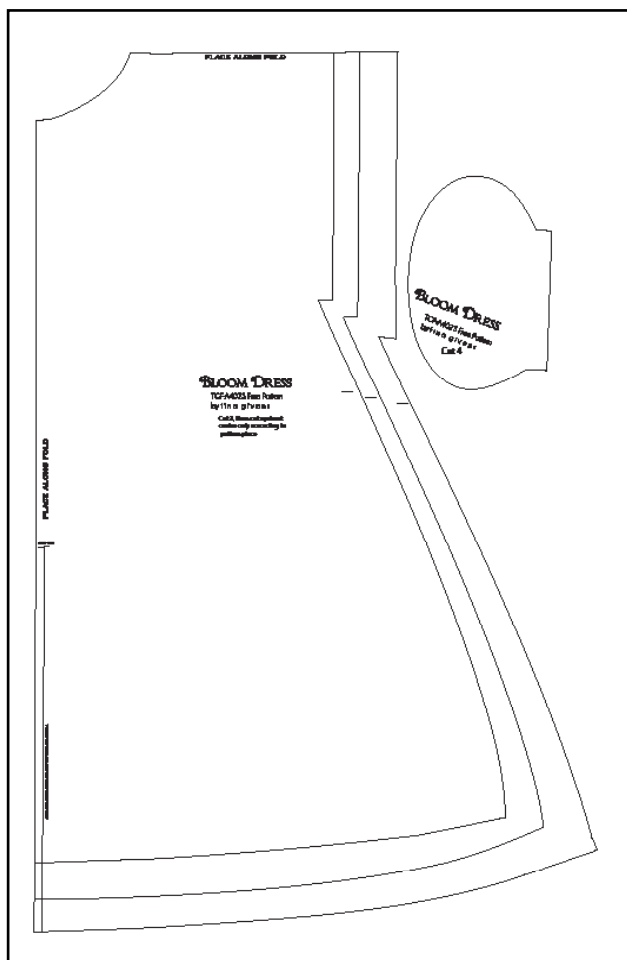
tina givens™

*Sew On*

YOU HAVE DOWNLOADED this perfect sewing pattern by Tina Givens Design for personal purposes. No part of this pattern should be duplicated or reproduced for any reason. We want you to create this garment for your own personal use. Do not share this sewing pattern with others. This is the honor code of Sew Tina Givens and Tina Givens Design.

A THING OF BEAUTY IS A JOY  
FOREVER; IT'S LOVELINESS  
INCREASES; IT WILL NEVER PASS  
INTO NOTHINGNESS.  
JOHN KEATS

All designs and art © Tina Givens. No part of this product may be reproduced in any form. "All designs, art, photography and images are protected by federal copyright law. Designs are not to be reproduced for commercial sale. All rights are reserved.



WWW.SEWTINAGIVENS.COM

QUESTIONS 919.848.9400

OR EMAIL US AT INFO@TINAGIVENS.COM

---

--- F A B R I C ---

WIDTH OF FABRIC 54" LINEN  
OR COTTON VOILE

SMALL ... 2-1/3 YDS  
MEDIUM... 2-3/8 YDS  
LARGE ... 2-5/8 YDS

## SIZING

S.... 2-8 (BUST UP TO 44")

M.... 12-16" ... 48-50"

L .... 18-20 ....60"

©tina givens

1A

1B

2A

2B

Cara 2

Test Measurement Box  
3"x3"  
OR  
7.62cm x 7.62cm

1B

1C

**PLACE ALONG FOLD**

2B

2C

1C

1D

2C

2D

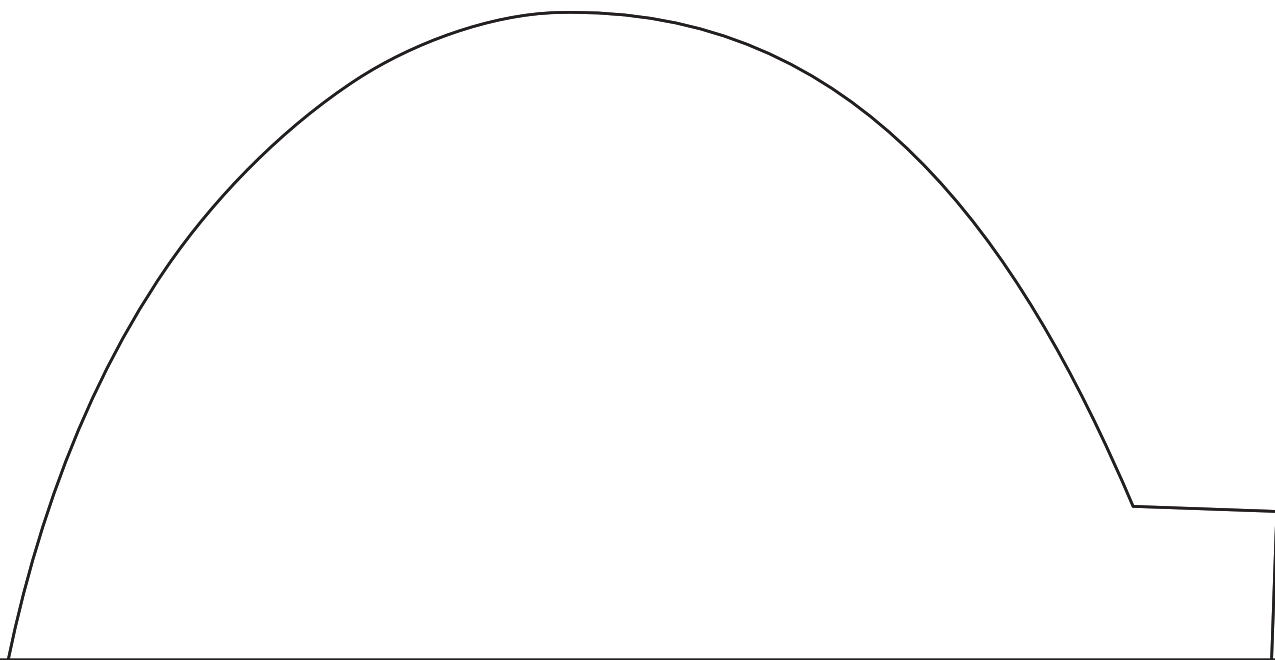
1D

1E

2D

2E

Cara 5



2A

2B

3A

3B

NG FOLD

2B

2C

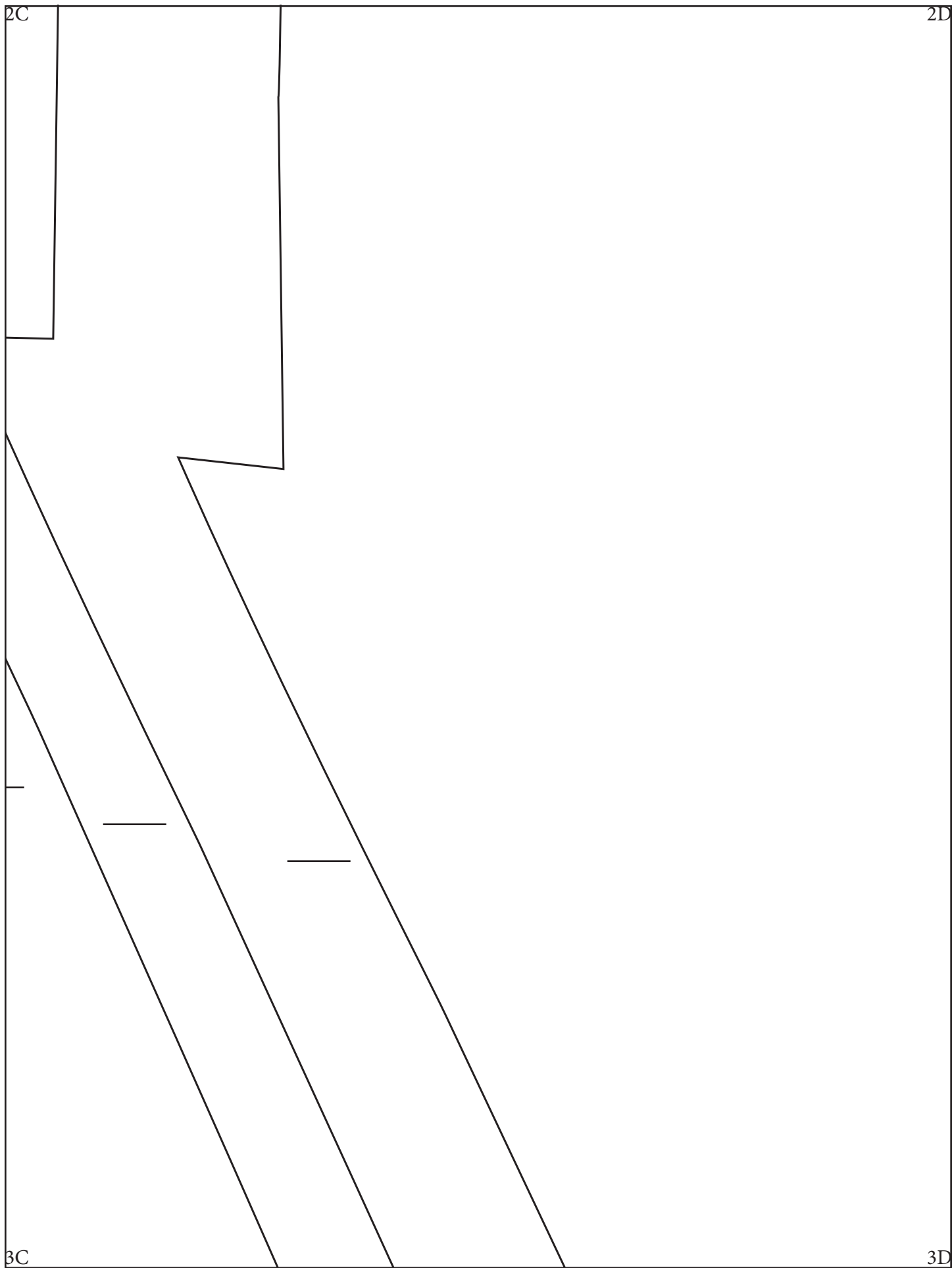
# BLOOM DRESS

TGF-A4023 Free Pattern  
by t i n a g i v e n s

Cut 2, then cut up front  
center only according to  
pattern piece

3B

3C





# BLOOM DRESS

TGF-A4023 Free Pattern  
*by tina givens*

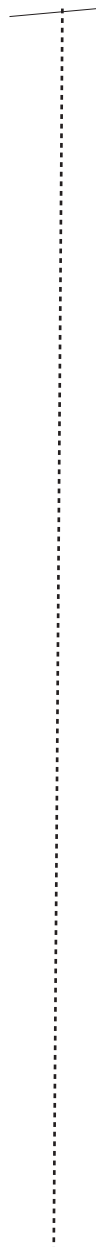
**Cut 4**

3A

3B

PLACE ALONG

STOP LINE



4A

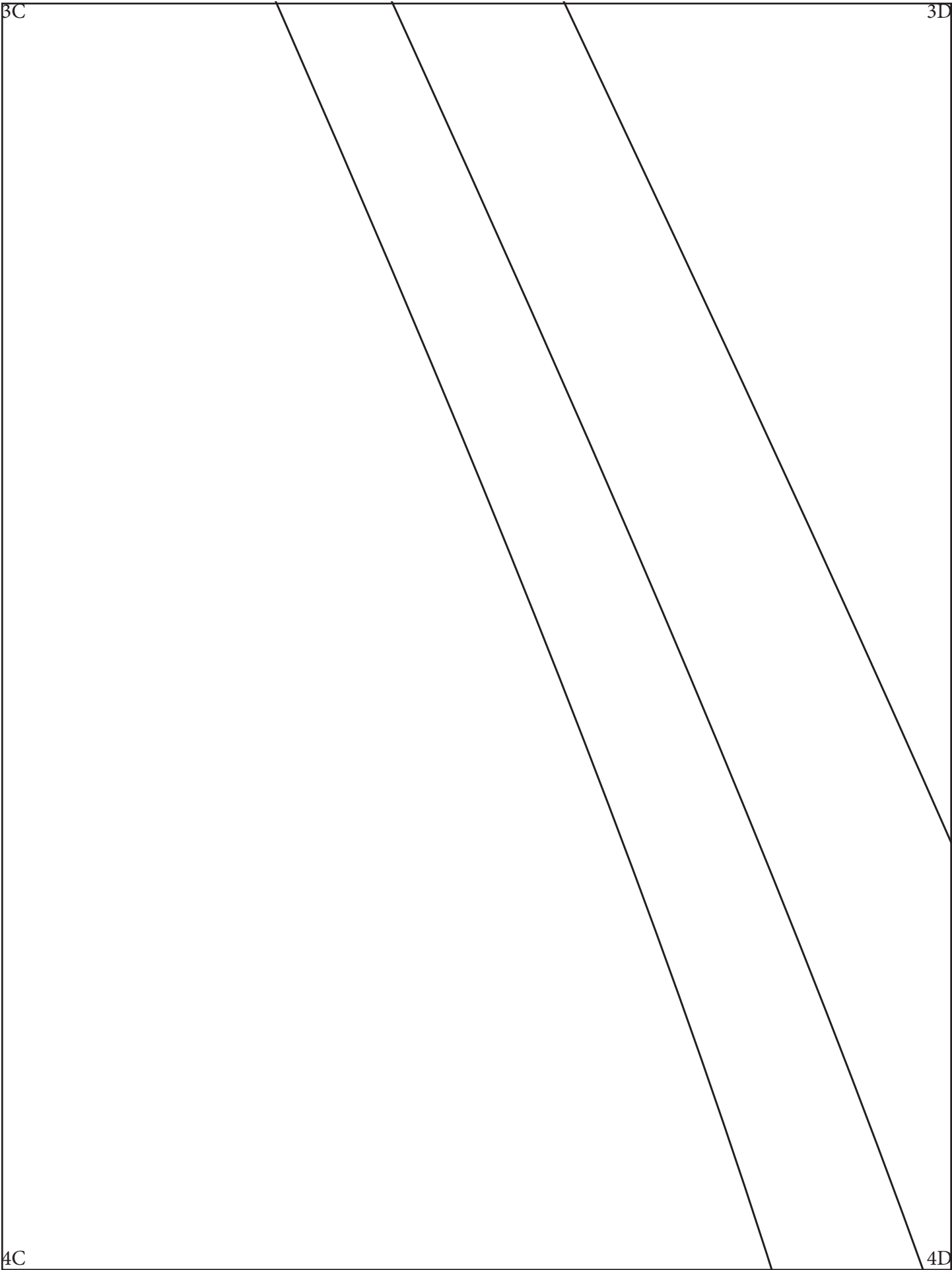
4B

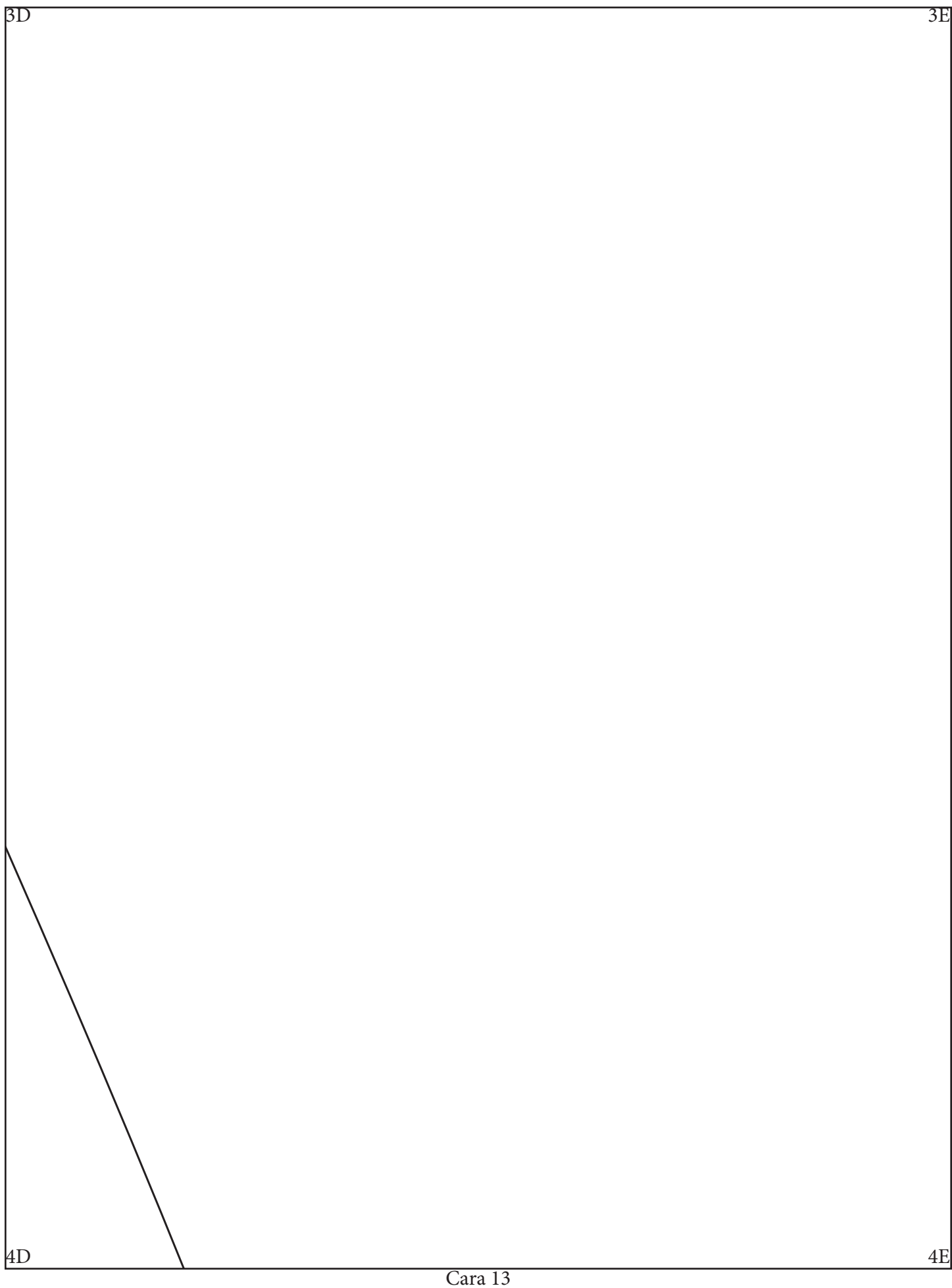
3B

3C

4B

4C





4A

4B

CUT DOWN CENTER LINE FRONT ONLY FOR THE FRONT OPENING.

5A

5B

4B

4C

5B

5C

Cara 15

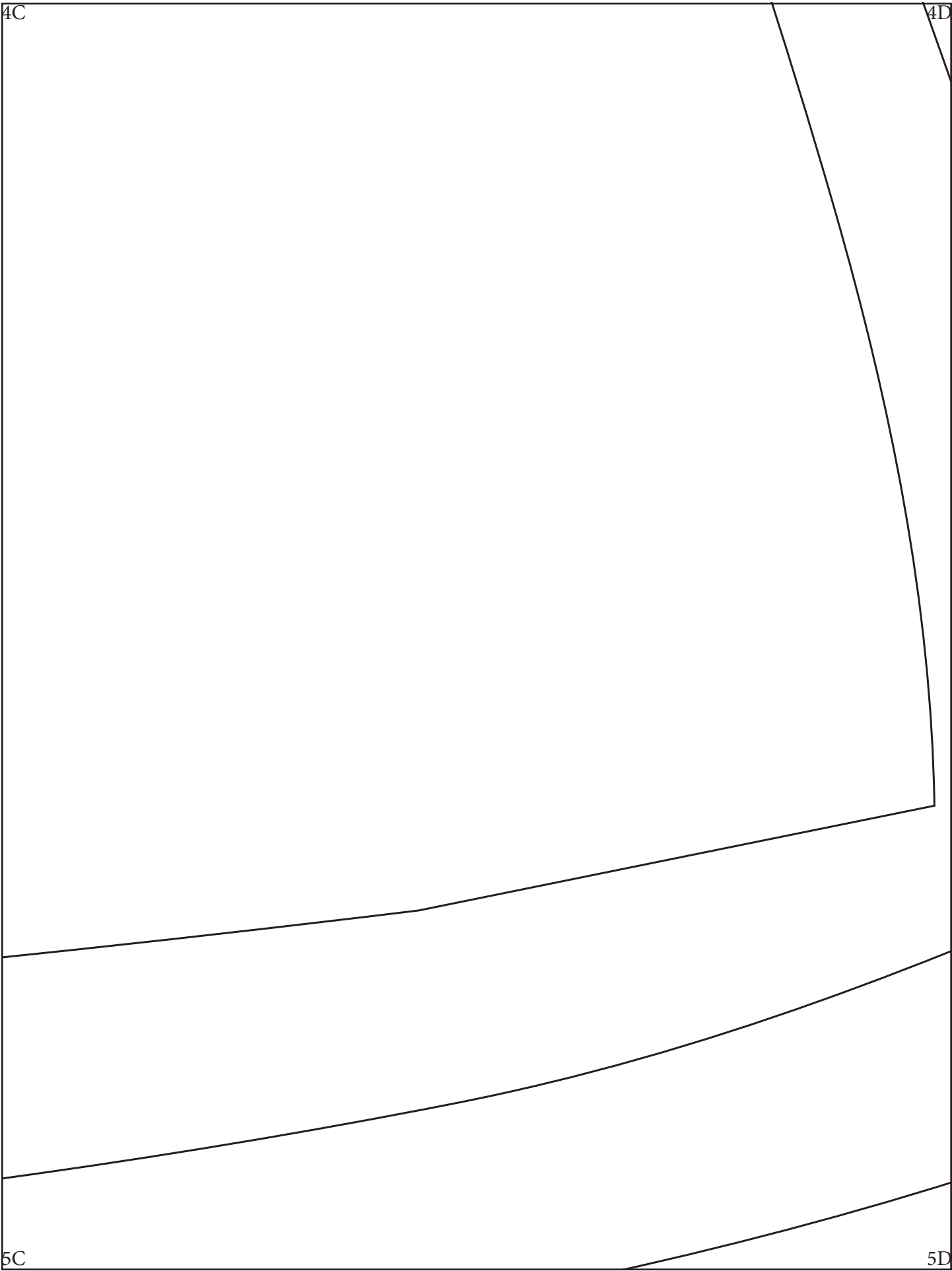
4C

4D

5C

5D

Cara 16





4D

4E

5D

5E

5A

5B

6A

5F

5B

5C



6B

5C

