

18

17

16

15

14

13

12

11

10

9

8

7

6

5

4

3

2

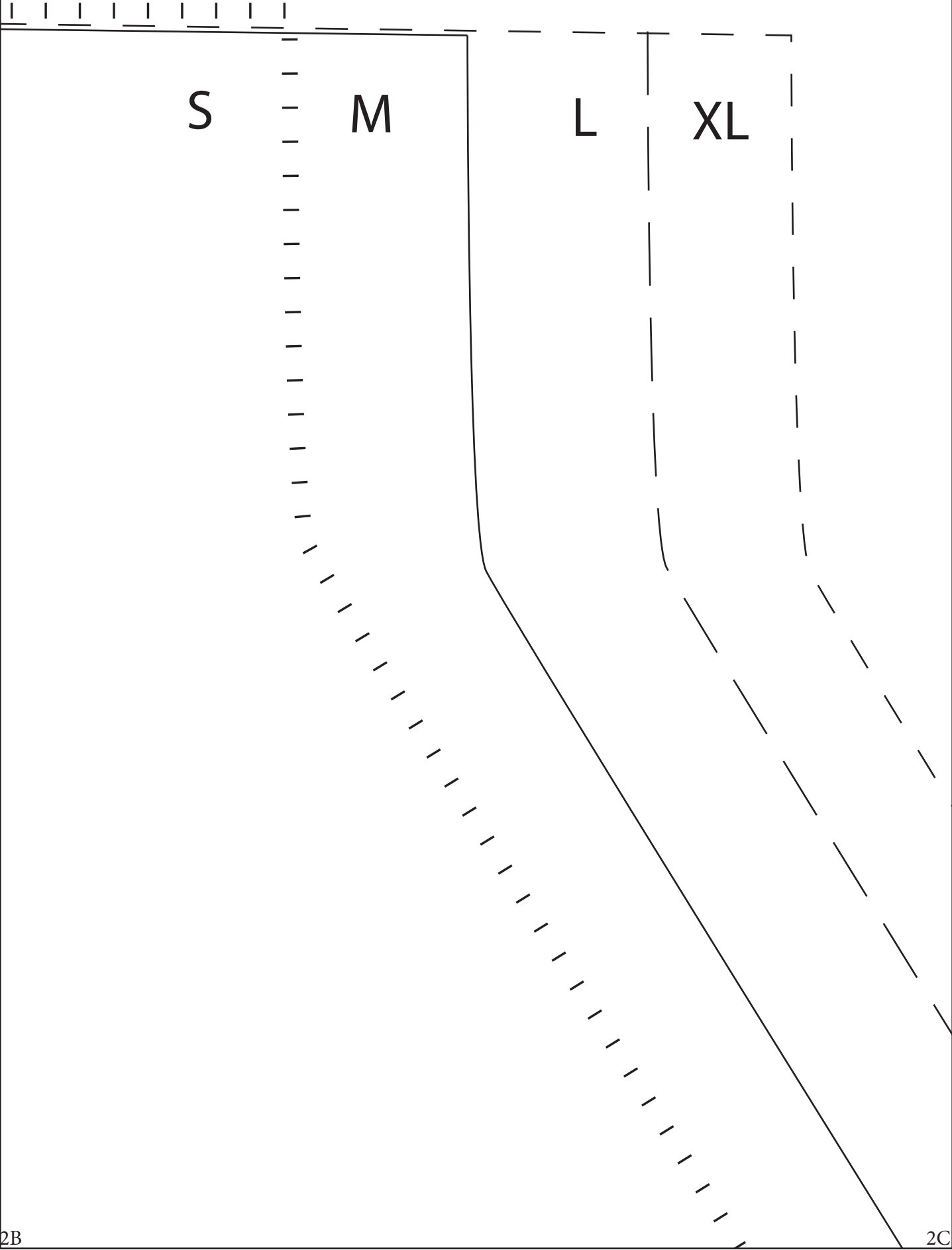
1

0

Test Measurement Box
3"x3"
OR
7.62cm x 7.62cm

1B

1C



S

M

L

XL

2B

2C

Summer 2

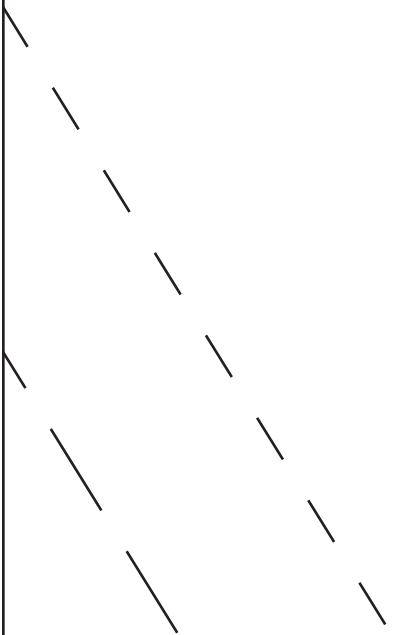
1C

1D

2C

2D

Summer 3



SUMMER PINAFORE

TG-A7037

t i n a g i v e n s

POCKET

CUT 1 FABRIC 1

CUT 1 FABRIC 2

2A

2B



LONG THE FOLD ---

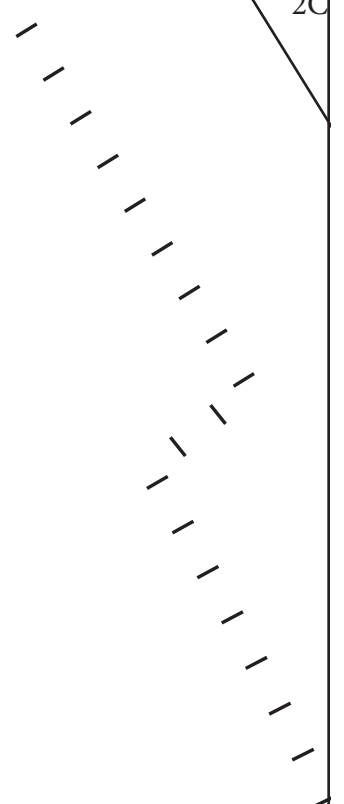
3A

3B



2B

2C



SUMMER PINAFORE

TG-A7037

t i n a g i v e n s

3B

3C

2D

2E

SUMMER PINAFORE
TG-A7037
pocket patch
cut 1

3D

3E

3A

3B

-- PLACE AI

4A

4B

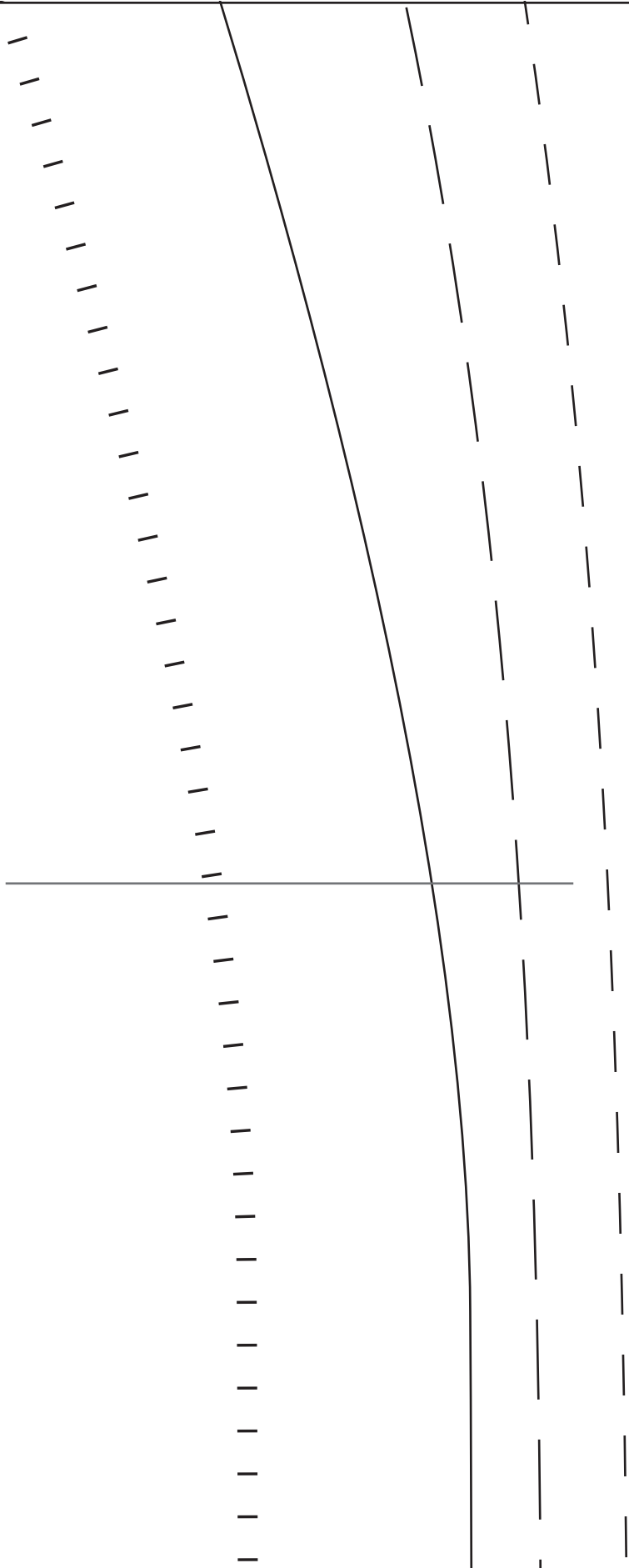
PINAFORE PANEL

front and back

cut 2

3C

3D



4C

4D

Summer 11

SUMMER PINAFORE

TC-A7037

t i n a g i v e n s
STRAPS AND HEMLINE
CUT 4 -- FABRIC 1

SUMMER PINAFORE

TC-A7037

t i n a g i v e n s
HEM TRIM
CUT 2 -- FABRIC 2



TG-A7037

SUMMER

Pinafore

Pattern Preparation

WE CHOOSE TO PRINT OUR PATTERNS ON HIGH QUALITY WHITE PAPER STOCK TO ENSURE YOU HAVE LONG USE.

PREPARE YOUR PATTERN -

WE TRY TO KEEP ALL PATTERN PIECES INTACT, BUT ON OCCASION WE NEED TO CREATE JOIN LINES. SIMPLY CUT AND TAPE THE JOIN LINES TOGETHER IF NECESSARY. IT'S THAT SIMPLE.

ONCE ALL TAPED TOGETHER SELECT THE SIZE YOU WISH TO MAKE, SEE OUR SIZE CHART AND CUT OUT YOUR PAPER PATTERN PIECES.

S I Z I N G			
	US	UK	EUR
S....	2-6	4-10	34-38
M.....	8-10	12-14	40-22
L.....	12-14	16-18	44-46
XL....	16-22	20-26	48-54

Materials

SUMMER PINAFORE IS A PLAYFUL LAYERING PIECE TO BE WORN OVER ALMOST ANYTHING. WEAR OVER PLINKA PANT AND A LITTLE TOP; OVER A SUGAR SLIP OR EVEN MIA OR ETRA DRESS....

(SHOWN WITH PLINK PANTS SEE SEWTINAGIVENS.COM FOR FREE PATTERN)

FABRIC:
ALL SIZES
44" OR 54" WIDE FABRIC

FABRIC 1 2-2/3Y OR 2.5M
FABRIC 2 2/3 Y OR 5/8M
FABRIC 3 SCRAPS FOR TRIM
TWO LARGE BUTTONS 1" TO 1.5"

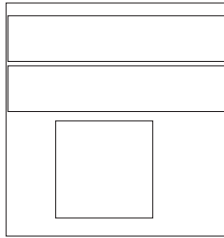
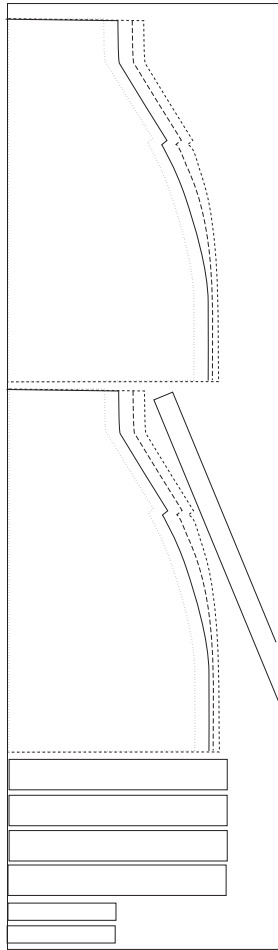
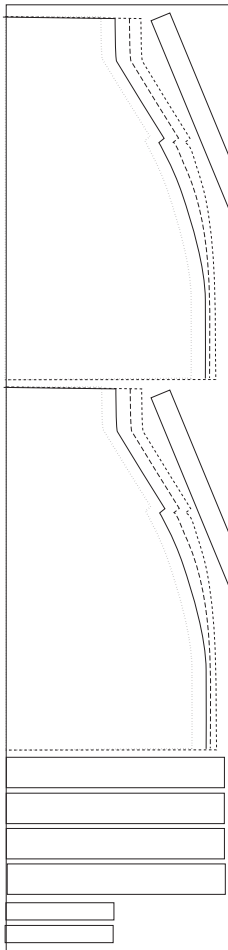
Y = YARDS + M = METERS

© tina givens

44" WIDE

54" WIDE

FABRIC 2



Cutting

ALL OF OUR PATTERNS INCLUDE THE SEAM ALLOWANCE,

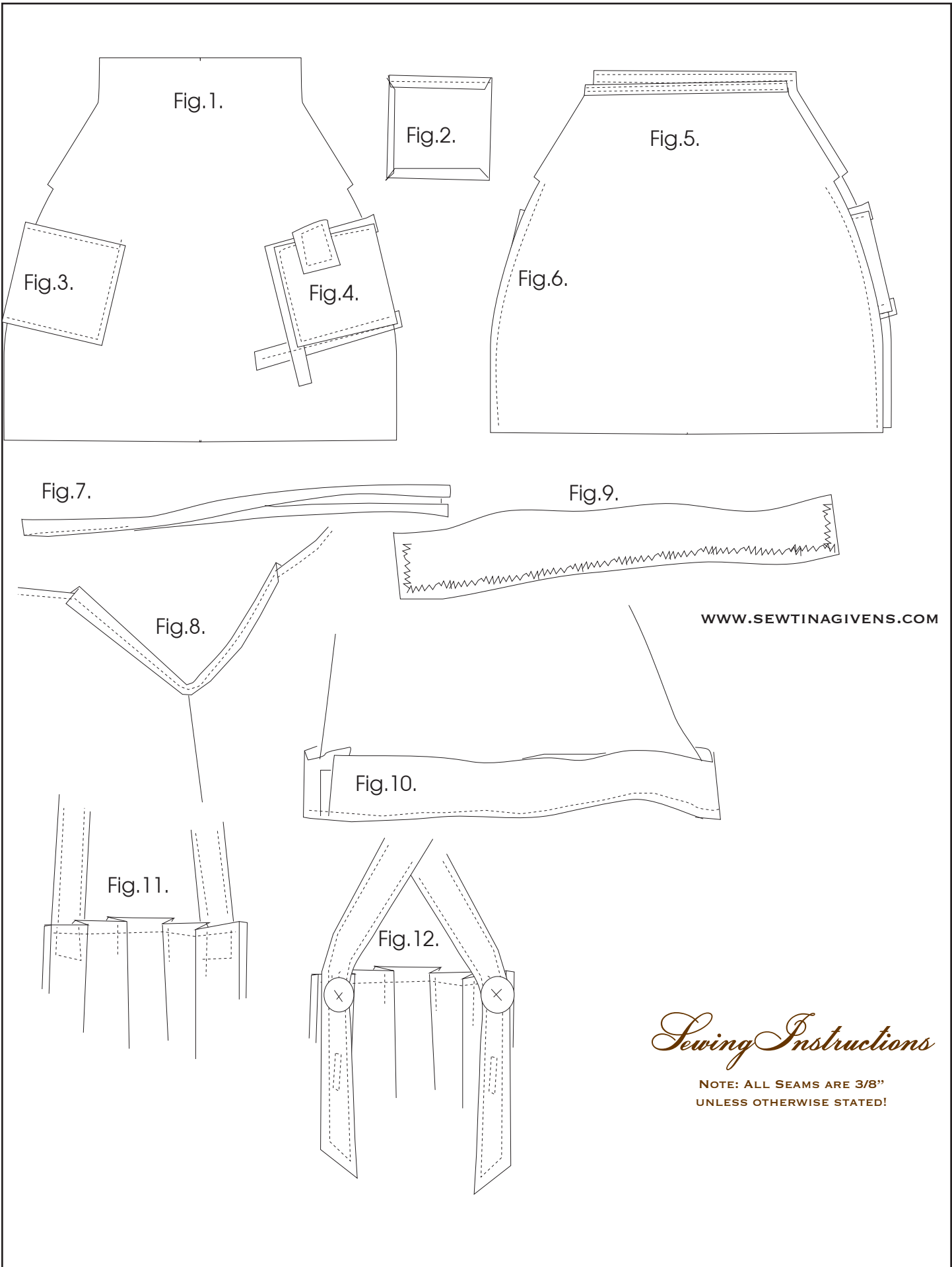
FABRIC 1 -- Cut two pinafore panels as shown on the fold of the fabric; cut two bias binding strips 2" wide for the armholes - need approximately 25" long per strip. Cut 4 strips as pattern indicates; and two strips 1" wide for trim -- approximately 24" in length. Cut one pocket piece.

FABRIC 2 -- Cut one pocket panel, and two hem strips according to the pattern piece.

FABRIC 3 -- Optional trim pieces, cut one square 3" or 8cm; and any other smallish pieces in contrasting fabrics for your Pinafore.

tina givens™

You have purchased this sewing pattern by Tina Givens Design for personal purposes. No part of this pattern should be duplicated or reproduced for any reason. We want you to create this garment for your own personal use. Do not share this sewing pattern with others. This is the honor code of Sew Tina Givens and Tina Givens Design.



WWW.SEWTINAGIVENS.COM

Sewing Instructions

NOTE: ALL SEAMS ARE 3/8"
UNLESS OTHERWISE STATED!

- REFER TO THE DIAGRAMS ABOVE. One of the panels will be your front for the summer pinafore, see fig.1. We will be adding one pocket in fabric 1 on right side (fig.3.) and patch and trim on the other side (fig.4.). First prepare the pocket in fabric 1 - fold the edges under 1/4" and again 1/4" and press (leaving one edge raw as shown) FIG.2. Stitch across the top edge.
- Pin this pocket in place along the side edge of the pinafore as shown in fig.3. Stitch right side and bottom edge of pocket to secure.
- Pin the 'pocket' square piece you precut in FABRIC 2, as shown in fig.4. Along the edge of the pinafore, stitch in place along each edge as shown. This will not be a pocket but for show! Pin a length of the 1" strips you precut as shown, framing the square patch, and stitch in place. Stitch the 'optional' patch in fabric 3 as shown.
- Place the panel right sides facing onto the second pinafore panel as shown in fig.5. Match side seams and stitch as shown in fig.6. Roll the top edge onto the wrong side 1" and again 1" and press. Stitch along the top edge 1/8" from folded edge; and stitch at fold below. See fig.5. Repeat for other panel.
- Prepare the straps by using two of the pre cut strips in fabric 1. Fold long edges onto the wrong side 1/4" and then fold the strip in half. Press, see fig.7. Stitch the strap along its length. Set aside.
- Using the bias cut strips 2" wide, fold the binding over the raw edges of the armholes as shown in fig.8. And stitch in place. This will give you a raw edge. Optionally, you can bind the armholes traditionally, with a finished edge.
- Fig.9. Zigzag the side edges and bottom edge of the two remaining strips in fabric 1; and the two strips in fabric 2. Zigzag 1/4" from the edge to secure and prevent fraying.
- Fig.10 Pin the narrower strips in fabric 1 right sides facing around the bottom edge of the pinafore. The raw edge or top edge of the strips should be placed onto the bottom raw edge of the pinafore. Then pin the strips in fabric 2 over the first strips, overlapping one strip about 1-2" to the next. Stitch strips onto the hemline.
- Fig.11. Make pleats about 2" in depth across the top edge of the back and front pinafore panels as shown. The width of this should now be about 12", but you can choose how wide or narrow you'd prefer your pinafore to sit on your chest and at the back.
- Baste stitch the pleats in place.
- Pin the two straps in position on the inside front of the pinafore as shown in fig.11. Tuck under the raw edges and stitch in place.
- Cross over the straps at the back or you can choose not to -- pin the straps at the back as shown in fig.12 and mark where you'd like them to sit on your shoulders. Adjust until you are happy. Make large button holes for your buttons. Stitch the buttons in place onto the pinafore.