

1A

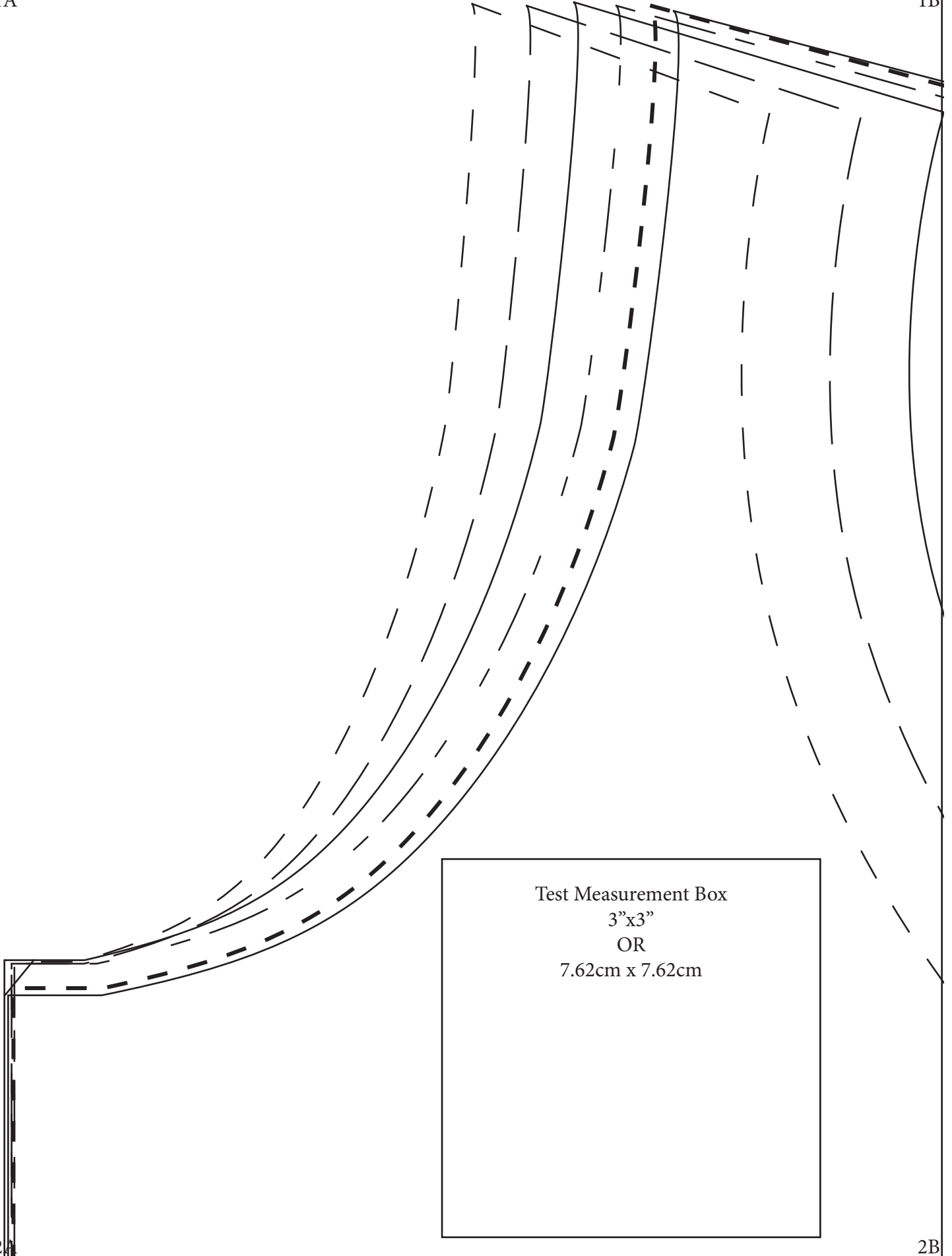
1B

2A

2B

Emma 1

Test Measurement Box  
3"x3"  
OR  
7.62cm x 7.62cm

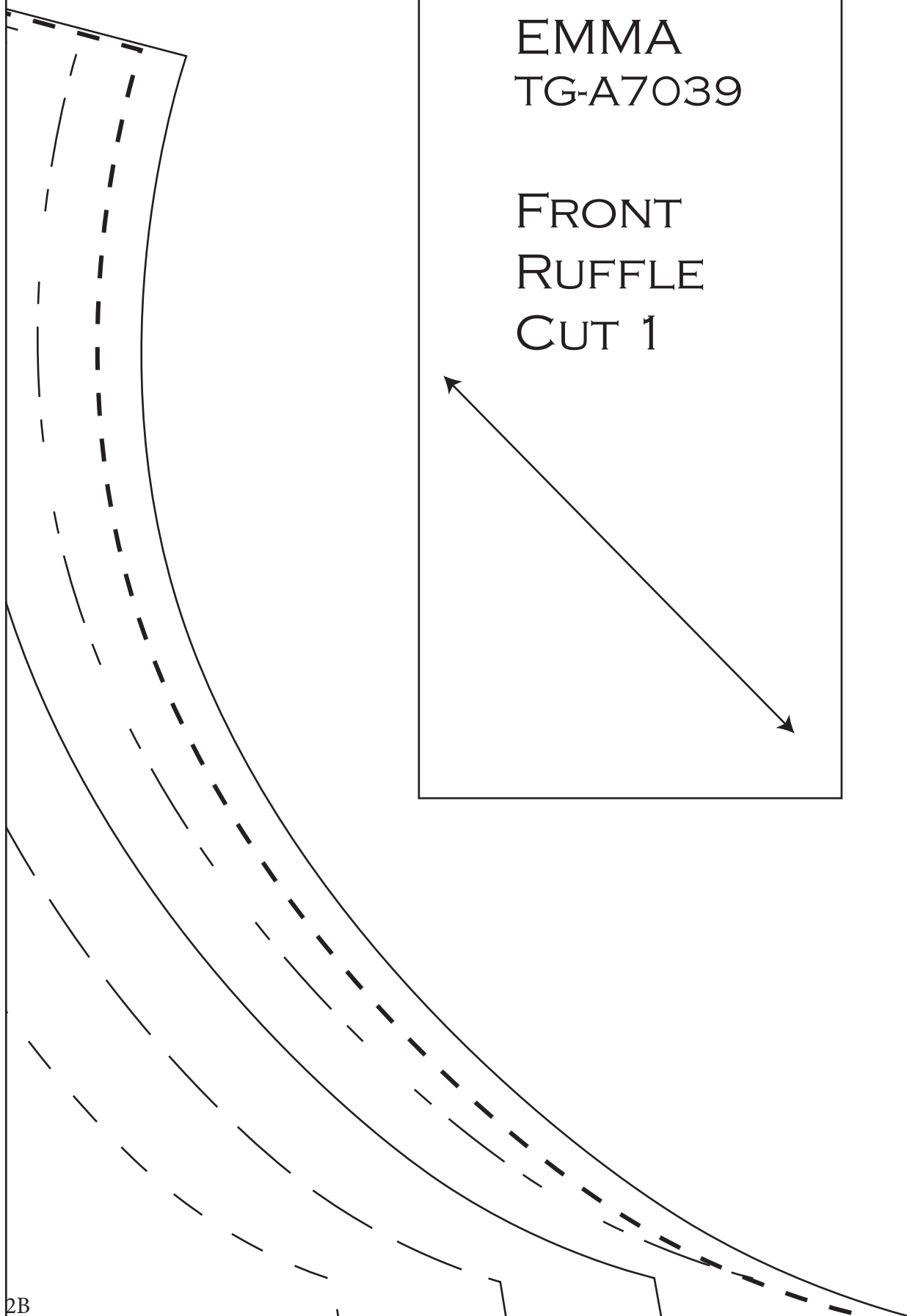
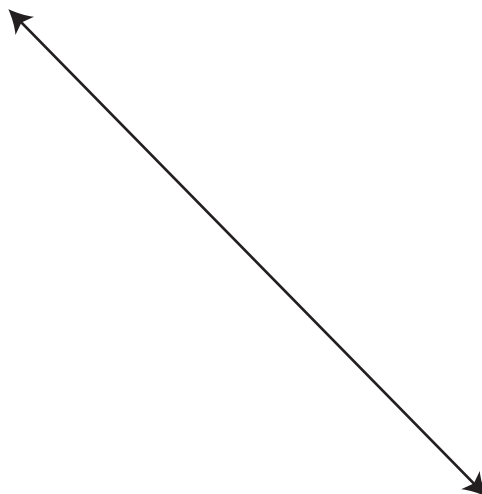


1B

1C

EMMA  
TG-A7039

FRONT  
RUFFLE  
CUT 1



2B

2C

Emma 2

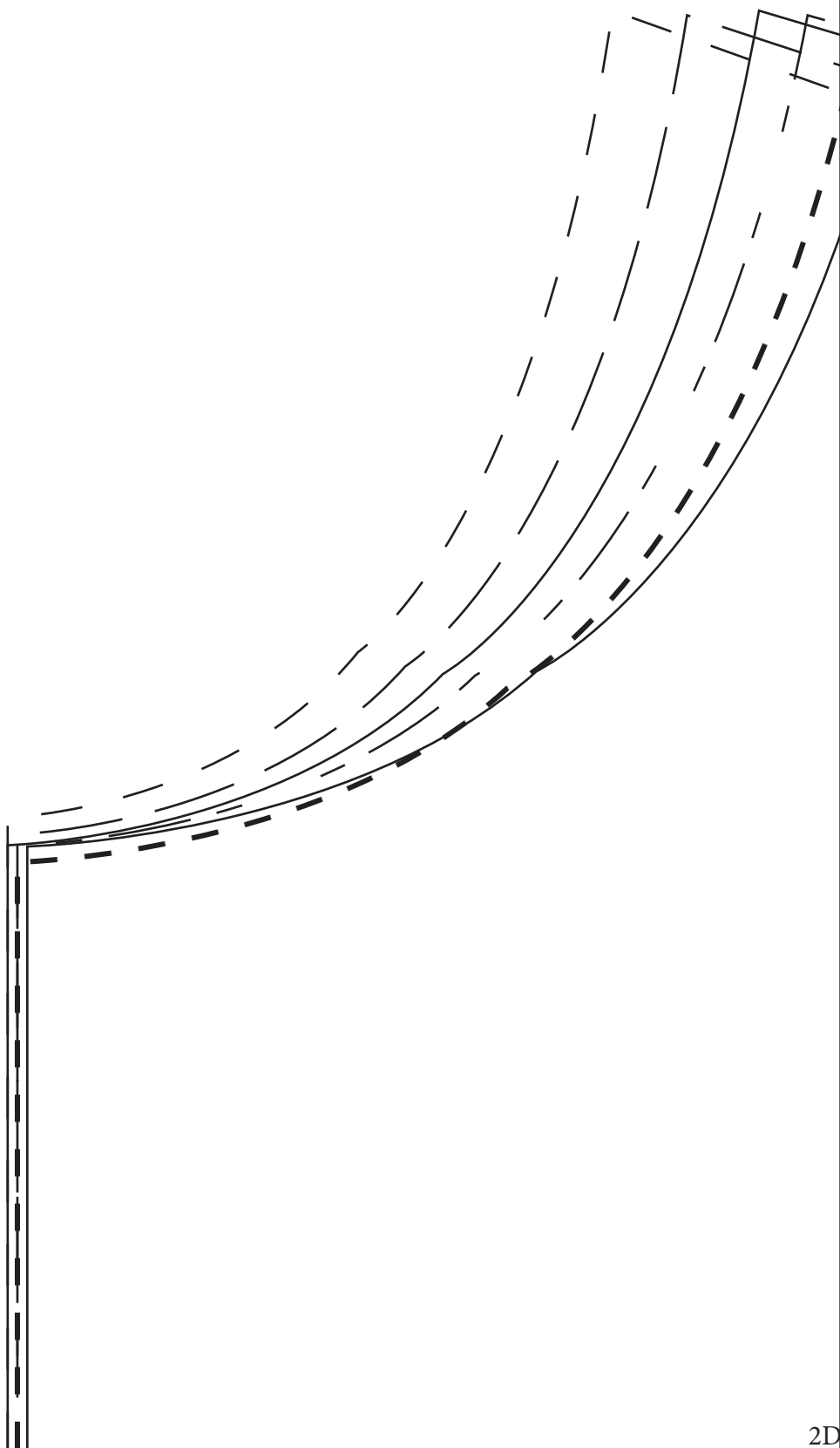
1C

1D

2C

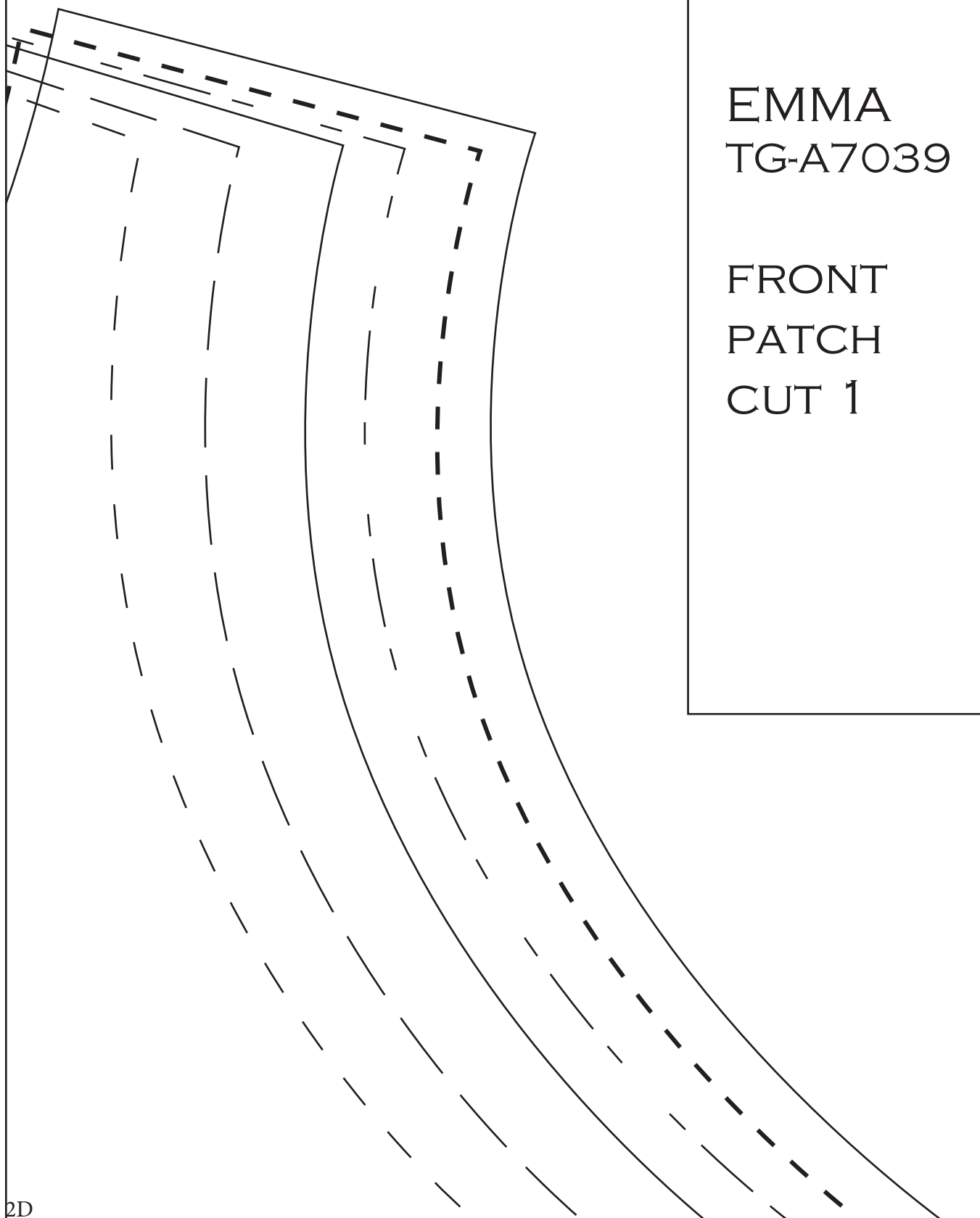
2D

Emma 3



ID

IE



EMMA  
TG-A7039

FRONT  
PATCH  
CUT 1

2D

2E

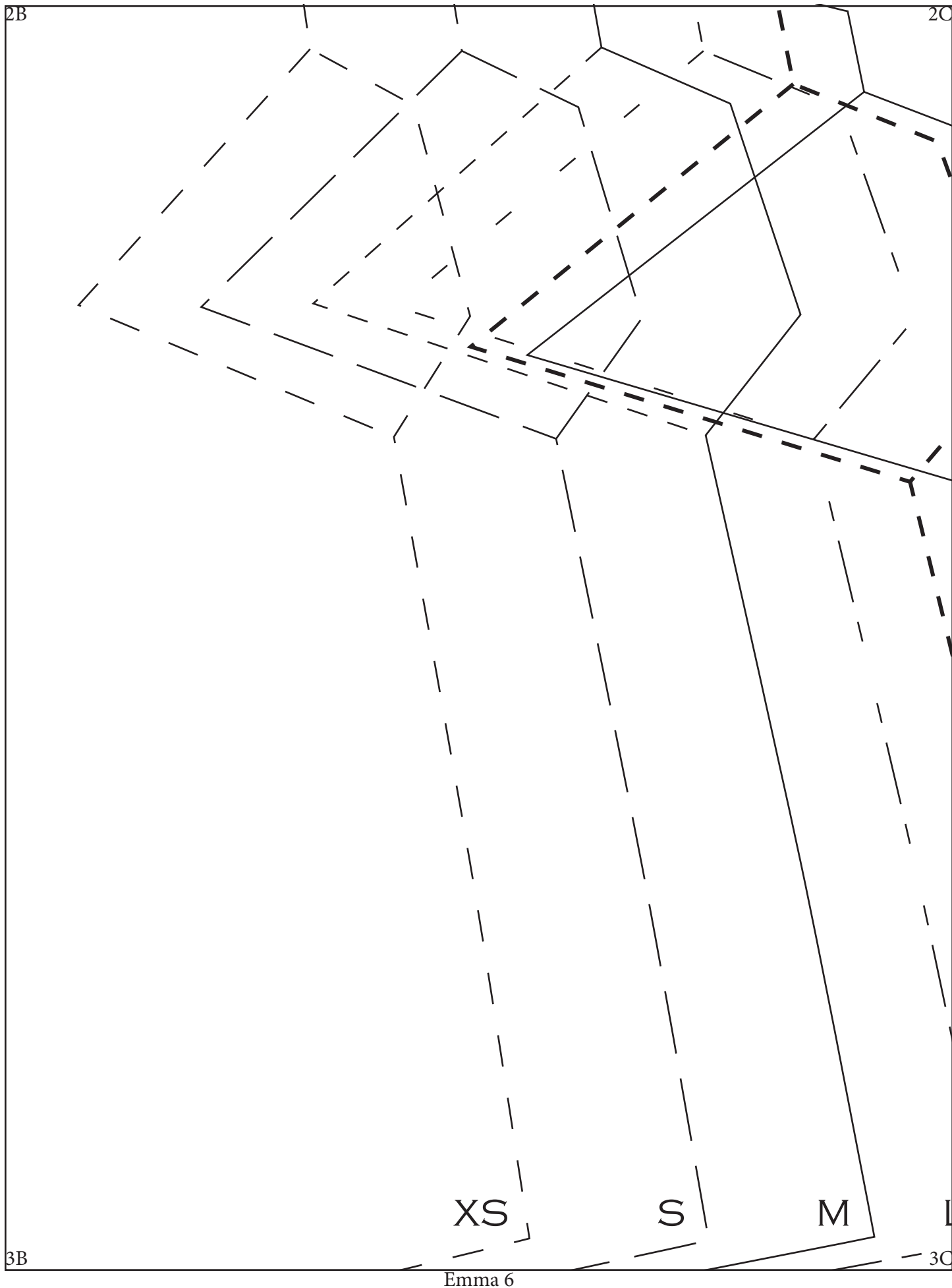
# EMMA

## TG-A7039

### FRONT BODICE CUT 1

PLACE ON THE FOLD OF THE FABRIC





2C

2D

# EMMA

## TG-A7039

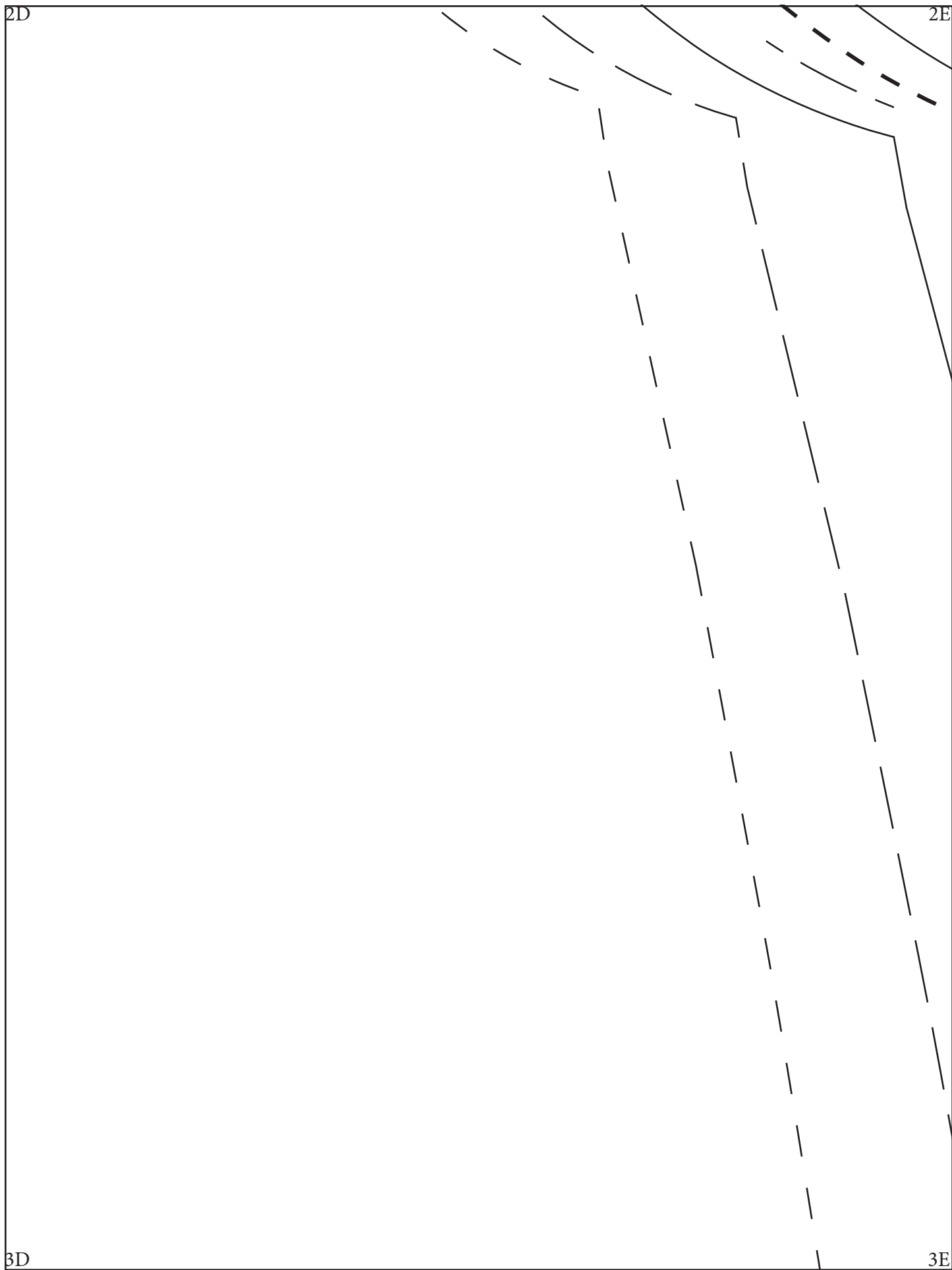
BACK  
CUT 1



PLACE ON THE FOLD OF THE FABRIC

3C

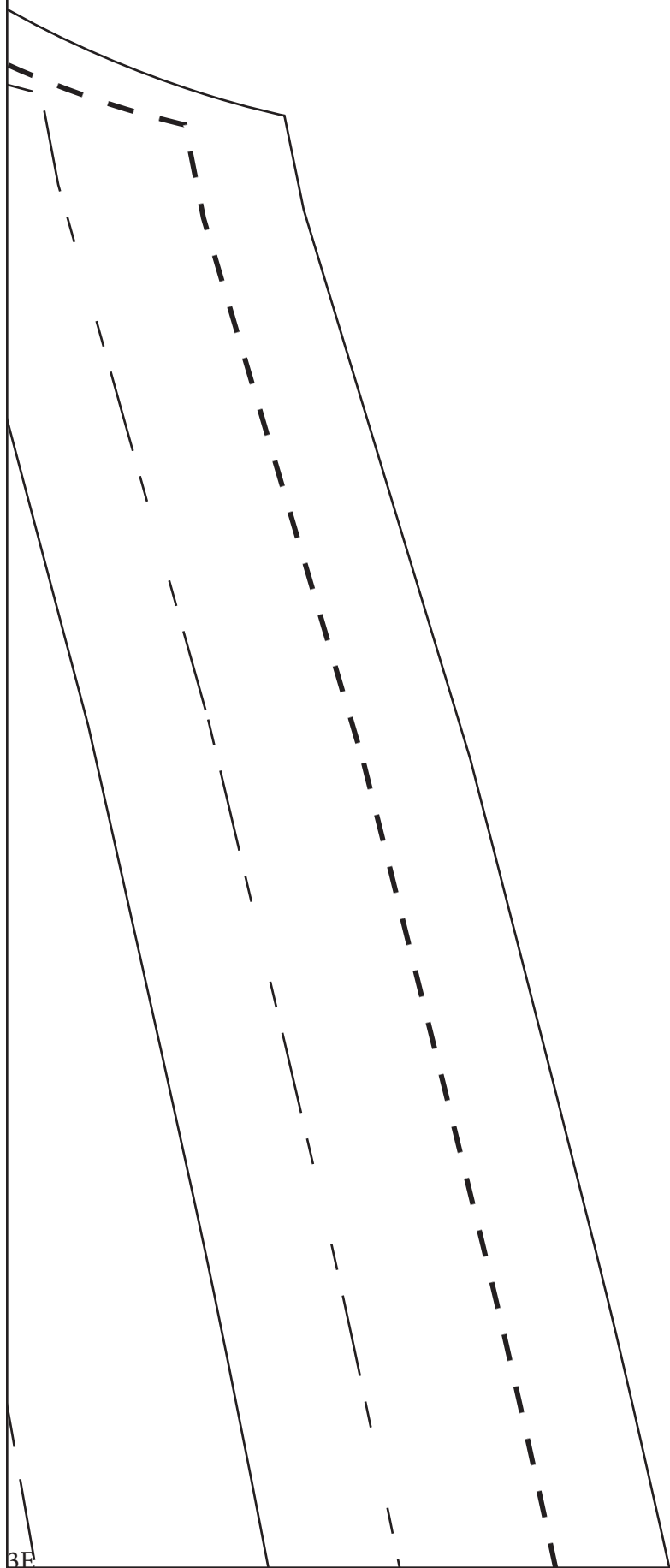
3D





2E

2F



PLACE ON THE FOLD OF THE FABRIC

3E

3F

2F

2G

EMMA  
TG-A7039

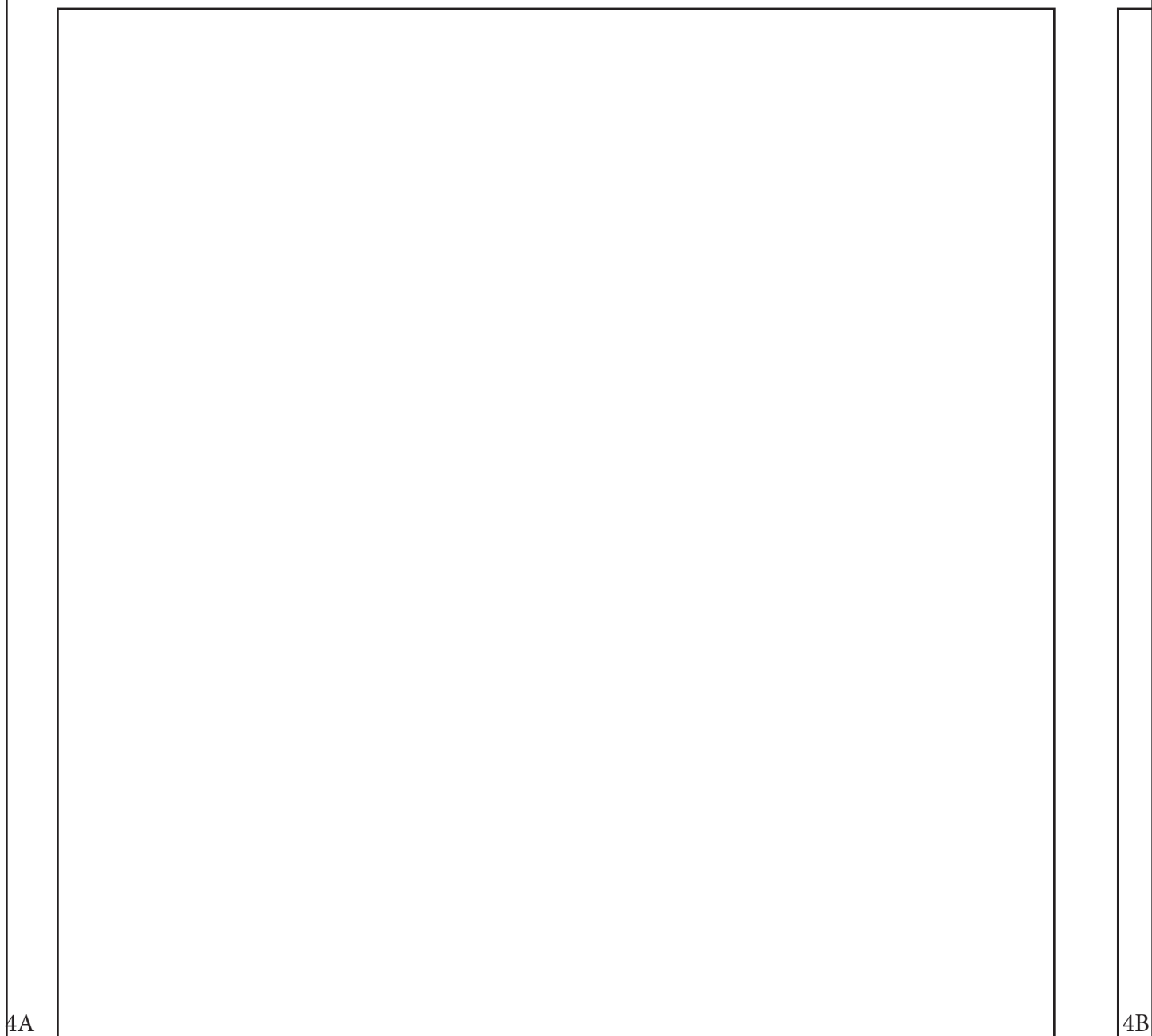
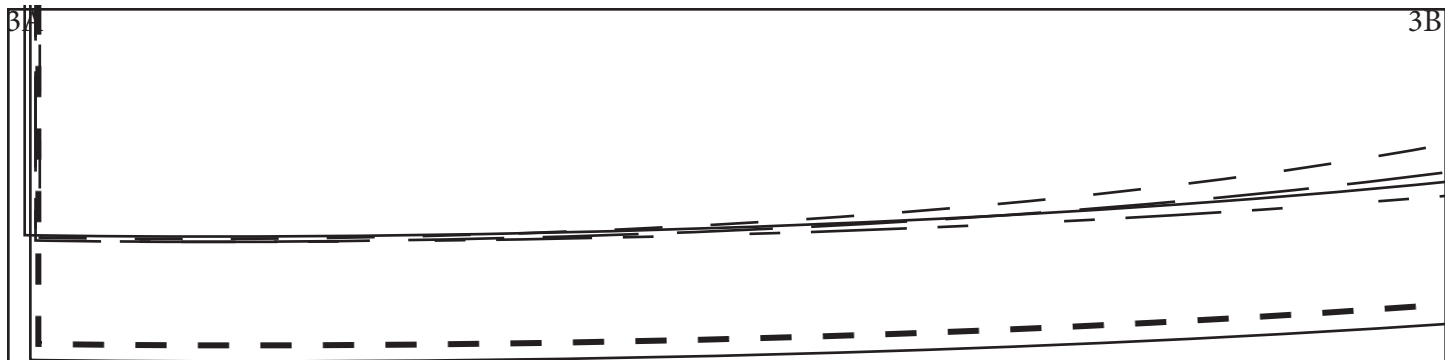
POCKET  
CUT 2

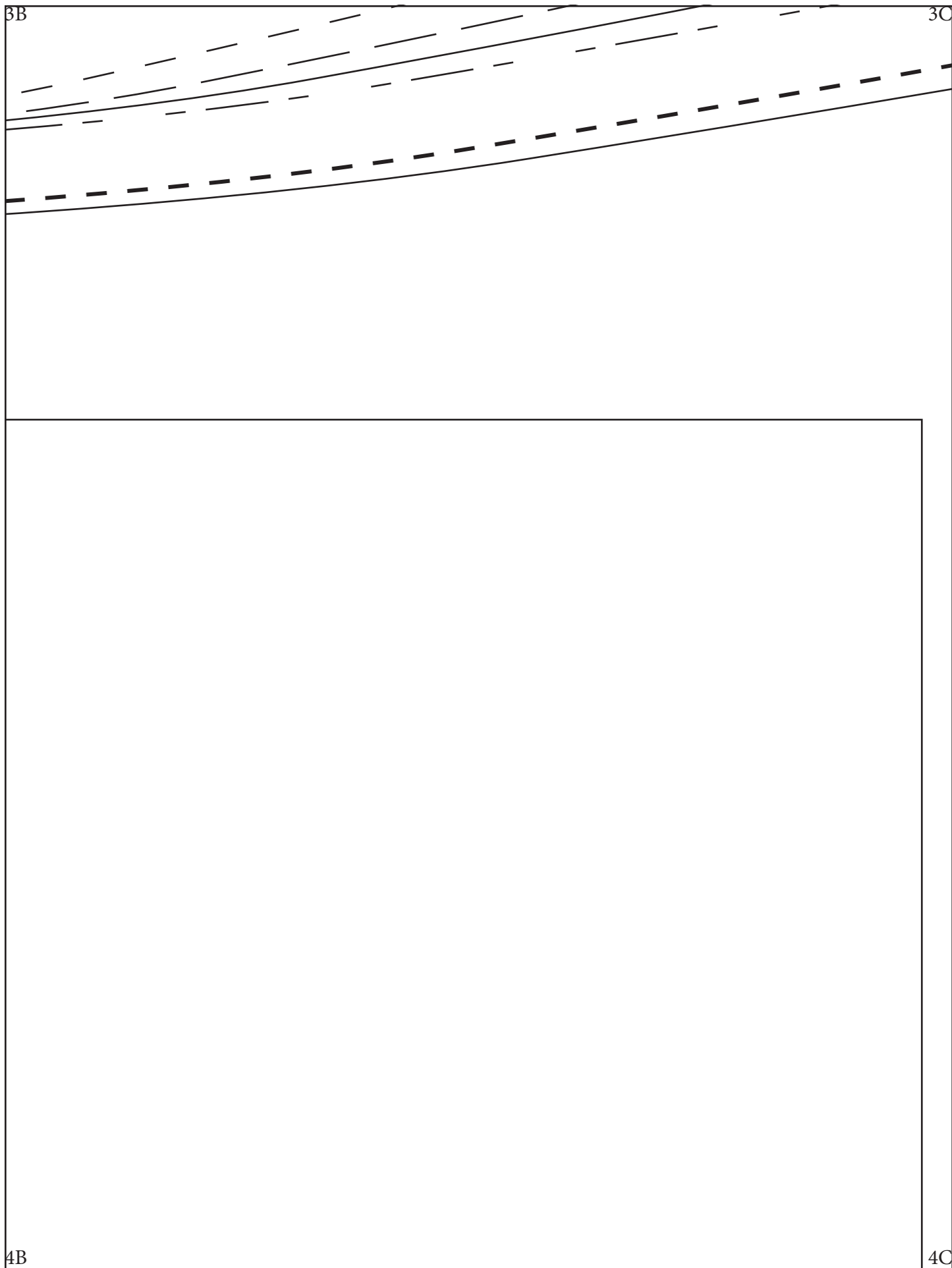


3F

3G

Emma 10





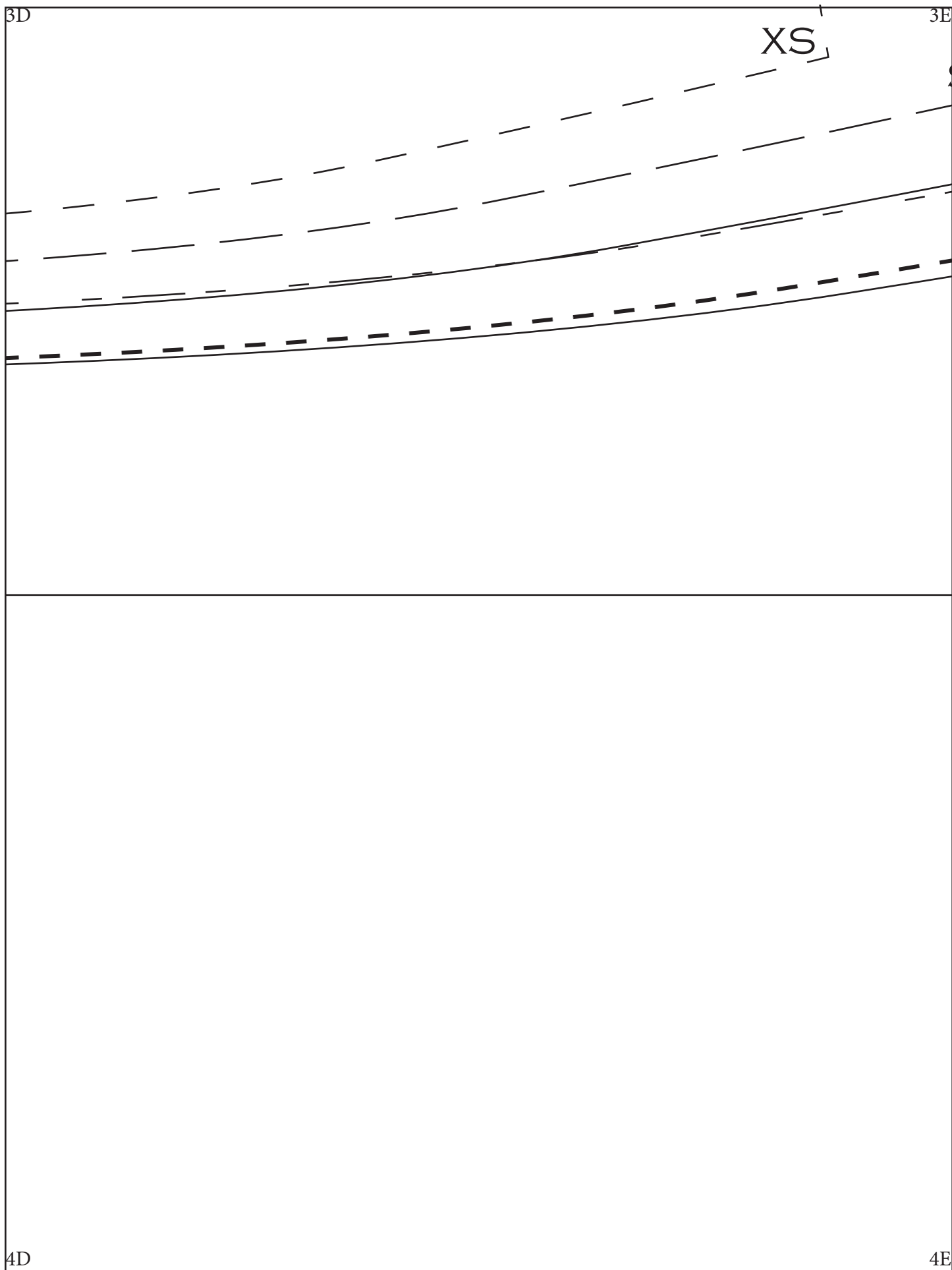
3C

XL 1 2X

3D

4C

4D



<div data-bbox="89 86 927 504"> <div>3E</div> <div>S</div> <div>M</div> <div>L</div> <div>XL</div> <div>2X</div> </div>	<div data-bbox="927 86 1526 982"> <div>3F</div> </div>
<div data-bbox="89 982 927 1999"> <div>4E</div> </div>	<div data-bbox="927 982 1526 1999"> <div>4F</div> </div>

3F

3G

4F

4G



EMMA  
TG-A7039  
SKIRT PANEL2  
CUT 1

EMMA  
TG-A7039  
SKIRT PANEL 3  
CUT 1

4C

EMMA  
A7039

SKIRT PANEL 4  
CUT 1

PLACE ON THE FOLD OF THE FABRIC

4D

5C

5D

# EMMA

## TG-A7039

SKIRT PANEL 1  
CUT 2

4E

4F

5E

5F

4F

4G

5F

5G

5A

5B

PLACE ON THE FOLD OF THE FABRIC

6A

5F

5B

5C

PLACE ON THE FOLD OF THE FABRIC

6B

5C



5C

EM  
TGA

F

5D

FOLD  
I  
I

6C

5D

5D

5E

6D

5E

5E

5F

6E

5F

5F

5G

6F

5G

TG-A707039

# EMMA

Dress

## *Pattern Preparation*

WE CHOOSE TO PRINT OUR PATTERNS ON HIGH QUALITY  
WHITE PAPER STOCK TO ENSURE YOU HAVE LONG USE.

PREPARE YOUR PATTERN -

WE TRY TO KEEP ALL PATTERN PIECES INTACT, BUT ON OCCASION  
WE NEED TO CREATE JOIN LINES. SIMPLY CUT AND TAPE THE JOIN  
LINES TOGETHER IF NECESSARY. IT'S THAT SIMPLE.

ONCE ALL TAPED TOGETHER SELECT THE SIZE YOU WISH TO MAKE,  
SEE OUR SIZE CHART AND CUT OUT YOUR PAPER PATTERN PIECES.

S I Z I N G			
	US	UK	EUR
XS....	2	4-6	34
S....	4-6	8-10	36-38
M.....	8-10	12-14	40-22
L.....	12-14	16-18	44-46
XL....	16-18	20-22	48-50
2X...	20-22	24-26	52-54

---

## *Materials*

EMMA IS A DELIGHTFUL FROCK DRESS WITH  
TWO TONE SURPRISES... LOVE THIS DRESS

(SHOWN WITH PLINK PANTS SEE SEWTINAGIVENS.COM FOR FREE PATTERN)

FABRIC:  
ALL SIZES

44" WIDE

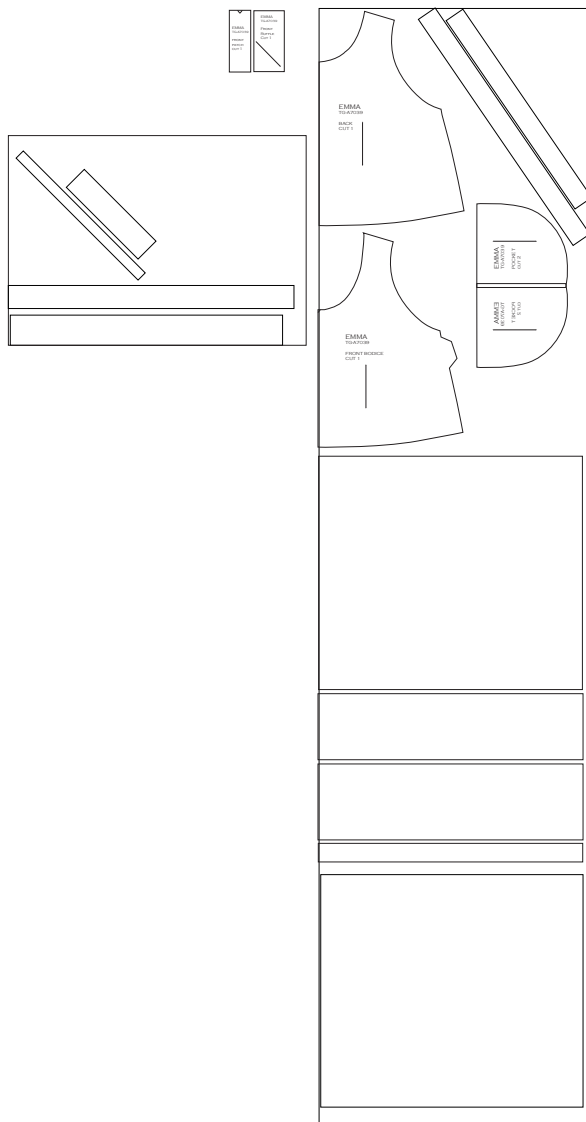
54" WIDE

FABRIC 1..... 3.5Y OR 3.25M  
FABRIC 2..... 3/4 Y OR 2/3M

3.25Y OR 3M  
3/4 Y OR 2/3 M

FABRIC 3 -- VELVET 2X6" OR 5X15CM  
FABRIC 4 - RUFFLE 3X6" OR 7X15CM

## Cutting



ALL OF OUR PATTERNS INCLUDE THE SEAM ALLOWANCE,

Fabric 1 - cut the bodice pieces out, front and back, two pocket pieces and bias binding strips cut on the diagonal as shown for the neckline. This should be 2" (or 5cm) wide.

Cut two skirt panels 24" (61cm) in length x the width of the fabric. Cut one strip the width of the fabric by 6" (15cm) deep; and an 8" (20cm) wide strip by the width of the fabric, cut another 2" (5cm) wide by the width of the fabric - see diagram.

Fabric 2 - Cut 2" (5cm) wide strip by the width of the fabric and 3" (7cm) x the width of the fabric; cut bias cut strip x 1" (2.5cm) wide as shown for the pocket, and two rectangles on the bias as shown - measuring 12"x2.5" (30cmx6cm)

Fabric 3 - Velvet scrap 2"x6" (5x15cm)

Fabric 4 - Silk organza or something fun 3"x6" (7x15cm)

--

tina givens™

You have purchased this sewing pattern by Tina Givens Design for personal purposes. No part of this pattern should be duplicated or reproduced for any reason. We want you to create this garment for your own personal use. Do not share this sewing pattern with others. This is the honor code of Sew Tina Givens and Tina Givens Design.

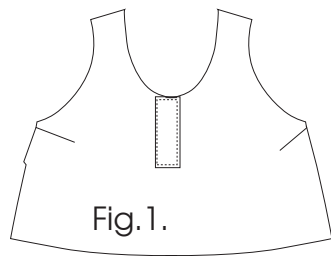


Fig.2.

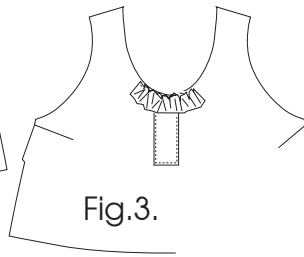
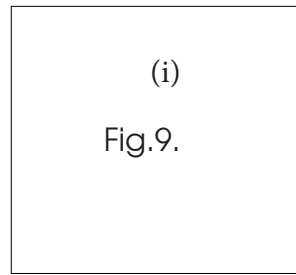
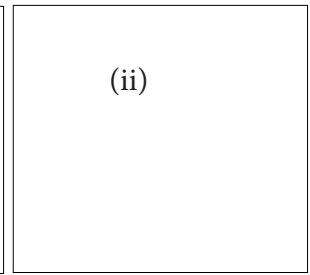


Fig.3.



(i)  
Fig.9.



(ii)

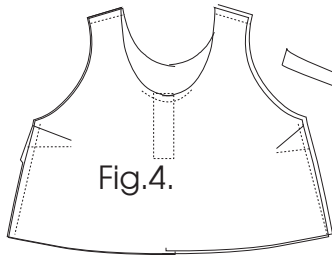


Fig.4.



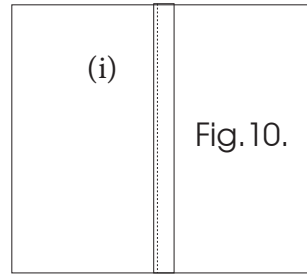
Fig.5.



Fig.6.



Fig.7.



(i)

Fig.10.

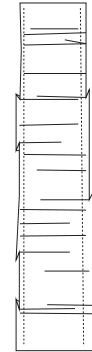


Fig.11.



Fig.8.

WWW.SEWTINAGIVENS.COM

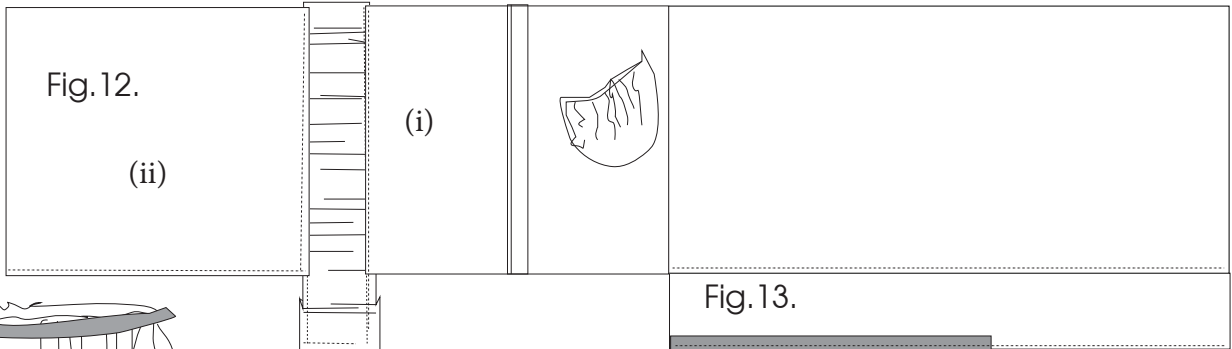


Fig.12.

(ii)

(i)



Fig.13.

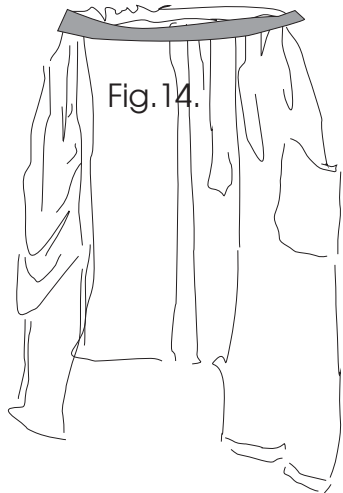


Fig.14.

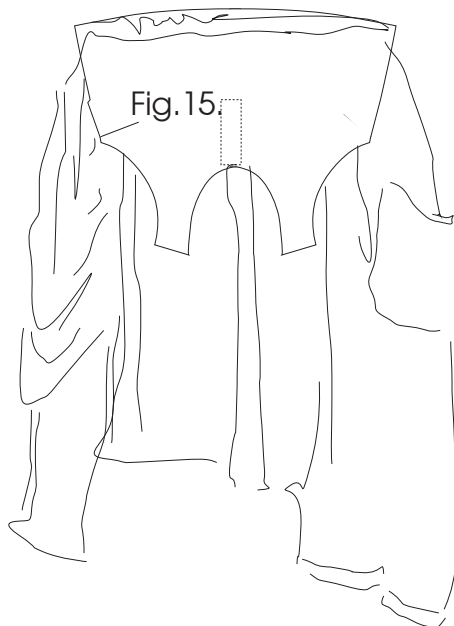


Fig.15.

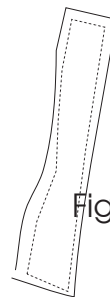


Fig.16.

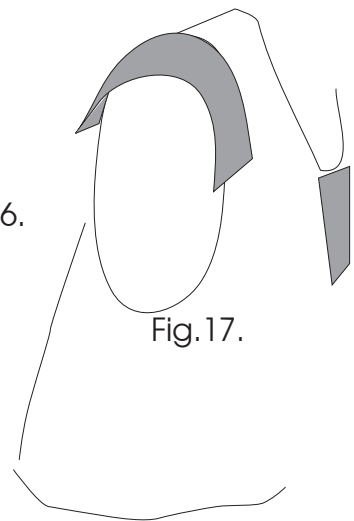


Fig.17.

# *Sewing Instructions*

NOTE: ALL SEAMS ARE 3/8"  
UNLESS OTHERWISE STATED!

- Place the rectangle in the velvet (fabric 3) centered onto the front bodice as shown in fig.1. Zigzag stitch in place. Stitch the side darts. press.
- Make the ruffle in the fabric 4 - by folding in half lengthwise as shown in fig.2. Ruffle along the raw edges, as shown, and pin onto the bodice front as shown in fig.3. Centered.
- Place the back bodice and front bodice together right sides facing, match shoulder seams. Stitch, see fig.4. Also stitch side seams.
- Fig.5. Fold the 1" wide bias strip in half lengthwise as shown, and press. Tuck in short ends, press.
- Place onto one of the pocket pieces as shown in fig.6. This should not go all the way around the pocket edge, just as a decorative trim. Stitch to secure.
- Place the second pocket piece onto the first, right sides facing. Stitch pocket panels together, leaving 2" opening across the top edge of the pocket. Turn and press flat. Stitch across the top edge, and pleat across the top edge to measure 6" or 15cm across. Set pocket aside.
- Bind the neckline of the dress using the 2" wide bias binding. If not enough length join two pieces together and just be careful where your seams end. You don't want one center front...
- See fig.8. Place binding onto raw edge of neckline and pin along. Join ends and clip excess of binding. Stitch binding onto dress. Turn and press, stitch down, see fig.8.
- Zigzag armholes of the dress 1/4" from the raw edge.
- Take one of the skirt panels measuring 24" (61cm) by the width of the fabric and cut it into two as in fig.9.
- Fold the 2" wide strip you precut in half lengthwise, right sides facing outward, and press.
- Pin this centered down the right side of the fabric of the panel -- see fig.10. Stitch using zigzag stitch. as shown. Take the 8" (or 20cm) wide strip and pleat it as shown in fig.11. Make 1" pleats up each side as shown, the length when pleated should equal 34" or 86cm. Add this to the first panel, right sides facing, stitch, see fig.12. Add the other skirt panel (ii) onto the skirt, see fig.12.
- Using the largest skirt panel as shown in fig.13. Stitch the 6" strip onto the hem edge, right sides together, then top stitch as shown in fig.13. Fold the 2" wide strip from fabric 2 in half lengthwise, press. Add this onto the hem edge as shown in fig.13.
- Pin the pocket in place as shown in fig.13. Stitch in place.
- Join the two side ends together to form a tube for the skirt; then pleat along the top edge as shown. We pleated randomly and at intervals, see fig.14. The skirt top should measure the same as the bodice bottom edge.
- Using the 3" strip from fabric 2, again press in half lengthwise, tuck in the side edges. Pin this around the top edge of the skirt on the right side of the fabric, raw edges to raw edges, see fig.14. Overlap where you began and continue. Baste stitch in place.
- Turn skirt inside out, and place bodice inside, matching waist edge to skirt, fig.15. Right sides together. Pin bodice to skirt. Stitch in place.
- Zigzag hem edge 1/4" from raw edge all the way around all hem pieces.
- Prepare the shoulder panels you precut from fabric 2. Zigzag around the edges 1/4" from the edge. Pin both in place as shown in fig.17 across the shoulder. The piece should flap over the armhole edge. Zigzag in place.