



tina givens™

SIZING
 XS...2
 S...4-6
 M... 8-10
 L...12-14
 XL ... 16-18
 2X...20-22
 3X... 24-28



WWW.SEWTINAGIVENS.COM

tina givens™

TGP-A7013

darling

DRESS

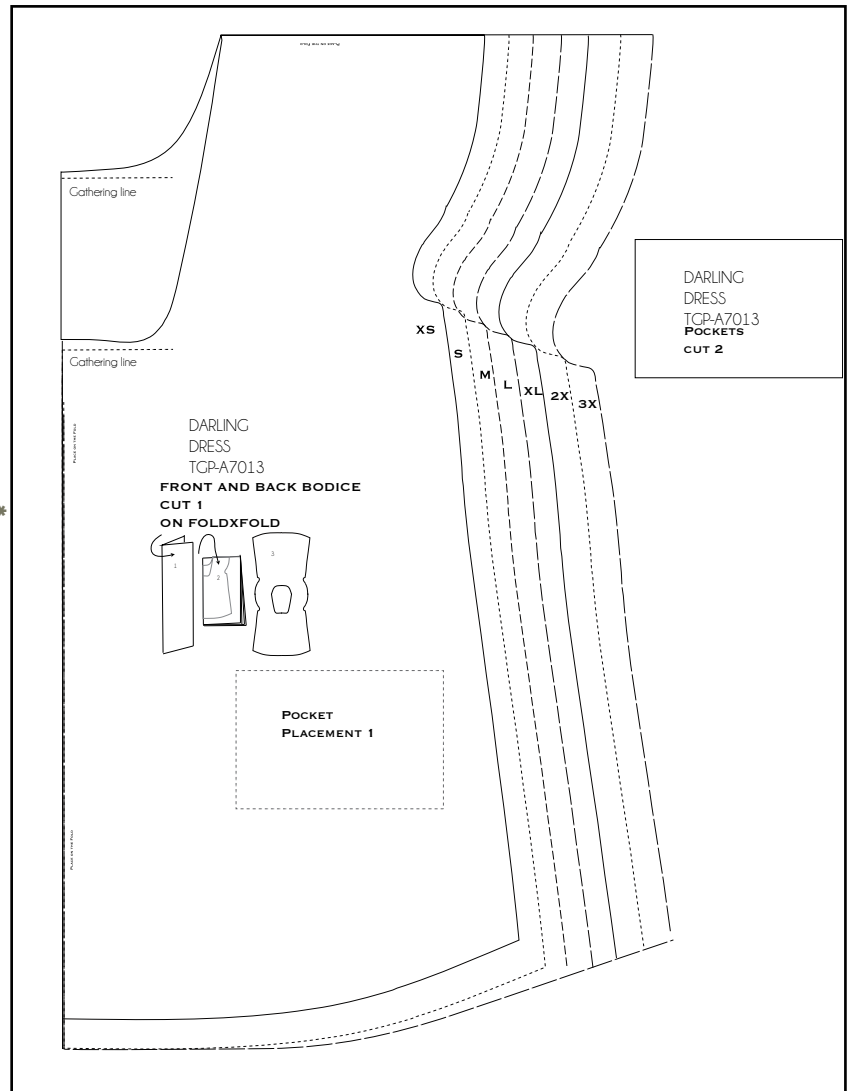
FABRIC REQUIREMENTS

We love this dress as a gauzy raw linen or raw woven silk!
 + a solid light to medium weight for pockets and trim.

FOR ALL SIZES

	44" w	54" w fabric *
Fabric 1:	3-2/3 yds	3 yards
Fabric 2:	1/4 yard	1/8 yard
	+ 4 small buttons	

YOU HAVE DOWNLOADED this perfect sewing pattern by Tina Givens Design for personal purposes. No part of this pattern should be duplicated or reproduced for any reason. We want you to create this garment for your own personal use. Do not share this sewing pattern with others. This is the honor code of Sew Tina Givens and Tina Givens Design.



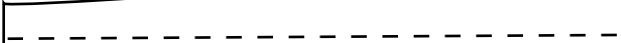
All designs and art © Tina Givens. No part of this product may be reproduced in any form. "All designs, art, photography and images are protected by federal copyright law. Designs are not to be reproduced for commercial sale. All rights are reserved.

WWW.SEWTINAGIVENS.COM
 QUESTIONS 919.848.9400
 OR EMAIL US AT INFO@TINAGIVENS.COM

1A

1B

FOLD



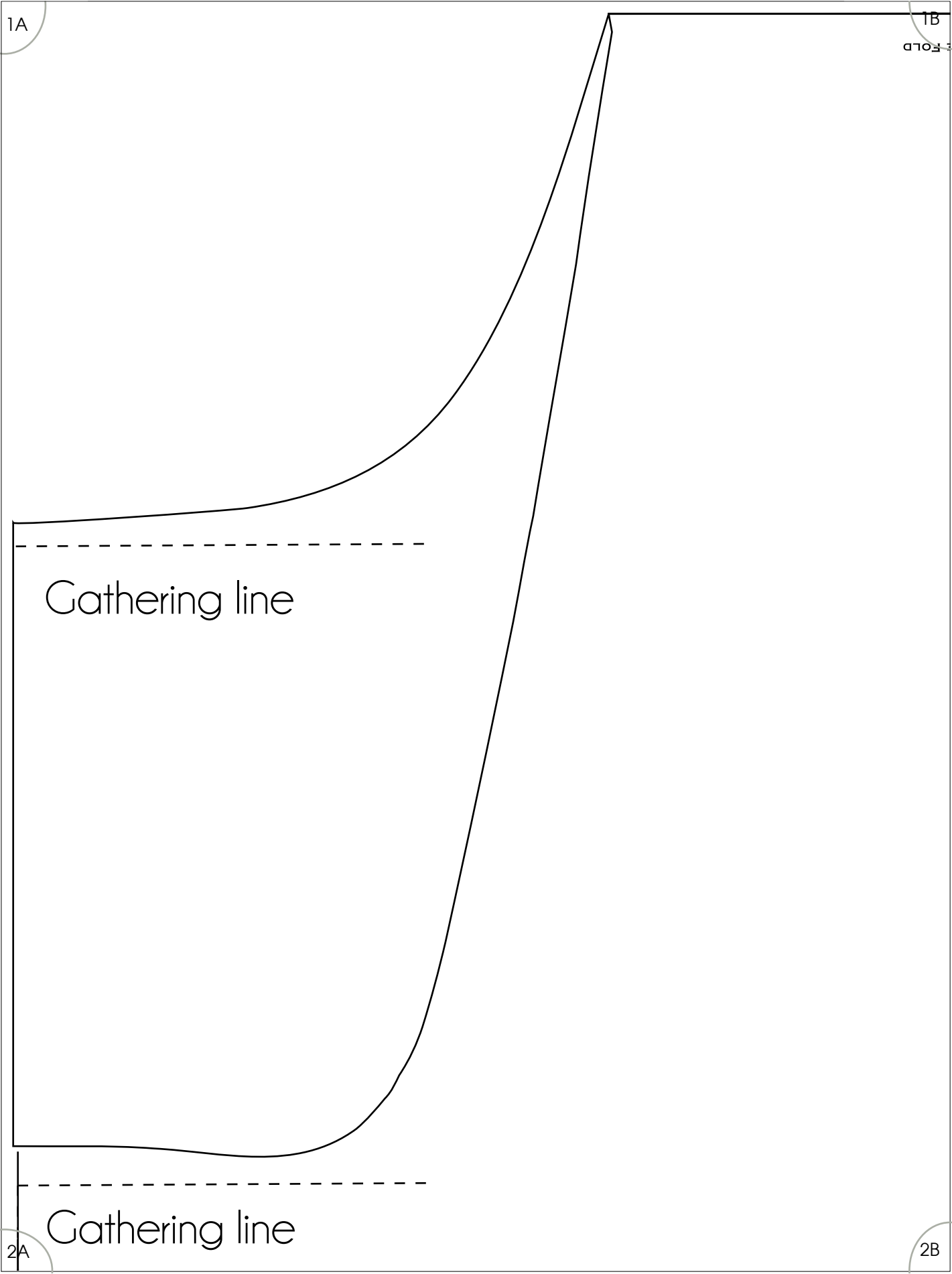
Gathering line



Gathering line

2A

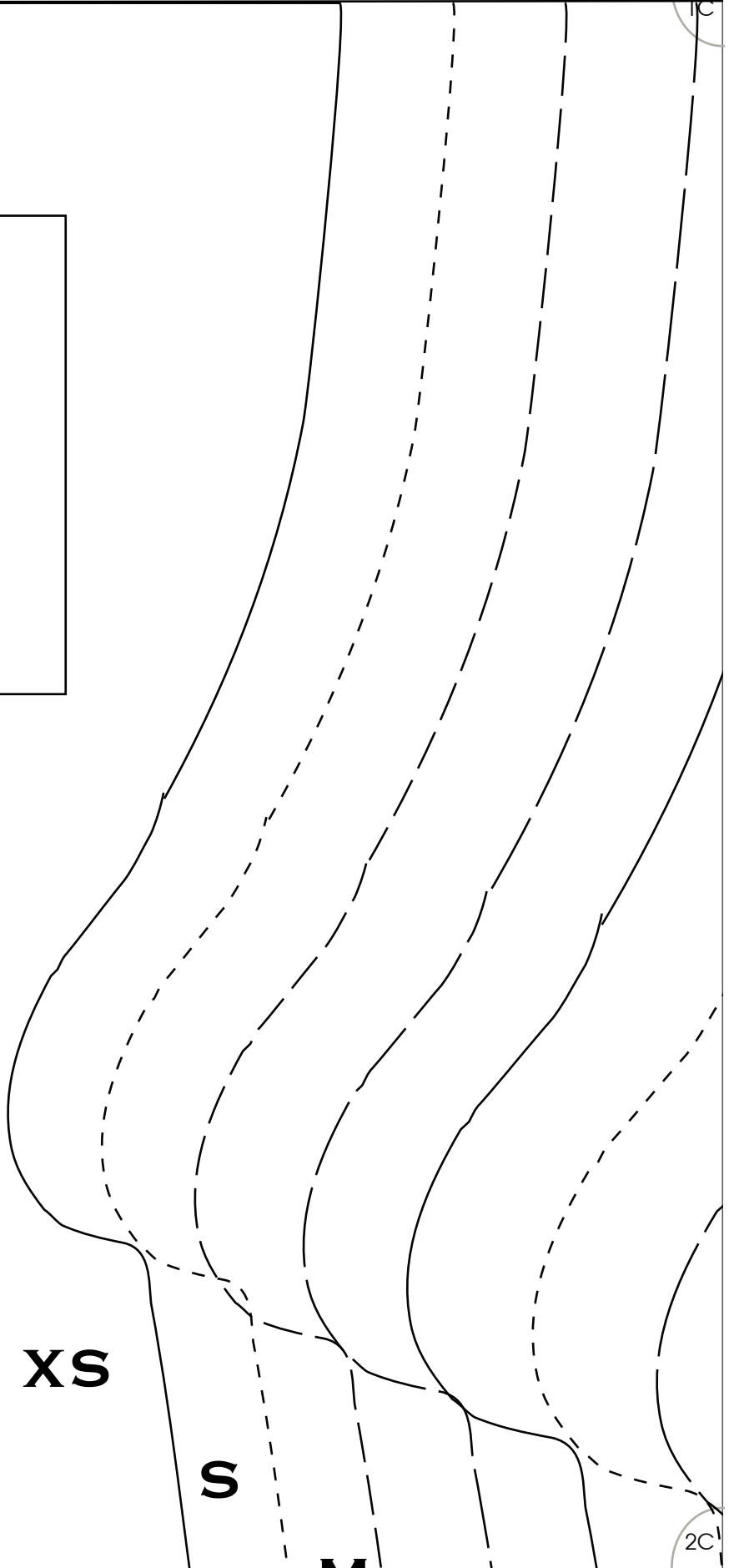
2B



1B

PLACE ON THE

1C



XS

S

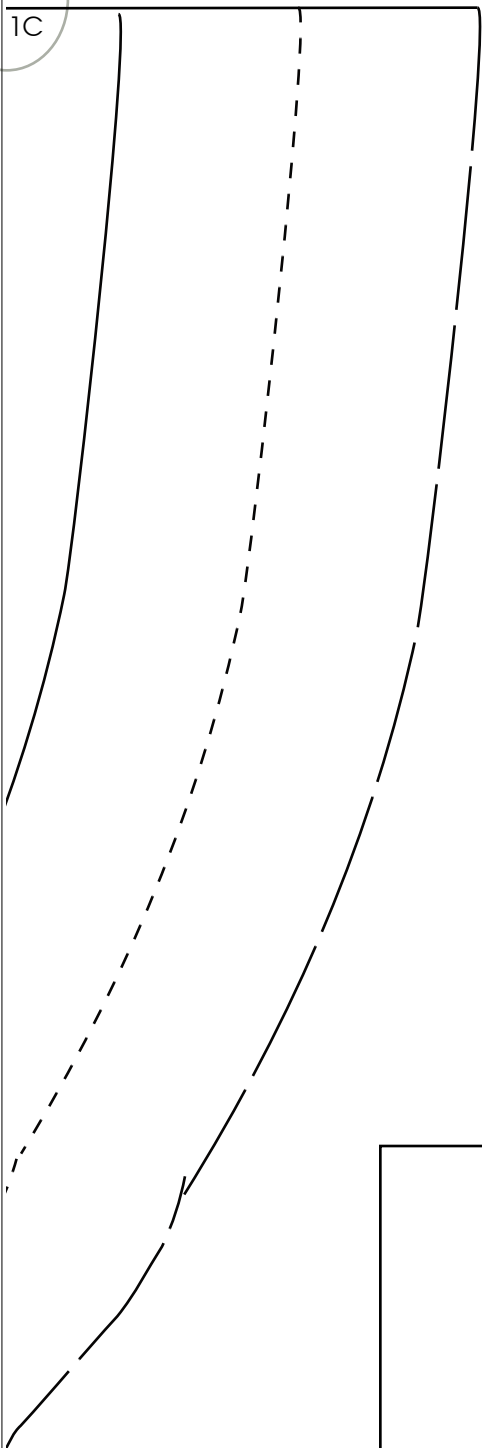
M

2B

2C

1C

1D



2C

2D

DARLING
DRESS
TGP-A7013
POCKETS
CUT 2

1D

1E



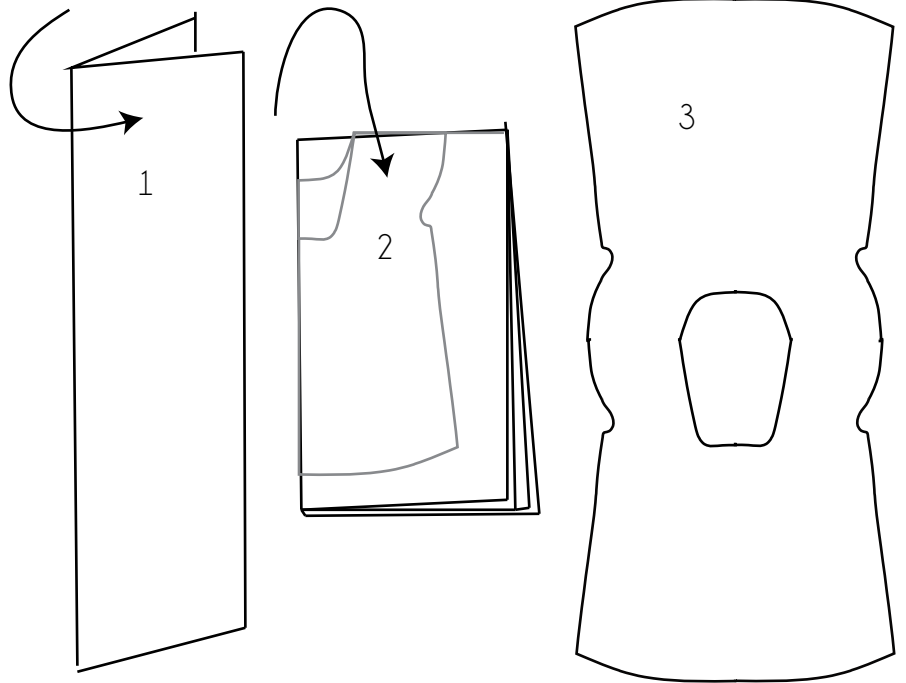
2D

2E

PLACE ON THE FOLD

DARLING DRESS TGP-A7013

FRONT AND BACK B CUT 1 ON FOLDX FOLD



2B

2C

M

L

XL

2X

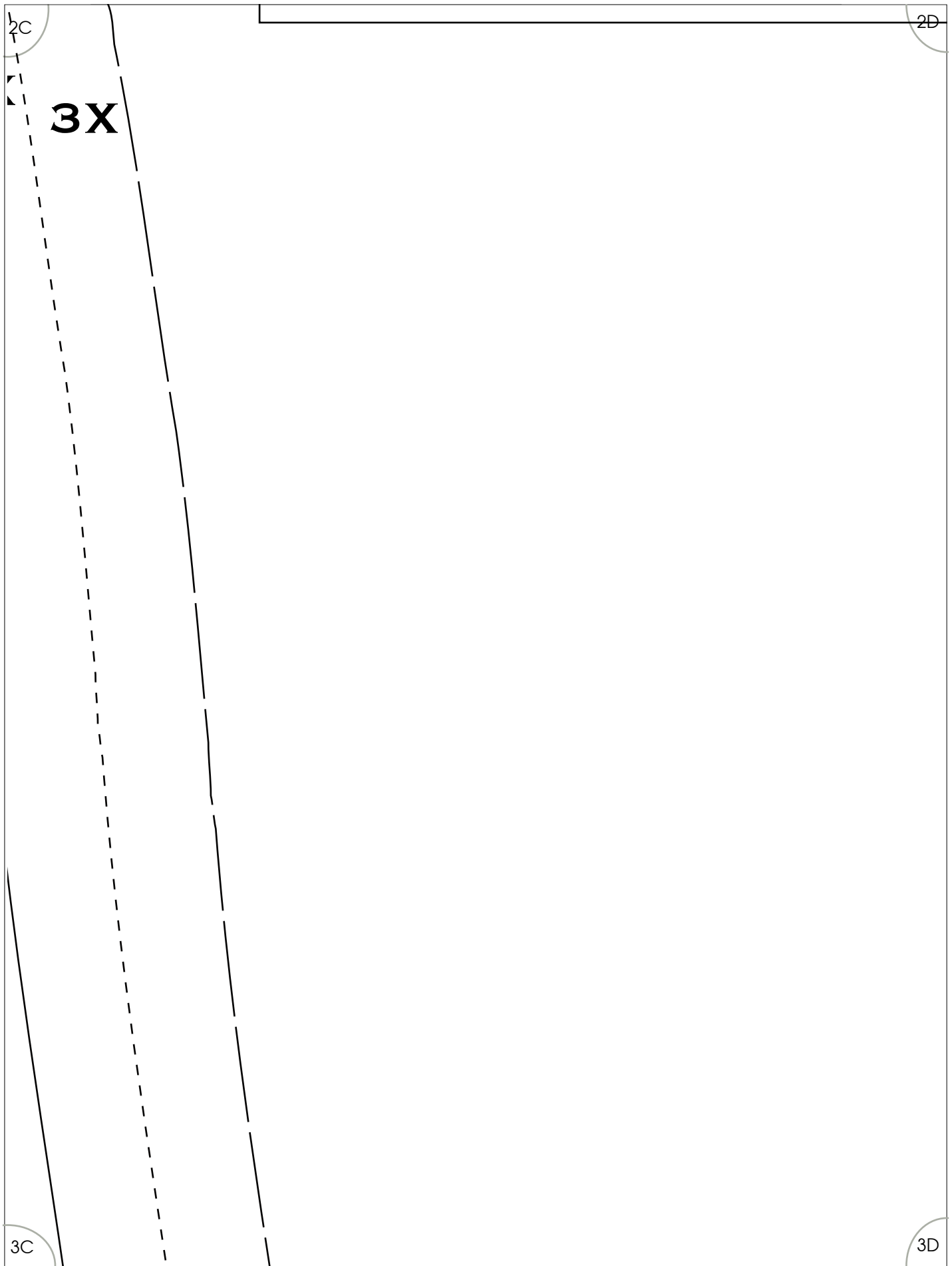
ODICE



3B

3C

ZET



2D

2E

3D

3E

3A

FOUR
3B

PLAC

PLACE ON THE FOLD

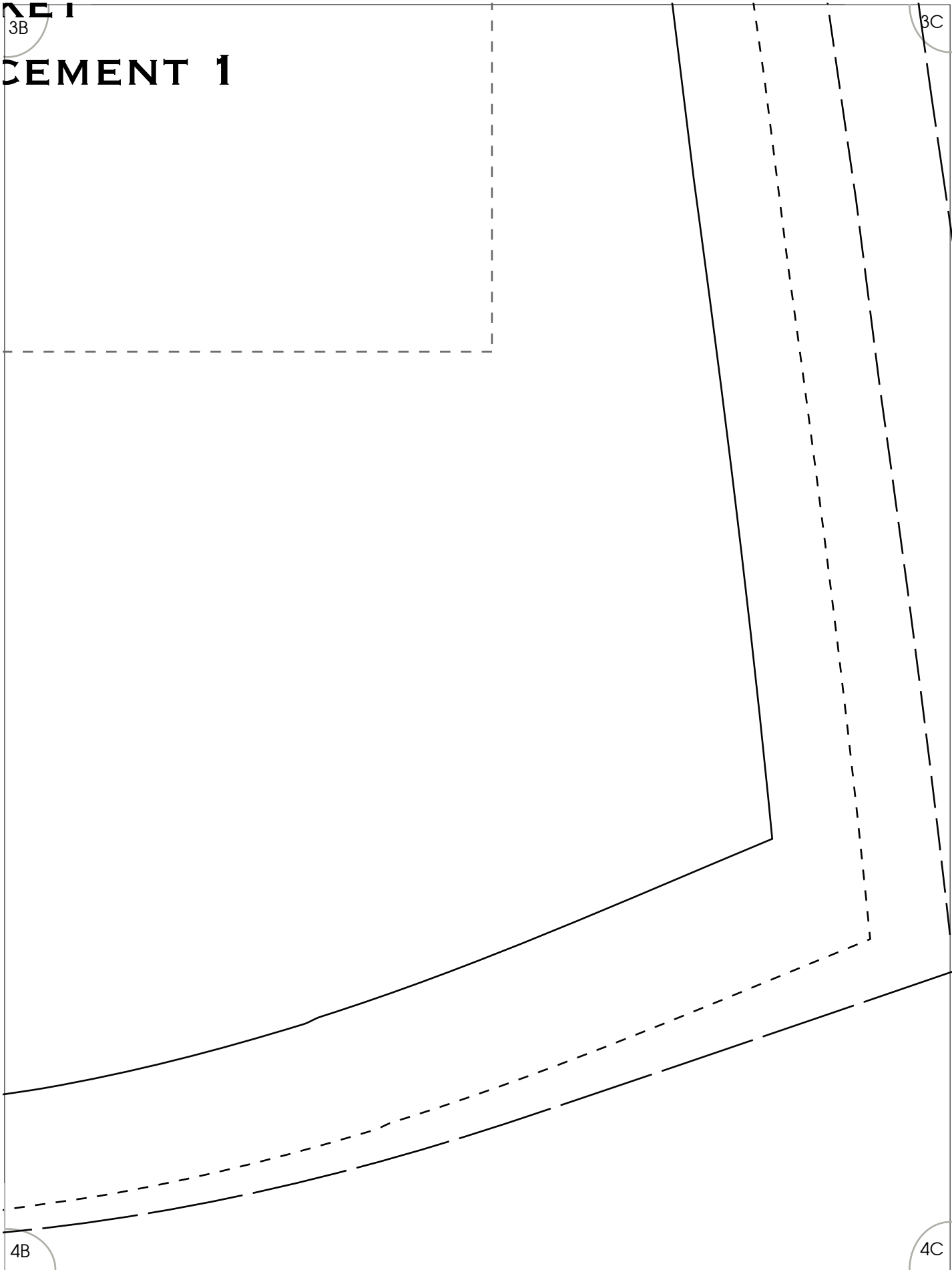
4A

4B

NE 1
3B

CEMENT 1

3C



4B

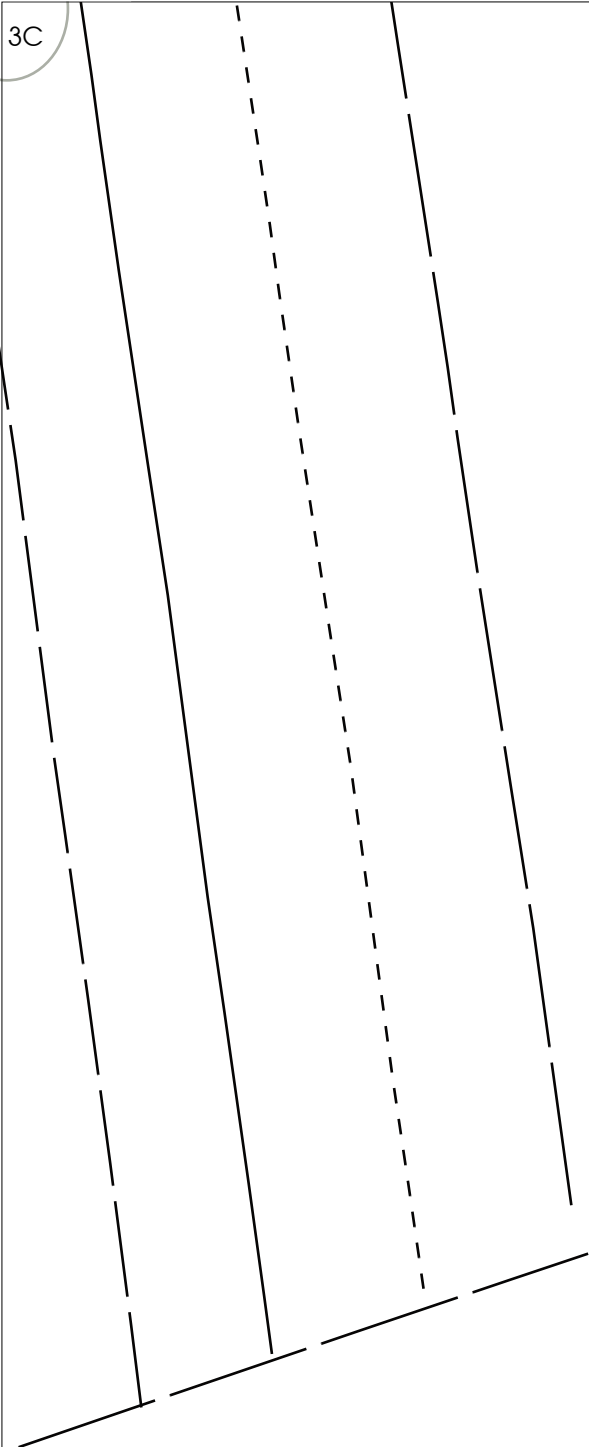
4C

3C

3D

4C

4D



darling

DRESS

STYLISH COMFORT
WWW.SEWTINAGIVENS.COM



FABRIC REQUIREMENTS

We love this dress as a gauzy raw linen or raw woven silk!
+ a solid light to medium weight for pockets and trim.

FOR ALL SIZES

	44" w	54" w fabric *
Fabric 1:	3-2/3 yds	3 yards
Fabric 2:	1/4 yard	1/8 yard
+ 4 small buttons		

SIZING

XS...2
S...4-6
M.... 8-10
L....12-14
XL ... 16-18
2X...20-22
3X... 24-28

Cutting Instructions

- First cut the skirt panels, if using 54" wide fabric cut two panels 24" wide, by the width of the fabric (so two panels 24"x54"w); and if using 44" wide fabric cut three panels 24" by the width of the fabric.
- With the remaining fabric fold, in half lengthwise (see the pattern piece for diagram); then fold the fabric again so you have four layers of fabrics and folds as shown.
- Lay the pattern on the fabric as shown. Cut the neck front and back carefully; cut the outline of the bodice.
- Cut 4 ties 1.5" wide by 26".
- From fabric 2, cut the two pocket pieces and two strips the width of the fabric 1" wide.

Sewing Instructions

NOTE: ALL SEAMS ARE 3/8"
UNLESS OTHERWISE STATED!

- Refer to the diagrams on the next page. See fig. 1. This is what your bodice should look like once cut.
- Run a gathering stitch along the marked line (noted on the pattern piece) along the front neckline and back neckline. Gather these up to equal about 4" across the marked line.
- Baste in place.
- Prepare the two pockets by zigzagging across the top edge of the pockets, 1/4" from the top edge.
- Pin them in place, refer to fig.2. for placement. Stitch both in place.

I can't take how sweet this dress is... Love this piece all year long. we feature it in 100% gauze or open weave silk or LINEN.

Plus a solid light to medium weight for pockets and trim. It's sublime, whimsical and lovely with it's eccentric ties!

Pattern Preparation

SIMPLY PRINT OUT THIS PDF DOWNLOAD PATTERN ON LETTER SIZE PAPER (8.5x11 IN US OR EURO SIZE)

Tape all the join lines together. It's that simple.

For more info see instructions online at www.sewtinagivens.com

ONCE ALL TAPED TOGETHER SELECT THE SIZE YOU WISH TO MAKE, SEE OUR SIZE CHART AND CUT OUT YOUR PAPER PATTERN PIECES.

TIPS: PRINT OUT IN DRAFT MODE TO SAVE INK, 100% DO NOT SHRINK DOCUMENT, AND MAKE SURE TO MEASURE THE 3" SQUARE TO ENSURE SCALE IS CORRECT.

- Refer to diagrams 3 and 4 - french seam the sides of the bodice. To do this place the dress right side out, pin the sides and stitch a narrow seam allowance 1/4". Then turn the bodice inside out and pin the sides again. This time stitch using 3/8" seam allowance. This makes for a neat seam and more secure if using a gauzy fabric like we did.
- Stitch the skirt panels together using the same french seam technique. Either stitch 3 panels if using 44" wide fabric or 2 panels if using 54" wide. See fig.6.
- Using a gathering stitch gather up the top edge of the skirt as in fig.7. The skirt should measure the width of the bottom edge of the bodice, see fig.11.
- Zigzag or serge the bottom hem edge of the bodice to finish the raw edge.
- Pin the skirt panel onto the front side of the bodice as in fig.11. Pin along the stitch gather line and this should be 1" above the hem edge of the bodice. Stitch skirt on along the gather line through all layers.
- Using the two 1" wide strips you precut from fabric 2, fold both in half lengthwise and press. (Right sides facing outward.)
- Pin one in place over the stitch line you just stitched. Along the skirt top edge. Stitch in place. See fig.11.
- Using the remaining strip, place onto the neckline of your dress 1/2" from the edge as in fig.8. on the right side of the fabric and stitch in place (overlapping at back center).
- Make 4 ties as in fig.9. by folding the strips onto their wrong side along the long sides, then fold the strip again in half. Stitch down it's center.
- Pin these in place as shown in fig.12 on both the front and the back at the skirt tops.

darling

DRESS

- Refer to fig.7 and note the two X's . This is where you will gather up the fabric, simply make two 1" pleats as in fig.10. Stitch to secure. The pleats do not have to be perfect, just enough to raise up your skirt hem.
- On the inside of these pleats and stitch line (inside the skirt, sew a little button.)
- The ties can be left to hang or loop the tie at the end to form a button loop.
- Loop the ties and connect them to their buttons.
- Finish off the cap sleeves and hemline by simply running a zigzag line 1/4" from the raw edge.
- Garment wash on a gentle cycle and run through a warm dryer.
- Trim off excess threads.
- Throw it on and go.

