

1A

1B

TEST MEASUREMENT BOX
3"x3"
OR
7.62CMX7.62CM

Back neckline

Cut line for neck with flap

Cut line for square neck

2A

2B

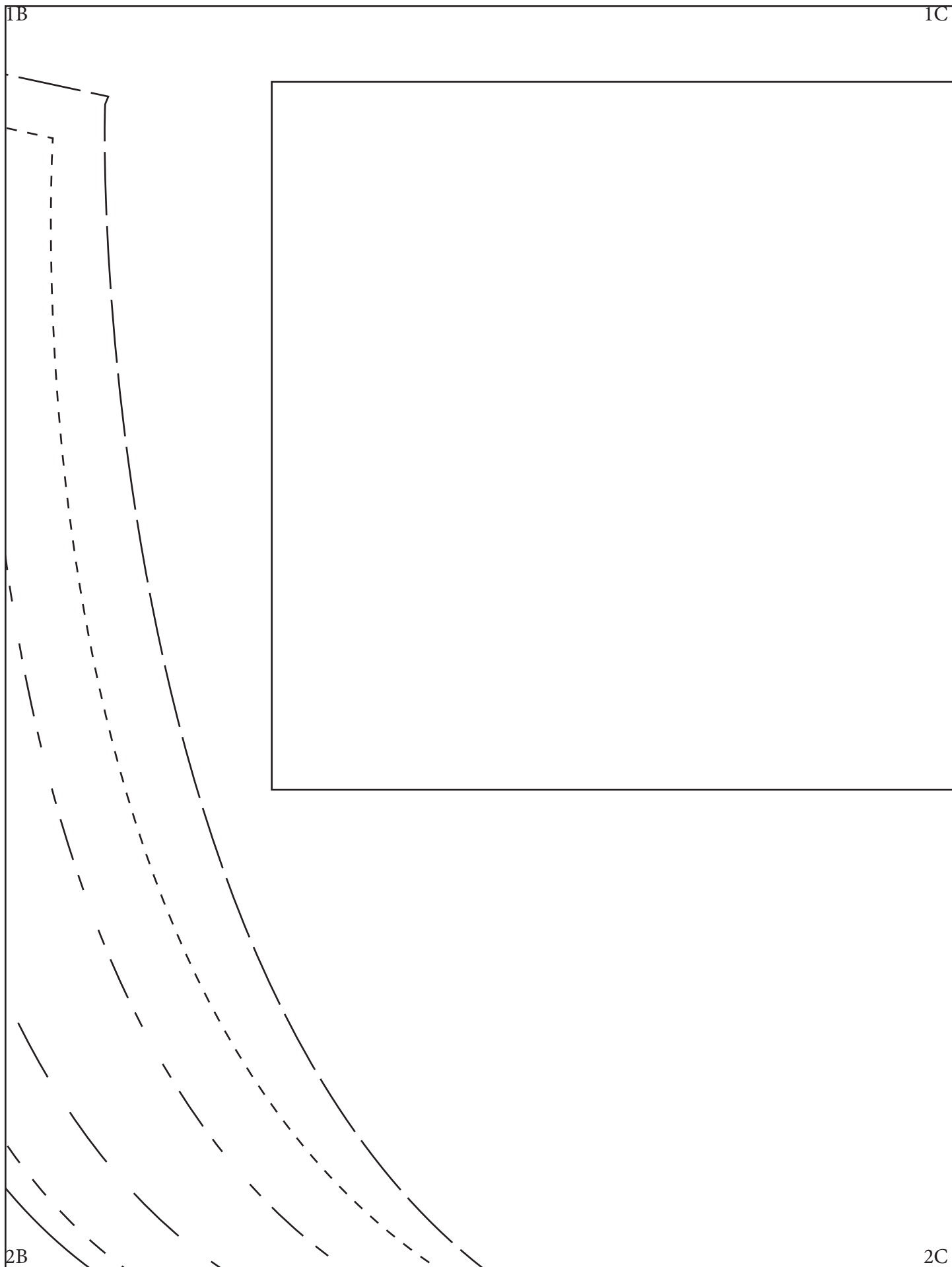
1B

1C

2B

2C

AUDRA 2



AUDRA TUNIC DRESS

TG-A7000

Pocket

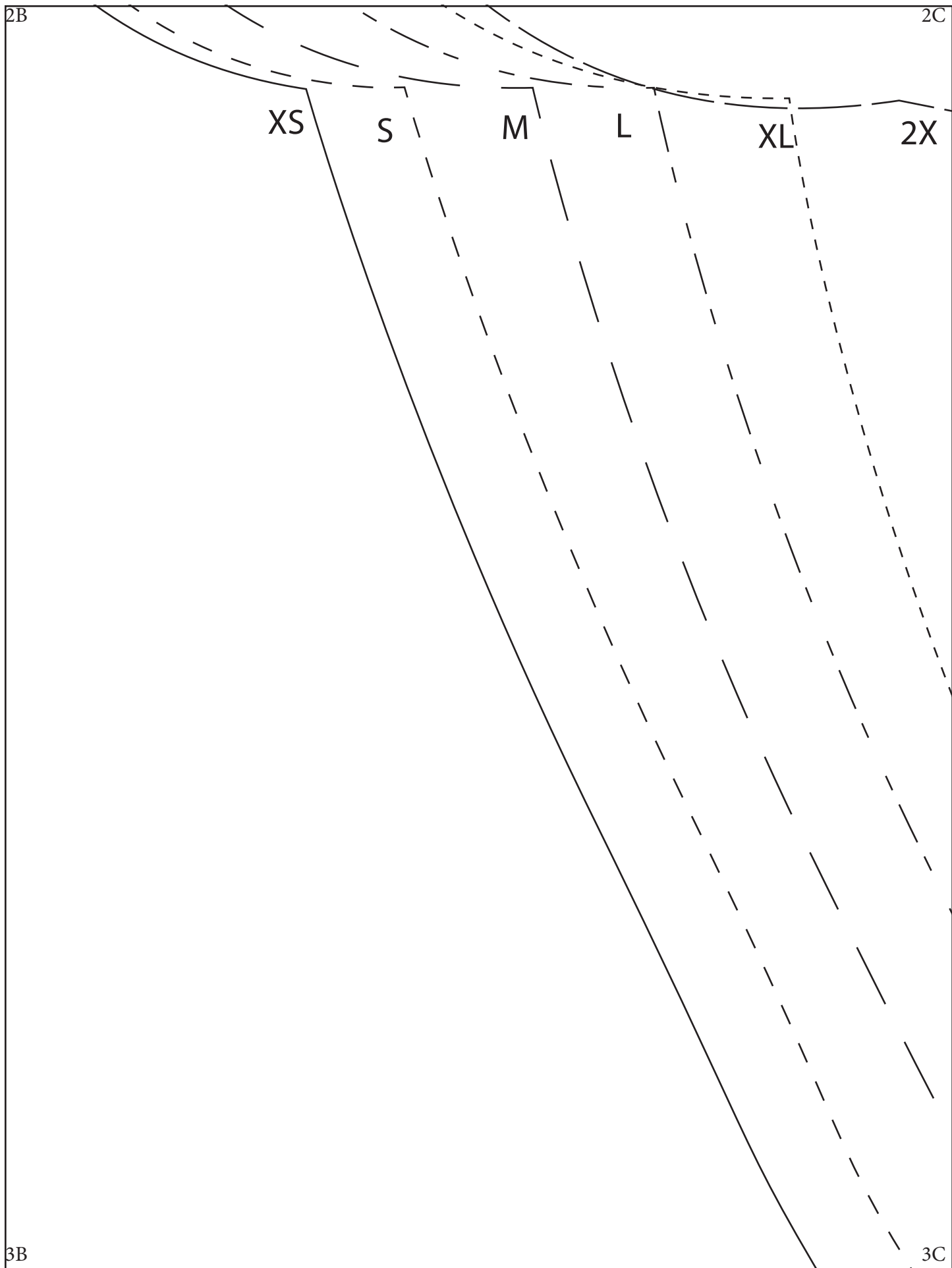
Cut 2 (fabric 1)

PLACE ON FOLD

AUDRA TUNIC DRESS

TG-A7000

Front and Back Bodice
Cut 1 of each on fold
Fabric 1



2C

2D

3C

3D

AUDRA 6

3A

3B

4A

4B

3B

3C

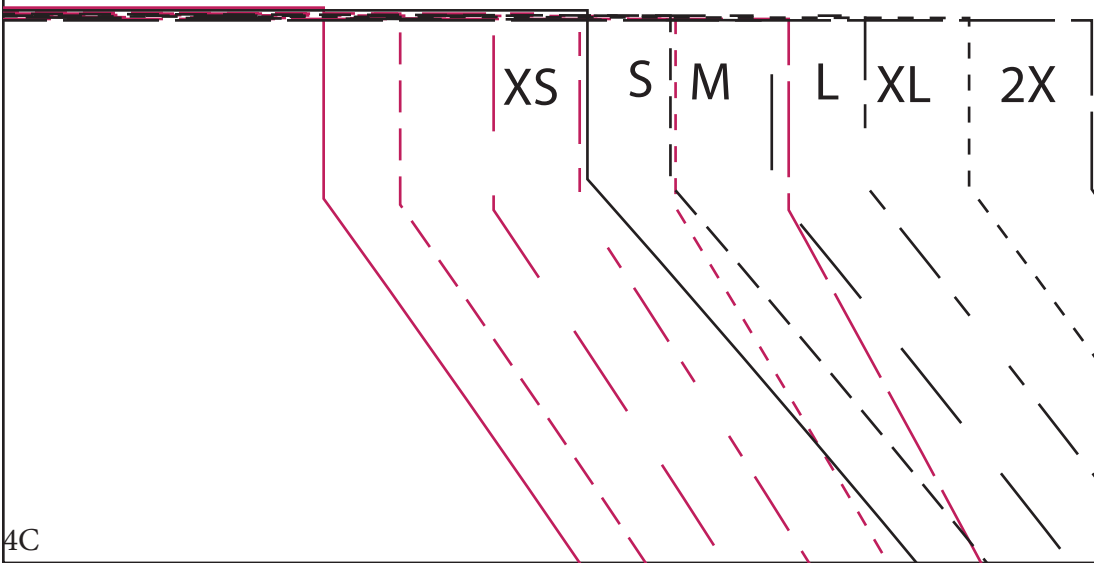
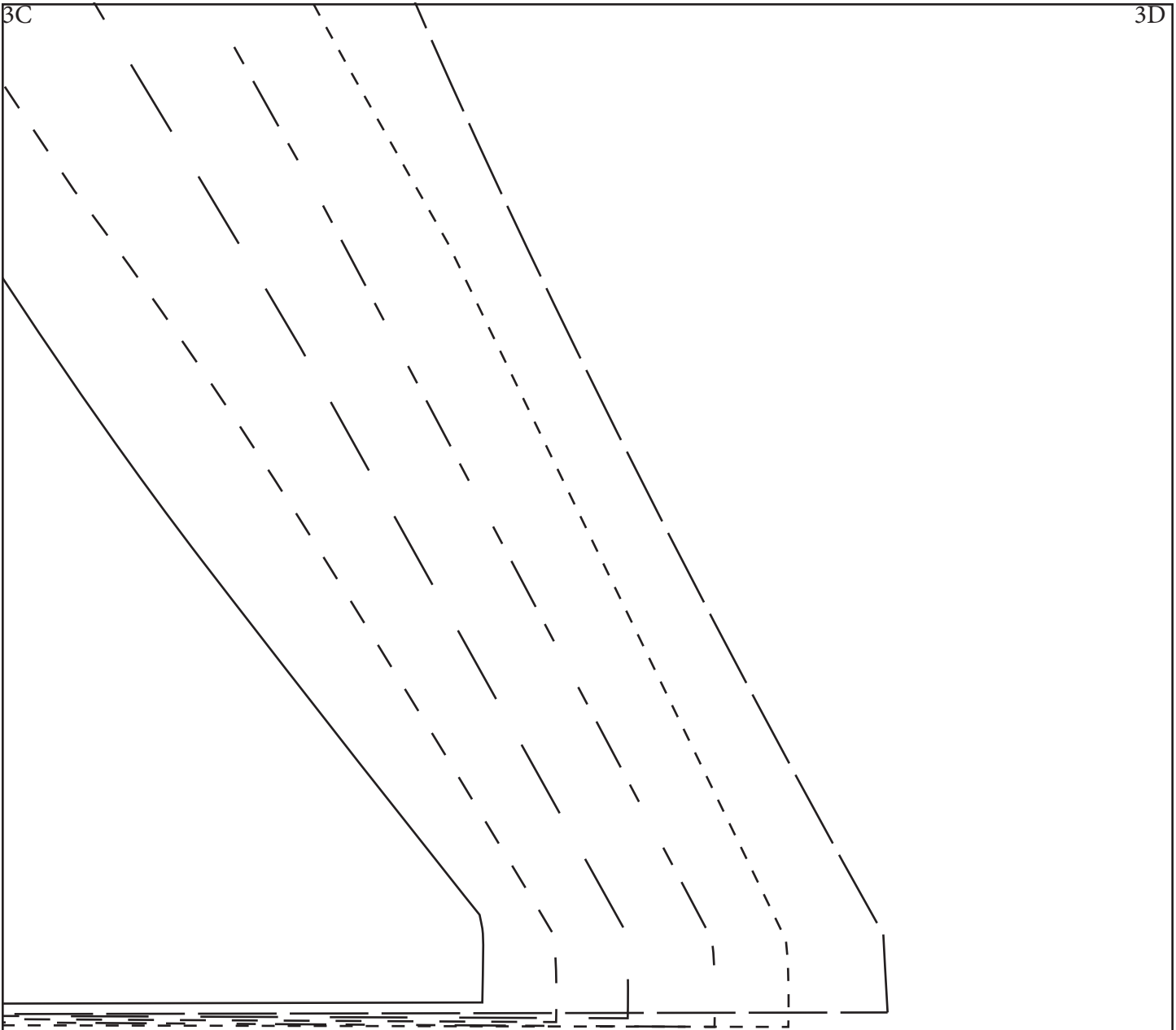
1

4B

4C

3C

3D



4C

4D

4A

4B

PLACE ON FOLD

5A

5B

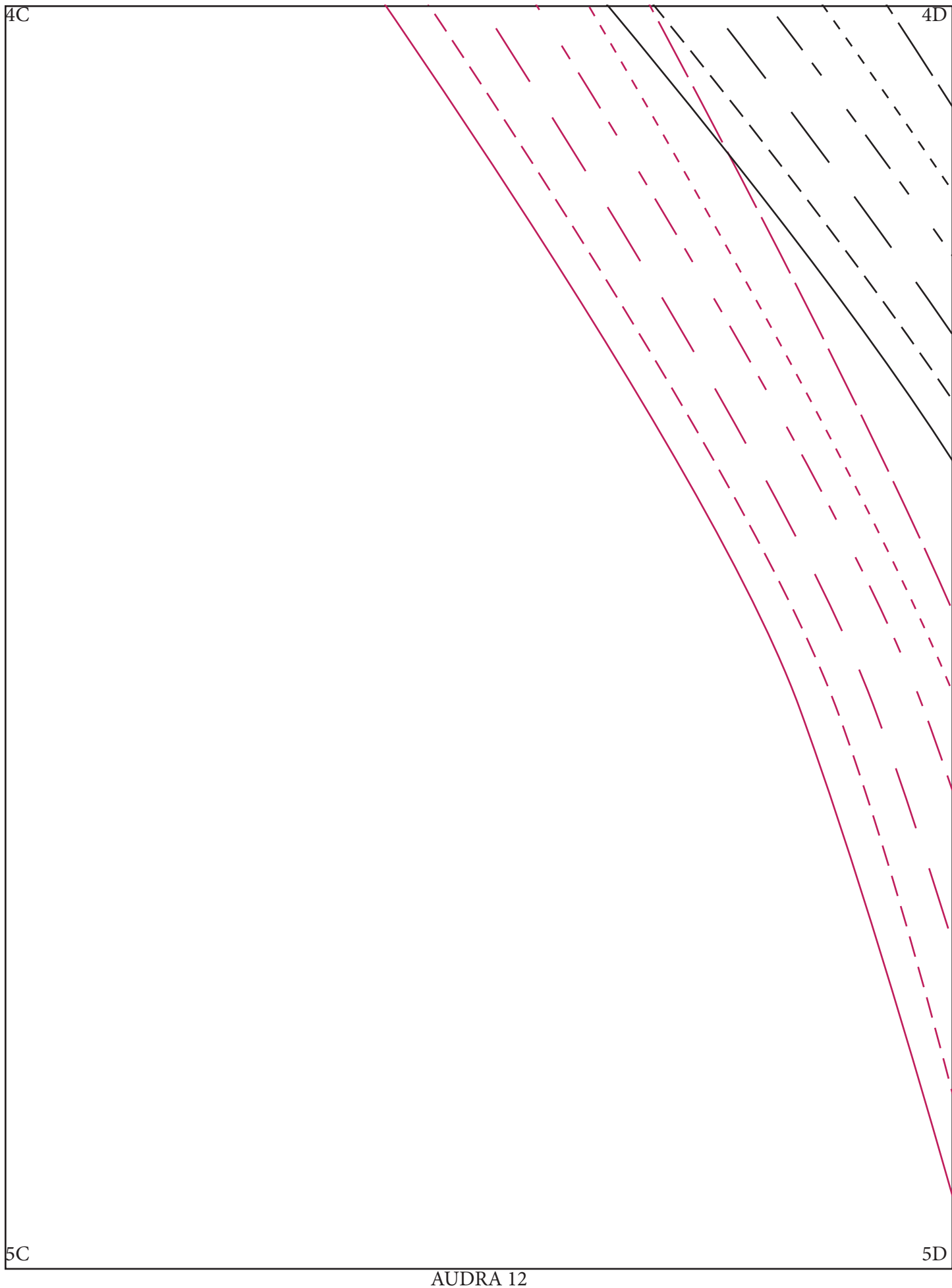
AUDRA TUNIC DRESS

TG-A7000

SKIRT ONE - FABRIC 1 CUT 2 Fabric 1

SKIRT TWO - FABRIC 2 CUT 2

Fabric 2



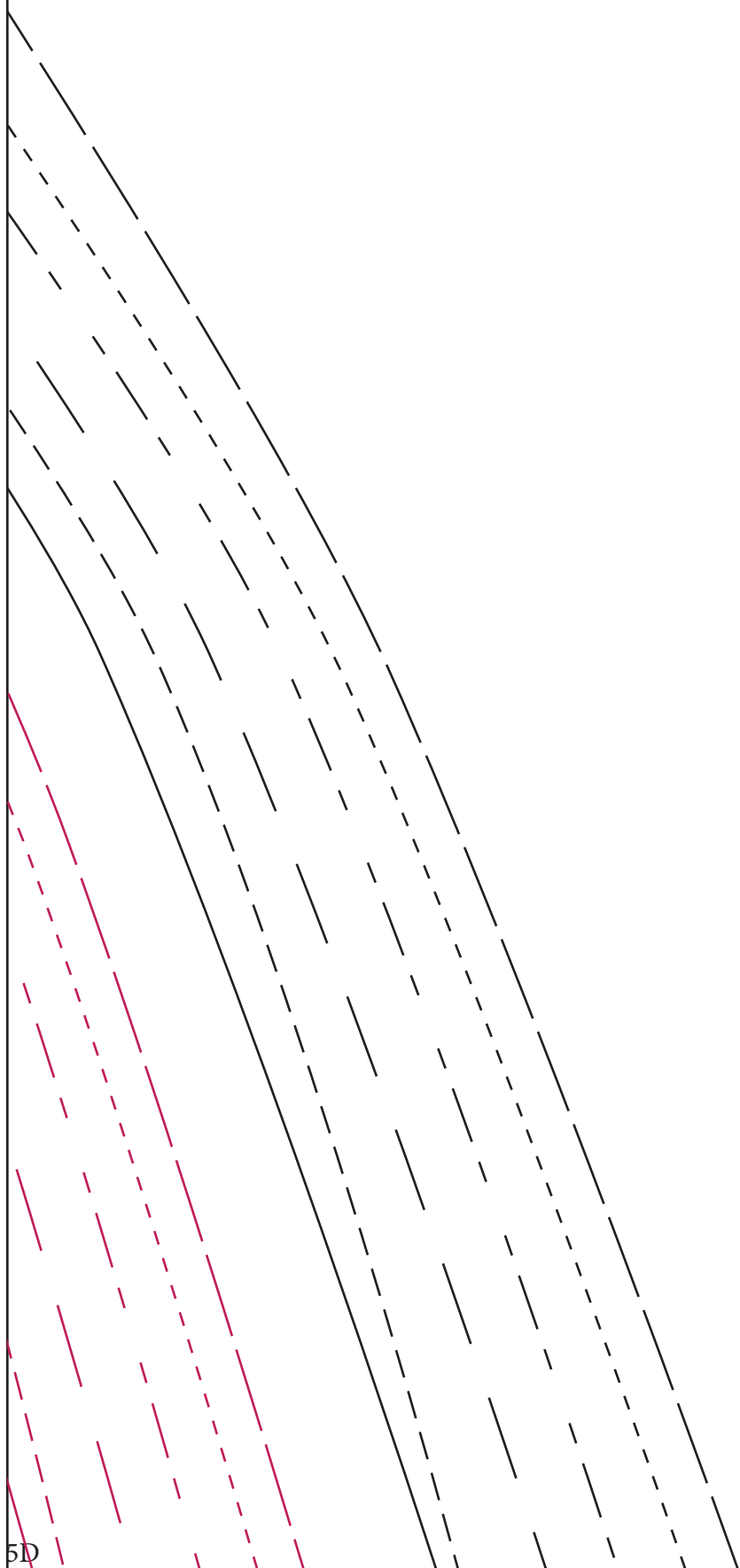
4D

4E

5D

5E

AUDRA 13





AUDRA TUNIC DRESS

TG-A7000

Pocket trim

Cut 1 (Fabric 2)

5B

5C

CUT LINE FOR SKIRT 1



CUT LINE FOR SKIRT 2



6B

6C

5C

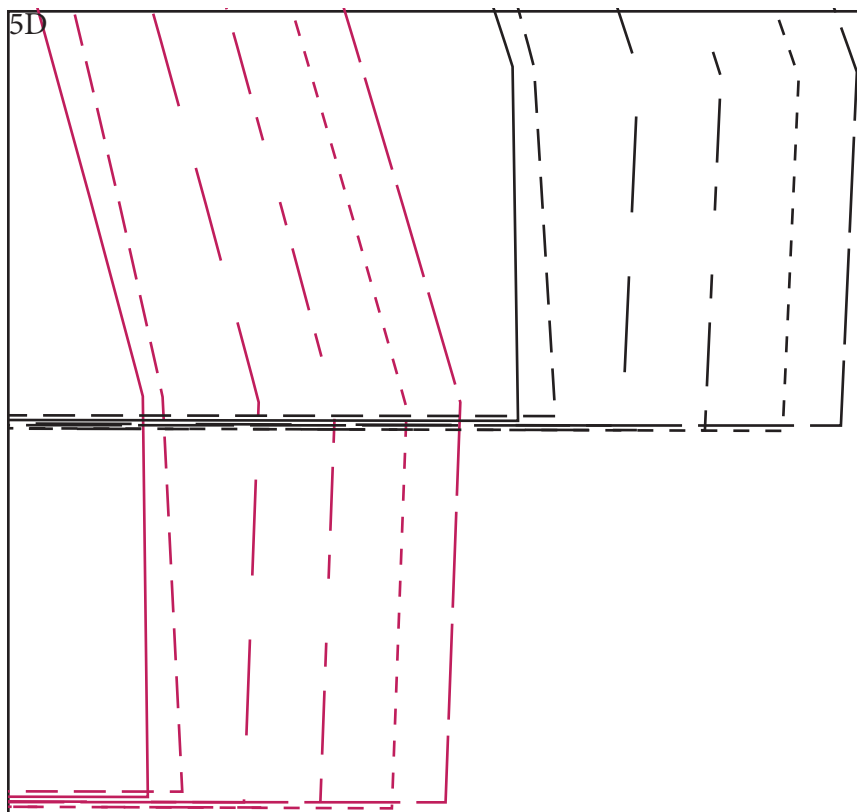
5D

6C

6D

5D

5E



6D

6E

tina givens™
TG-A7000
AUDRA tunic

AUDRA IS A DRAMATIC TUNIC WITH EASY POCKET

Love this in both linen or a cotton print. Use a voile or linen gauze for the underskirt. You're going to love it!

...SIZES...

XS 2 / UK 4-6 / EURO 34
S 4-6 / UK 8-10 / 36-38
M 8-10 / 12-14 / 40-42
XL 16-18 / 20-22 / 48-50
2X 20-22 / UK 24-26 / 52-54

Materials

YARDAGE SAME FOR ALL 3 SIZES, SML

WIDTH OF FABRIC 44"W 54"W

all sizes

FABRIC 1 3-1/8 YARDS 2-1/3 YARDS

FABRIC 2 2 YARDS 1-1/2 YARDS

PLUS ONE MEDIUM TO LARGE BUTTON

TAPE • SCISSORS • THREAD • HAND SEW NEEDLE • SEWING MACHINE

• PINS •

WWW.TINAGIVENS.COM

ALL DESIGNS AND ART © TINA GIVENS. NO PART OF THIS PRODUCT
MAY BE REPRODUCED IN ANY FORM. "ALL DESIGNS, ART, PHOTOGRAPHY
AND IMAGES ARE PROTECTED BY FEDERAL COPYRIGHT LAW. DESIGNS
ARE NOT TO BE REPRODUCED FOR COMMERCIAL SALE. ALL RIGHTS ARE
RESERVED.

Cutting & Preparation

PATTERN PREPARATION

Print out the first page of this document, Check the test box for accuracy, then continue to print all pages. Keep the instruction pages together; and tape the pattern pages together beginning with row #1, then onto #2. Then tape the rows together.

+ REFER TO THE DIAGRAM BELOW FOR CUTTING LAYOUTS

Place the bodice pattern along the fold of the fabric as shown, cut out the front. Lay the bodice piece on fold again but cut the back (difference is the neckline). Cut the skirt #1 on the fold as shown for 54" wide fabric, and as shown for 44" wide fabric.

Cut the pocket piece in fabric 1. In fabric 2 cut the 2nd skirt as shown and 3 bias cut strips as shown for binding neckline and armholes. You also need the pocket trim piece and one button loop approximately 5" x 1". Also cut a 5" square for the back patch applique in a contrasting fabric or fabric 2.

You can choose to cut the neckline with the flap, or to cut a square neck.



sewing *Instructions*

A NOTE ON RAW EDGES

- Our Audra tunic celebrates raw edges no matter what the fabric you choose, cotton or linen. We simply zigzag or run a decorative stitch along the raw edges so the garment maintains it's shape and prevents over fraying. We'll detail this in the instructions.

+ FIG. 1. SKIRTS

Using a zigzag stitch, stitch around the edges of the #2 skirt panels (under skirts). Stitch 1/4" from the raw edge.

- Place one of your underskirts with one of your #1 skirt panels (upper skirt, which is shorter than the underskirt). Right sides facing the same way. And match the top edge. Baste stitch together as in fig.1. Repeat for the other skirt panels.

- + **FIG. 2 POCKET PREP** Fold the pocket trim as in fig.2. right sides facing and stitch sides together as shown. Clip corners and turn the trim right side out. Press flat.

- Make the button loop by folding this piece to tuck in raw edges and stitch down the middle, press. Fold this loop in half and pin centered onto the right side of one of the pocket pieces, fig.2. Place the folded and sewn pocket trim onto the right side of the pocket over the loop as shown. Raw edges of the trim should lay with raw edge of the pocket. Baste in place through all layers.

- + **FIG.3-4 POCKET PLACEMENT** Place the pocket piece without the trim, in place on the bodice front as shown in fig.3. Right sides facing, stitch across in place.

- Repeat with the second pocket piece (with the trim and button loop). Place this on the skirt panel to match the placement of the bodice as shown in fig.4. Stitch in place.

- + **FIG. 5 BACK BODICE** Place the back patch (5" square) centered onto the back bodice as shown in fig.5. Stitch in place.

- + **FIG.6 ADDING SKIRT TO BACK** Place the skirt combination piece without the pocket, right sides facing onto the back bodice panel as shown in fig.6. Right sides facing. Stitch together.

**NOTE: ALL SEAMS ARE 5/8”
& INCLUDED IN THE PATTERN PIECES.**

✦ **FIG.7 FRONT**

- Again, right sides together, pin the front skirt combo with the pocket onto the front bodice as shown in fig.7. Matching the pocket edges, pin across and around the pockets. Matching pocket corners. Stitch together pivoting at pocket corners.
- Clip into pocket corners a little being careful not to clip stitches.

✦ **FIG.8. SHOULDERS AND SIDE SEAMS**

- Place the tunic pieces back and front right sides facing, match shoulders and side seams. Pin together. Do not pin the under skirt into the side seam, leave this to hang loose.
- Stitch as shown in fig.8. Press, turn tunic right side out.

✦ **FIG.9-11. BINDING**

- Bind the neckline using the bias strips. Place the raw edge of the bias strip along the front side of the neckline, along the raw edge.
- See fig.9. Follow the neckline, and end at center back. Trim off excess, join ends and pin down. Stitch in place.
- Press the raw edge onto the wrong side of the binding as shown in fig.10 and press.
- Press the seam allowance as shown in fig.11. upward onto the binding. Fold the folded edge over the seam allowance and pin past the seam allowance as shown in fig.11. Stitch in place.
- Repeat for the armholes.

✦ **FINISH**

- Stitch around the hemline of the upper skirt 1/4” from the raw edge. Use a zigzag or decorative stitch.

tina givens™
TC-A7000

